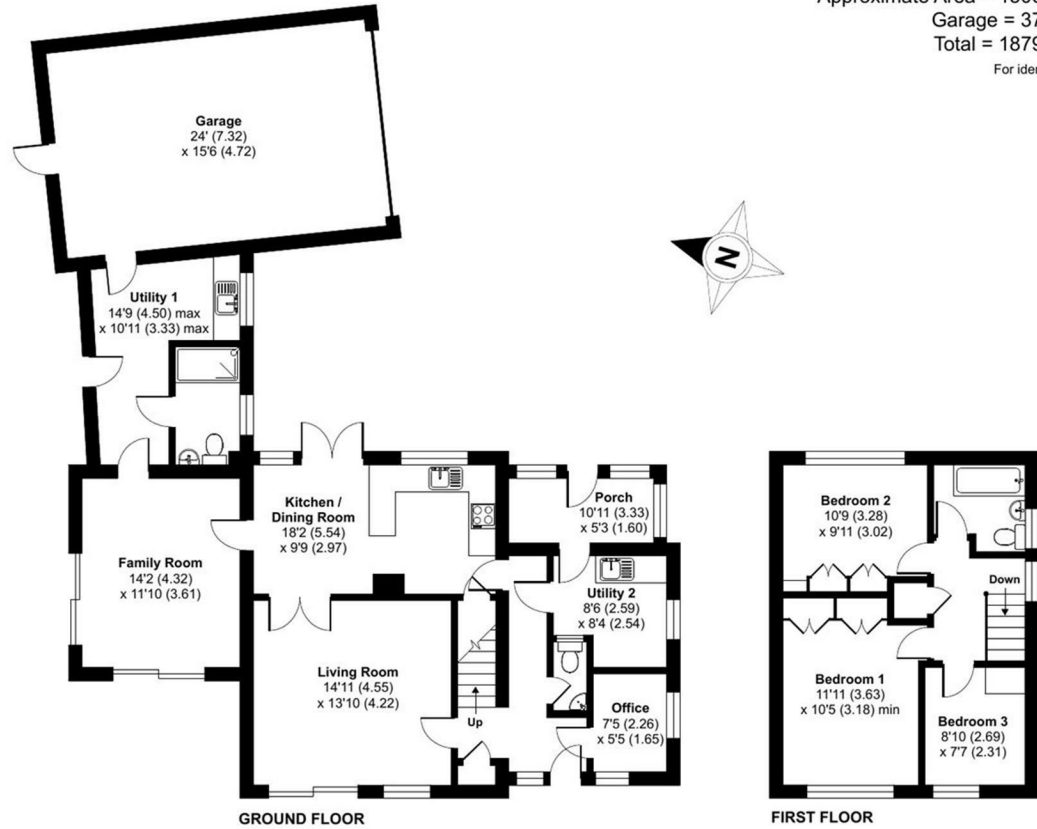


FOR SALE

Silver Chains, Kenley Road, Harley, Shrewsbury, SY5 6ND



Approximate Area = 1506 sq ft / 139.9 sq m
Garage = 373 sq ft / 34.6 sq m
Total = 1879 sq ft / 174.5 sq m
For identification only - Not to scale



Floor plan produced in accordance with RICS Property Measurement 2nd Edition, Incorporating International Property Measurement Standards (IPMS2 Residential). © nichecom 2025. Produced for Halls. REF: 1321359

FOR SALE

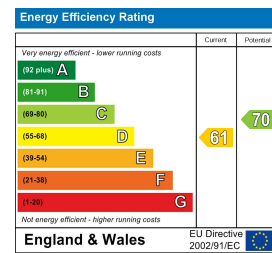
Offers Over £460,000

Silver Chains, Kenley Road, Harley, Shrewsbury, SY5 6ND

Property to sell? We would be delighted to provide you with a free no obligation market assessment of your existing property. Please contact your local Halls office to make an appointment. **Mortgage/financial advice.** We are able to recommend a completely independent financial advisor,

who is authorised and regulated by the FCA. Details can be provided upon request. **Do you require a surveyor?** We are able to recommend a completely independent chartered surveyor. Details can be provided upon request.

Energy Performance Rating



A particularly spacious and highly appealing detached house, offering a flexible and versatile living environment, with scope for improvement, set with garaging and lovely wraparound gardens with a delightful outlook towards the village church and Wenlock Edge.



01743 236444

Shrewsbury Sales
2 Barker Street, Shrewsbury, Shropshire, SY1 1QJ
E: shrewsbury@hallsgb.com



IMPORTANT NOTICE. Halls Holdings Ltd and any joint agents for themselves, and for the Vendor of the property whose Agents they are, give notice that: (i) These particulars are produced in good faith, are set out as a general guide only and do not constitute any part of a contract (ii) No person in the employment of or any agent of or consultant to Halls Holdings has any authority to make or give any representation or warranty whatsoever in relation to this property (iii) Measurements, areas and distances are approximate, Floor plans and photographs are for guidance purposes only (photographs are taken with a wide angled / zoom lenses) and dimensions shapes and precise locations may differ (iv) It must not be assumed that the property has all the required planning or building regulation consents. Halls Holdings, Bowmen Way, Shrewsbury, Shropshire SY4 3DR. Registered in England 06597073.

MILEAGES: Much Wenlock 2.4 miles, Shrewsbury 10.6 miles, Telford 11.2 miles. All mileages are approximate.



3 Reception Room/s



4 Bedroom/s



2 Bath/Shower Room/s



- Beautiful village location
- Spacious and versatile living environment
- Scope to modernise
- Driveway parking and garage
- Lovely gardens
- NO ONWARD CHAIN

ENTRANCE HALL

With wood block flooring, staircase to first floor, built in cloaks cupboard and doors off and to:-

GUEST WC

With low level WC, wash hand basin, part tiled walls.

STUDY

Dual aspect windows.

LIVING ROOM

With beautiful aspect over the gardens and towards the village church and Wenlock Edge. Sliding doors leading out to gardens. Twin glazed doors to:-

KITCHEN DINER

KITCHEN

Providing a range of eye and base level storage cupboards and drawers, generous worksurface area with stainless steel sink unit and drainer, space and connection for electric cooker, space for fridge, built in understairs store cupboard.

DINING AREA

With twin glazed french doors onto a walled patio seating area.

BEDROOM FOUR/FAMILY ROOM

With lovely outlook towards the village church and Wenlock Edge, two pairs of sliding patio doors leading out to gardens. Door to:-

REAR HALL/UTILITY

Tiled floor, fitted worktop with stainless steel sink unit, space and plumbing for washing machine, tiled splash, extractor fan, wall mounted electric heater, part glazed UPVC door to rear gardens, access door to garage, access to loft hatch, and doors off and to:-

WET ROOM

With tiled floor and white suite comprising low level WC, pedestal wash hand basin and large walk-in shower cubicle, fully tiled walls and extractor fan.

BOILER ROOM/UTILITY

With fitted worktop, stainless steel sink unit and drainer, base level cupboards and drawers, Worcester oil fired central heating boiler, space and plumbing for dishwasher, space for fridge freezer and panelled part glazed door to:-

REAR PORCH

With tiled floor and panelled part glazed door leading to driveway.

FIRST FLOOR LANDING

Built in airing cupboard housing the hot water cylinder, doors off and to:-

BEDROOM ONE

With extensive range of built in wardrobes with overhead cupboards, picture window with stunning outlook.

BEDROOM TWO

Access to loft space, range of built in bedroom furniture, including wardrobes, storage cupboards and drawers.

BEDROOM THREE

Picture window with views towards the village church and Wenlock Edge.

BATHROOM

Providing a coloured suite comprising low level WC, pedestal wash hand basin and bath, part tiled walls, wall mounted electric heater.

OUTSIDE

The property is approached on foot through an iron gate onto a part concreted and part flagged pathway which gives access to the front door. Vehicular access is provided to the side and offers a part concreted and part gravelled driveway with space for numerous vehicles whilst giving access to the garaging.

GARAGE

With remote controlled electric entrance door, power and light points.

THE GARDENS

Silver Chains is beautifully set in its plot and provides beautiful sweeping and flowing lawns, which are flanked by established and abundantly stocked shrubbery beds and borders. Positioned off the family room is a generous sun terrace which allows a lovely vista towards the village church and Wenlock Edge. To the rear of the garage is a sizeable gravelled area, which could be utilised for multiple purposes and also contains further patio seating spaces. External cold water tap.

GENERAL REMARKS

ANTI-MONEY LAUNDERING (AML) CHECKS

We are legally obligated to undertake anti-money laundering checks on all property purchasers. Whilst we are responsible for ensuring that these checks, and any ongoing monitoring, are conducted properly; the initial checks will be handled on our behalf by a specialist company, Movebutler, who will reach out to you once your offer has been accepted. The charge for these checks is £30 (including VAT) per purchaser, which covers the necessary data collection and any manual checks or monitoring that may be required. This cost must be paid in advance, directly to Movebutler, before a memorandum of sale can be issued, and is non-refundable. We thank you for your cooperation.

FIXTURES AND FITTINGS

Only those items described in these particulars are included in the sale.

TENURE

Freehold. Purchasers must confirm via their solicitor.

SERVICES

Mains water and electricity are understood to be connected. Oil fired central heating boiler. Drainage is to a septic tank. None of these services have been tested.

COUNCIL TAX

The property is in Council Tax band 'D' on the Shropshire Council Register.

VIEWINGS

By appointment through Halls, 2 Barker Street, Shrewsbury, SY1 1JQ.