

**2 Bed
Flat
located in**

AiHOMES.

Modern 2B2B Apartment | Legacy Building | Vauxhall SW11| A56940VG



£1,150,000

Welcome to this modern two-bedroom, two-bathroom apartment located in the prestigious Legacy Building in Vauxhall, SW11. Spanning an impressive 787 square feet, this flat offers a perfect blend of contemporary living and comfort.

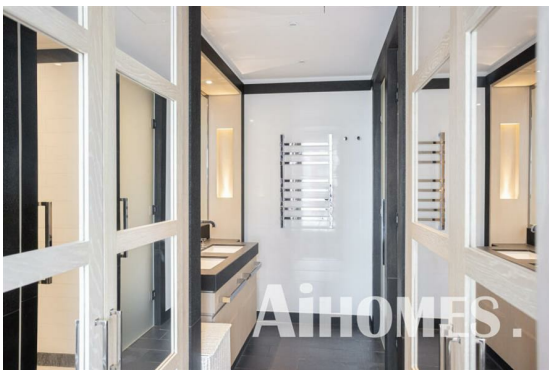
As you enter the apartment, you are greeted by a spacious and inviting layout that maximises natural light, creating a warm and welcoming atmosphere. The well-designed living area provides ample space for relaxation and entertaining, while the modern kitchen is equipped with high-quality appliances, making it a delight for any home chef.

Both bedrooms are generously sized, providing a peaceful retreat at the end of the day. The two bathrooms are stylishly appointed, ensuring convenience and privacy for residents and guests alike.

Situated in a vibrant area, this property benefits from excellent transport links and a variety of local amenities, including shops, restaurants, and parks, making it an ideal choice for those seeking a dynamic urban lifestyle.

With a lease term of 999 years and 994 years remaining, this apartment presents a fantastic opportunity for both first-time buyers and investors alike. Do not miss the chance to make this exceptional property your new home.





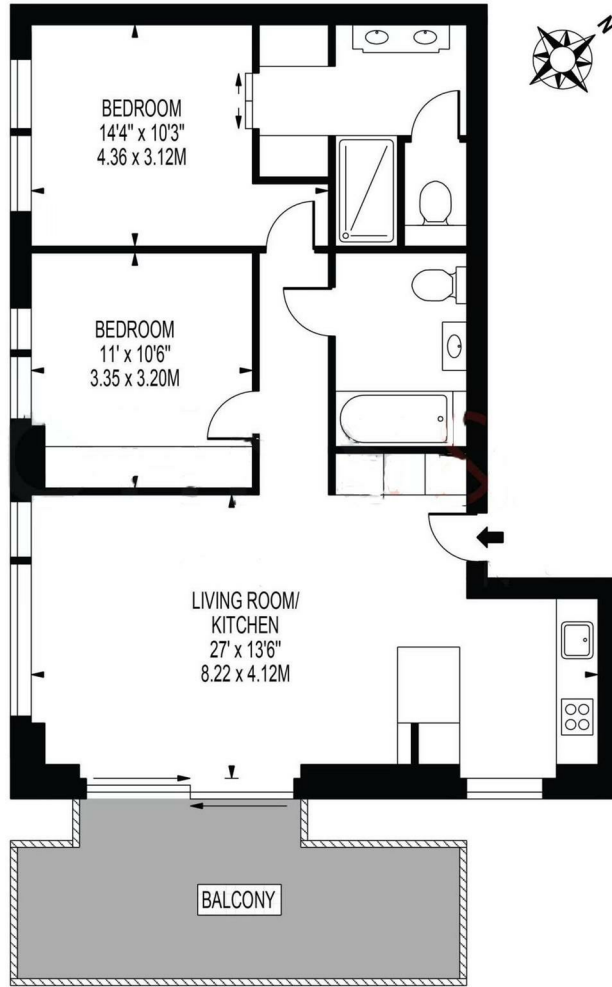


**Modern 2B2B Apartment | Legacy Building | Vauxhall
SW11 1A56Q10VC**



LEGACY BUILDING

APPROXIMATE GROSS INTERNAL FLOOR AREA: 787 SQ FT - 73.11 SQ M



Energy Efficiency Rating		Current	Potential
<i>Very energy efficient - lower running costs</i>			
(92 plus) A		84	
(81-91) B			
(69-80) C			
(55-68) D			
(39-54) E			
(21-38) F			
(1-20) G			
<i>Not energy efficient - higher running costs</i>			
England & Wales		EU Directive 2002/91/EC	

EPC Rating: B
Council Tax Band: F

CONTACT

5th floor, Empress Business Center
380 Chester Road
Manchester
M16 9EA

E: info@aihomes.uk

T: 0127 332 8069

AiHOMES.