



A WELL-PRESENTED THREE BEDROOM SEMI-DETACHED FAMILY HOME WITH SCOPE TO EXTEND (STPP)

Berry Lane, Rickmansworth, Hertfordshire, WD3 4DD

ROBSONS

Berry Lane, Rickmansworth, Hertfordshire, WD3 4DD

**LIVING ROOM • DINING ROOM • KITCHEN •
UTILITY ROOM • GUEST WC • THREE
BEDROOMS • FAMILY SHOWER ROOM •
GENEROUS REAR GARDEN • GARAGE &
DRIVEWAY • SCOPE EXTEND (STPP)**

Description

A well-presented three-bedroom semi-detached family home offering excellent potential to extend (STPP), a generous rear garden and a garage, situated in a sought-after residential location.

The property comprises an entrance hallway with a guest WC, leading to a front-aspect dining room which flows through to the spacious living room with patio doors opening directly onto the rear garden. The kitchen is fitted with a good range of wall and base units and provides space for freestanding appliances. Off the kitchen is a useful utility room with direct access to the garden.





To the first floor are three well-appointed bedrooms and a modern family shower room.

Externally, the property benefits from a generous rear garden mainly laid to lawn with a patio area ideal for outdoor entertaining. To the front there is a driveway providing off-street parking, a garage and side access to the rear garden.

Location

Rickmansworth town centre has a wide range of boutique shops, coffee houses, restaurants and major supermarkets. The Metropolitan and Chiltern line train services connect you to London Baker Street, Marylebone Station and beyond. The area is well served for good quality private and state schools for all ages. Rickmansworth offers a range of activities for the sporting individual.

Additional Information

Tenure: Freehold

Local Authority: Three Rivers District Council

Council Tax Band: D

Energy Efficiency Rating: C

For additional information, please refer to www.robsonsworld.com or call us on: 01923 777762.



Approximate Gross Internal Area
Ground Floor = 66.9 sq m / 720.1 sq ft
First Floor = 47.5 sq m / 510.8 sq ft
Total = 114.4 sq m / 1,230.9 sq ft

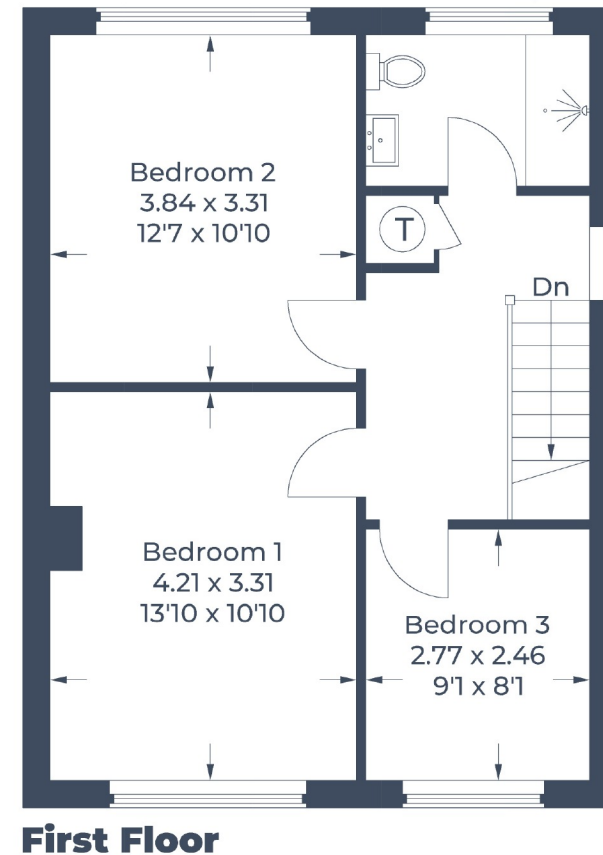
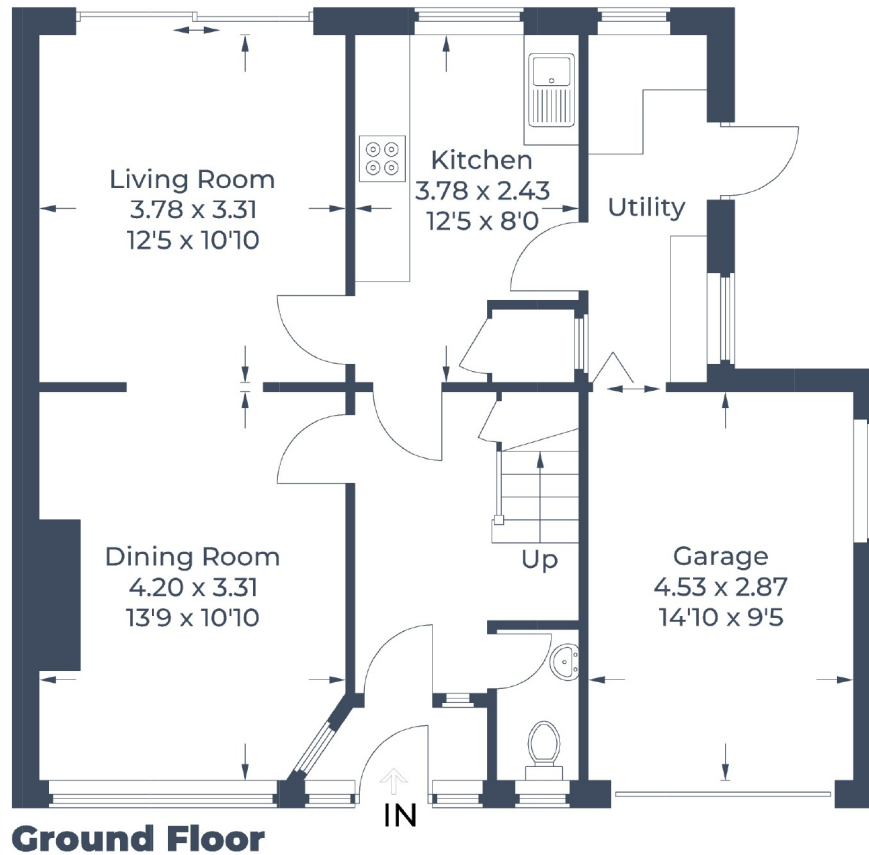
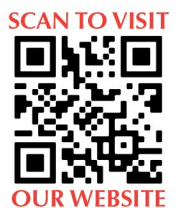


Illustration for identification purposes only,
measurements are approximate, not to scale.
© CJ Property Marketing Produced for Robsons



130 High Street, Rickmansworth WD3 1AB
Tel: 01923 777762 Email: rickmansworth@robsonsweb.com
www.robsonsweb.com



Important notice: Robsons, their clients and any joint agents give notice that 1: They are not authorised to make or give any representations or warranties in relation to the property either here or elsewhere, either on their own behalf or on behalf of their client or otherwise. They assume no responsibility for any statement that may be made in these particulars. These particulars do not form part of any offer or contract and must not be relied upon as statements or representations of fact. 2: Any areas, measurements or distances are approximate. Plot sizes and dimensions are taken from Promap and are approximate. The text, photographs and plans are for guidance only and are not necessarily comprehensive. It should not be assumed that the property has all necessary planning, building regulation or other consents and Robsons have not tested any services, equipment or facilities. Purchasers must satisfy themselves by inspection or otherwise.