



33 New Street, Doddington, March, Cambs, PE15 0SP

Beautifully Presented - Popular Village Location - Mid Terraced Cottage - 2 Bedroom - Kitchen - Lounge & Dining Room - Bathroom - Rear Garden - Call To View (01354) 696700

£185,000



Ground Floor

Lounge

4.50m (14'9") max x 3.29m (10'10") Double glazed entrance door and window to front, radiator, laminate flooring, open fire with wooden surround, door to:

Dining Room

4.03m (13'3") x 2.78m (9'1") Double glazed window to rear, radiator, laminate flooring, storage cupboard.

Kitchen

4.34m (14'3") x 2.48m (8'2") Fitted with a matching range of base and eye level units with worktop space over, tiled splashbacks, stainless steel sink, built-in dishwasher, plumbing for washing machine, space for fridge/freezer and tumble dryer. There is a built-in oven, hob with extractor hood over, two double glazed windows to side, radiator, double glazed door to the rear garden.

Bathroom

Panelled bath with shower over, pedestal wash hand basin and low-level WC, partly tiled walls, double glazed window to side.

First Floor

Bedroom 1

4.17m (13'8") x 3.30m (10'10") Double glazed window to front, fire place, radiator.

Bedroom 2

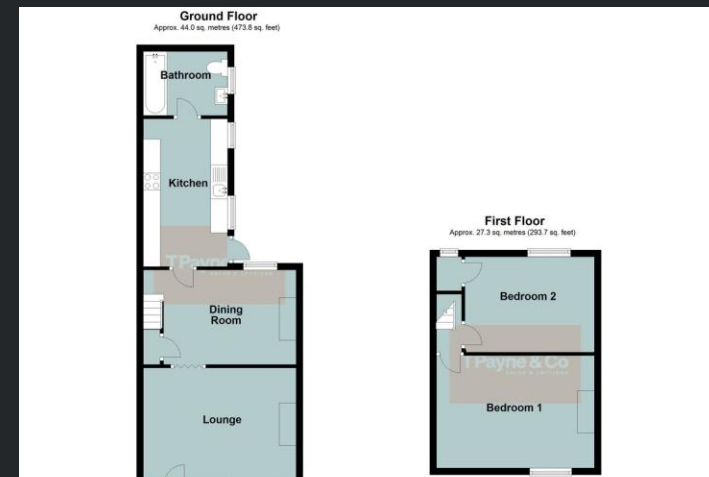
3.81m (12'6") x 2.81m (9'3") Double glazed window to rear, radiator, walk in wardrobe.

Outside

To the front and rear there are beautifully presented gardens with lawn and mature planting.

EPC Rating - D

Note Measurements for guidance only due to shape of the rooms.



Call to arrange a viewing **01354 696700** **T Payne & Co**
SALES & LETTINGS



Agents Notes: Whilst every care has been taken to prepare these sales particulars, they are for guidance purposes only. All measurements are approximate and for general guidance purposes only and whilst every care has been taken to ensure their accuracy, they should not be relied upon and potential buyers are advised to recheck the measurements.