



Hugo Road, N19
£1,900,000

Dexters



Hugo Road, N19

A thoughtfully refurbished Victorian home combining original character with contemporary design. Extended and modernised throughout, the property offers practical living spaces and excellent indoor outdoor flow.

The main entrance is at raised ground floor level, leading into a spacious front reception room featuring a bay window, a feature fireplace and excellent natural light.

The lower ground floor features a bay fronted bedroom and a stunning open plan kitchen and dining area, designed to maximise light and space. The kitchen is finished with modern cabinetry, generous counter space, skylights and a central island, creating an ideal setting for entertaining. The space also benefits from large glass doors which open directly onto a spacious garden.

The first floor has two well-proportioned bedrooms, along with a family bathroom positioned off the landing. There is also potential to extend into the loft, subject to the usual planning consents, offering further scope to increase living space.

Hugo Road is located within half a mile of Tufnell Park station (Northern line) and the numerous local shops, cafés and boutiques on Fortress Road.

Features

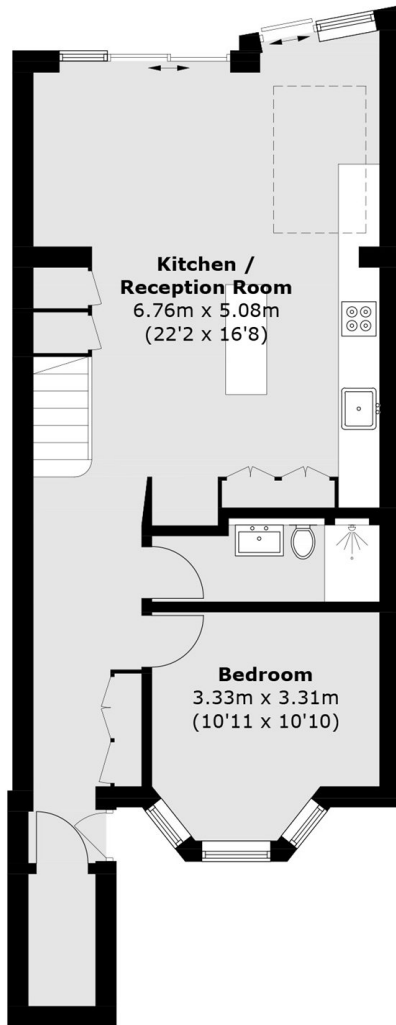
- Three Bedrooms
- South Facing Garden
- Bright Spacious Living
- Modern Kitchen Extension
- Charming Period Features
- Private Garden



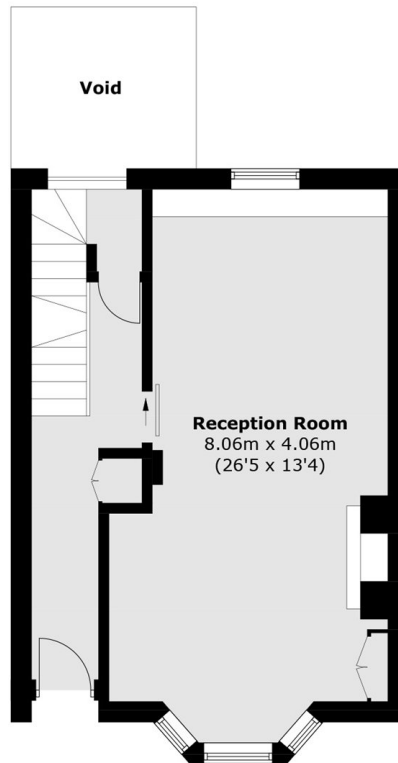




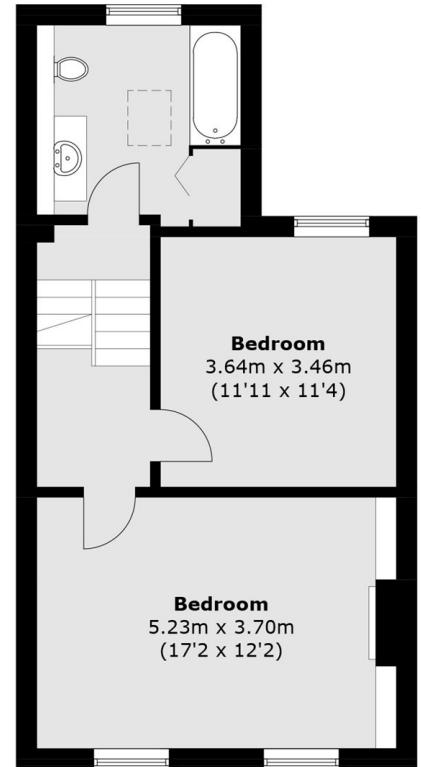
Hugo Road, London, N19



Lower Ground Floor



Raised Ground Floor



First Floor

Total area (approx.): 146.0 sq. m (1,571.5 sq. ft)