



Connells

Meadow Way
Yarnton Kidlington

Meadow Way Yarnton Kidlington OX5 1TA

for sale
£250,000



Property Description

Situated on Meadow Way in the popular village of Yarnton is this beautifully presented one-bedroom semi-detached home that is perfect for first time buyers or investors.

The accommodation on offer includes an entrance porch, a good sized sitting room, a modern kitchen featuring plenty of cupboard space and room for appliances, bathroom and a good sized double bedroom. Externally there is two allocated parking spaces and well established garden to the rear that has recently been landscaped.

The property is well located to Oxford and Oxford Parkway which provides train links to London.

Situated on Meadow Way in the popular village of Yarnton is this beautifully presented one-bedroom semi-detached home that is perfect for first time buyers or investors.

The accommodation on offer includes an entrance porch, a good sized sitting room, a modern kitchen featuring plenty of cupboard space and room for appliances, bathroom and a good sized double bedroom. Externally there is two allocated parking spaces and well established garden to the rear that has recently been landscaped.

The property is well located to Oxford and Oxford Parkway which provides train links to London.

Situated on Meadow Way in the popular village of Yarnton is this beautifully presented one-bedroom semi-detached home that is perfect for first time buyers or investors.

The accommodation on offer includes an entrance porch, a good sized sitting room, a modern kitchen featuring plenty of cupboard space and room for appliances, bathroom and a good sized double bedroom. Externally there is two allocated parking spaces and well established garden to the rear that has

recently been landscaped.

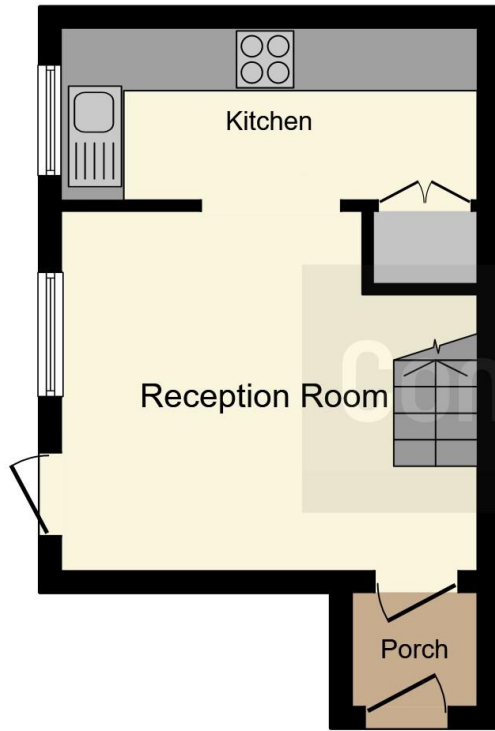
The property is well located to Oxford and Oxford Parkway which provides train links to London.

Situated on Meadow Way in the popular village of Yarnton is this beautifully presented one-bedroom semi-detached home that is perfect for first time buyers or investors.

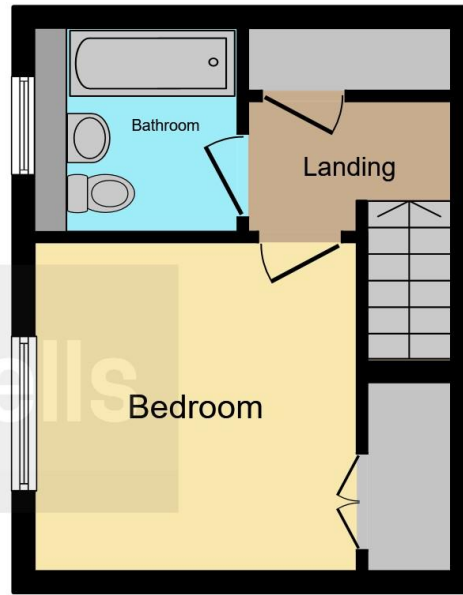
The accommodation on offer includes an entrance porch, a good sized sitting room, a modern kitchen featuring plenty of cupboard space and room for appliances, bathroom and a good sized double bedroom. Externally there is two allocated parking spaces and well established garden to the rear that has recently been landscaped.

The property is well located to Oxford and Oxford Parkway which provides train links to London.





Ground Floor



First Floor



This floor plan is for illustrative purposes only. It is not drawn to scale. Any measurements, floor areas (including any total floor area), openings and orientation are approximate. No details are guaranteed, they cannot be relied upon for any purpose and they do not form part of any agreement. No liability is taken for any error, omission or misstatement. A party must rely upon its own inspection(s). Powered by www.focalagent.com

To view this property please contact Connells on

T 01993 778 281
E witney@connells.co.uk

13 Corn Street
 WITNEY OX28 6DB

EPC Rating: Council Tax
 Awaited Band: B

view this property online connells.co.uk/Property/WNY305959

Tenure: Freehold



1. MONEY LAUNDERING REGULATIONS Intending purchasers will be asked to produce identification documentation at a later stage and we would ask for your co-operation in order that there will be no delay in agreeing the sale. 2. These particulars do not constitute part or all of an offer or contract. 3. The measurements indicated are supplied for guidance only and as such must be considered incorrect. Potential buyers are advised to recheck measurements before committing to any expense. 4. We have not tested any apparatus, equipment, fixtures, fittings or services and it is in the buyers interest to check the working condition of any appliances.

Connells Residential is registered in England and Wales under company number 1489613, Registered Office is Cumbria House, 16-20 Hockliffe Street, Leighton Buzzard, Bedfordshire, LU7 1GN. VAT Registration Number is 500 2481 05.

See all our properties at www.connells.co.uk | www.rightmove.co.uk | www.zoopla.co.uk

Property Ref: WNY305959 - 0002