



Summerlands Avenue, W3 £400,000

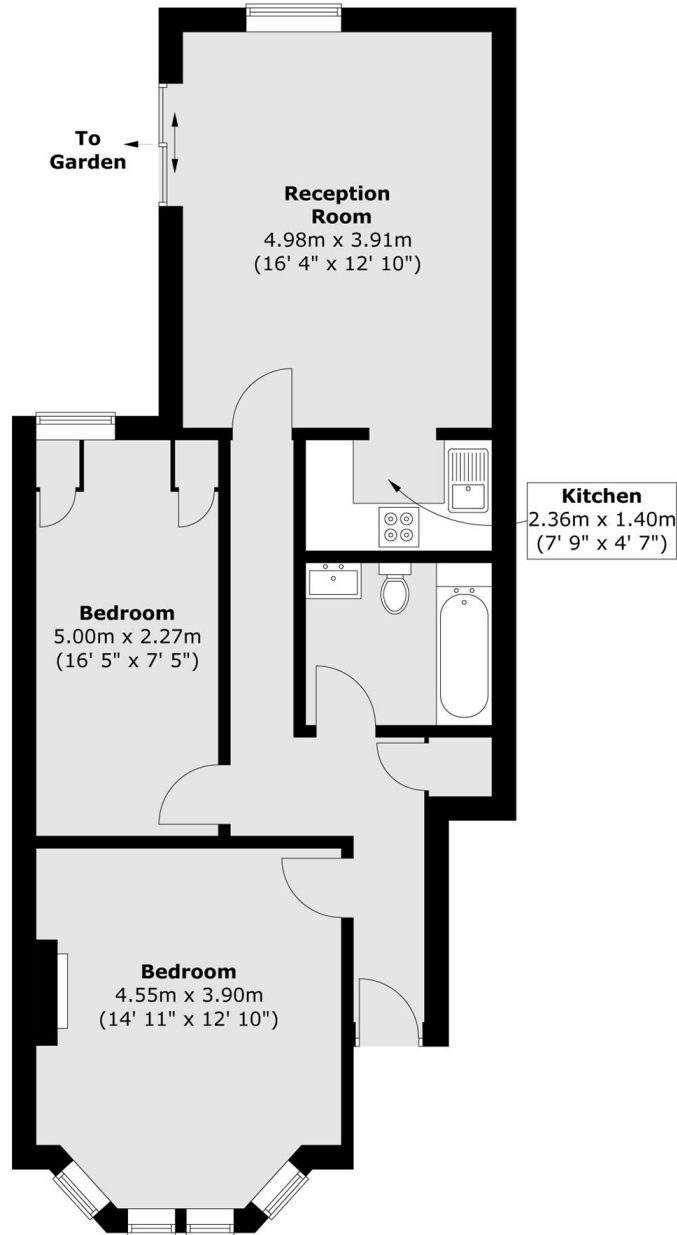
Offers in excess of A bright and spacious two bedroom, ground floor flat with direct access to a shared garden and an off-street parking space in the heart of Acton.

Summerlands Avenue is ideally located moments from Churchfield Road, offering a vibrant café culture and a great selection of boutique shops, bars and eateries. The property is in close proximity to the Elizabeth Line which offers direct journeys to the heart of London.

Features

- Two Bedroom
- Share Of Freehold
- Period conversion
- Close to Elizabeth line
- Outside space
- Allocated parking

Summerlands Avenue, London, W3



Total area (approx.) : 68.2 sq. m (734 sq. ft)