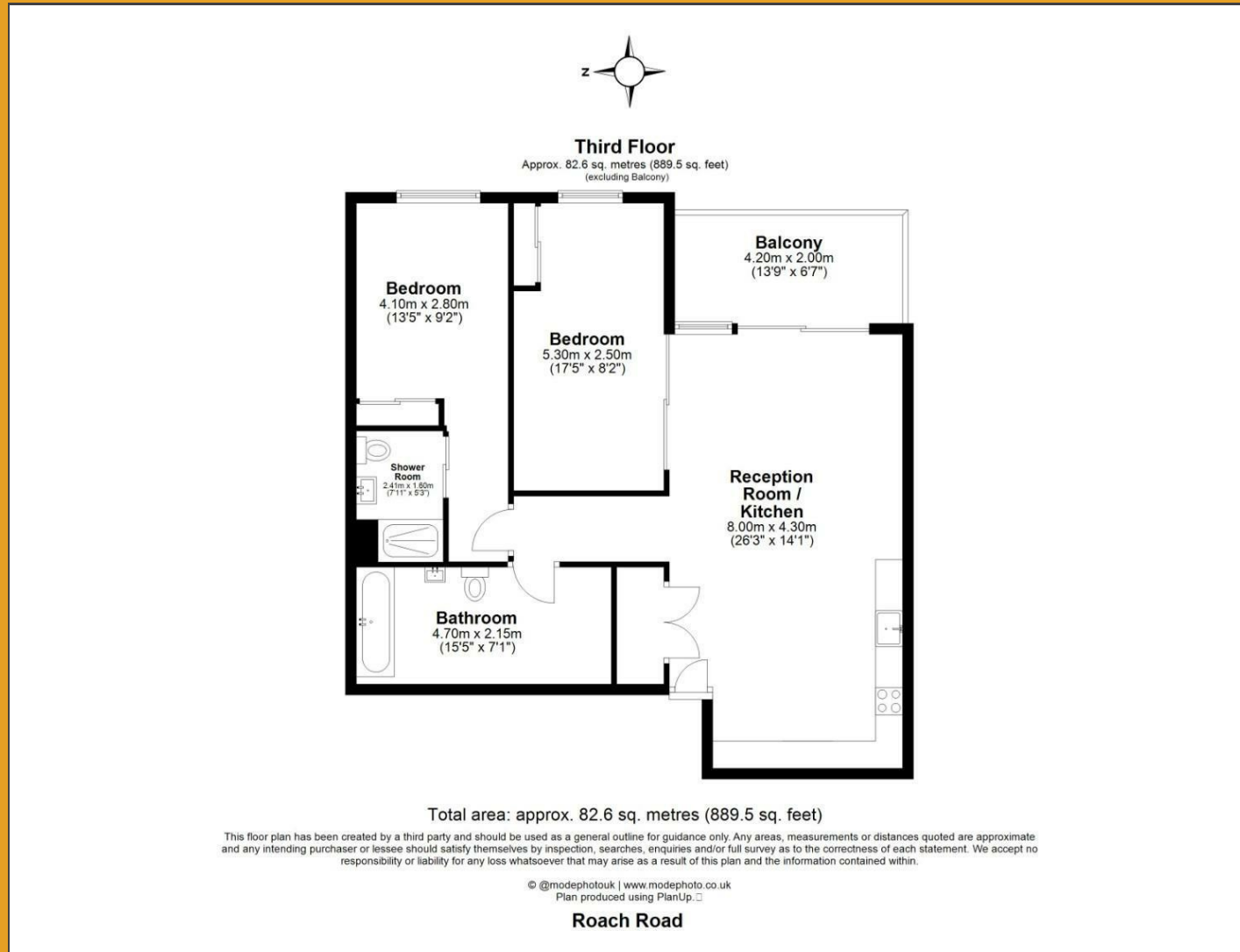


# Floor Plan

# BRICKS.

ESTATE AGENTS



BRICKS.  
ESTATE AGENTS

£625,000

These particulars, whilst believed to be accurate are set out as a general outline only for guidance and do not constitute any part of an offer or contract. Intending purchasers should not rely on them as statements of representation of fact, but must satisfy themselves by inspection or otherwise as to their accuracy. No person in this firm's employment has the authority to make or give any representation or warranty in respect of the property.

## Contact Us



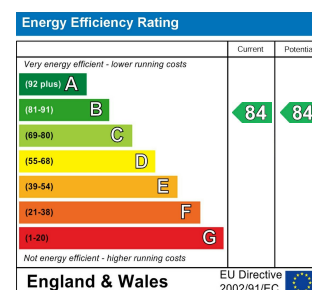
0203 634 9998



hello@bricksestateagents.co.uk



186 Queens Road, Buckhurst Hill, Essex, IG9 5BD



## Legacy House 4A Roach Road, London, E3 2PA

Bricks Estate Agents are delighted to introduce an extraordinary two-bedroom apartment nestled in the vibrant heart of Hackney Wick, within the prestigious Legacy House. This remarkable residence seamlessly blends modern elegance with luxurious comfort, creating an inviting sanctuary that beckons you to call it home.

# Legacy House 4A Roach Road, London, E3 2PA



- \*Guide Price £625,000 - £650,000 | End Of Chain
- Exceptional Two-Bedroom Apartment In Hackney Wick
- Spacious Double Bedrooms, Including A Stunning Master Suite
- Expansive Open-Plan Living Area Perfect For Entertaining
- Larger-Than-Average Private Balcony With Canal Views | Exclusive Access To Landscaped Rooftop Terrace
- \*Open Day Saturday 18th April 2026 Appointment Based Booking Only\*
- Immaculate Design With Modern Elegance
- Floor-To-Ceiling Glass Windows For Abundant Natural Light
- High-Specification Kitchen With Integrated Siemens And Smeg Appliance
- Vibrant Neighborhood With Independent Cafes, Bars, And Galleries

**Living Room / Dining / Kitchen**

26'2" x 14'1" (8.00 x 4.30)

**Balcony**

13'9" x 6'6" (4.20 x 2.00)

**Bedroom Two**

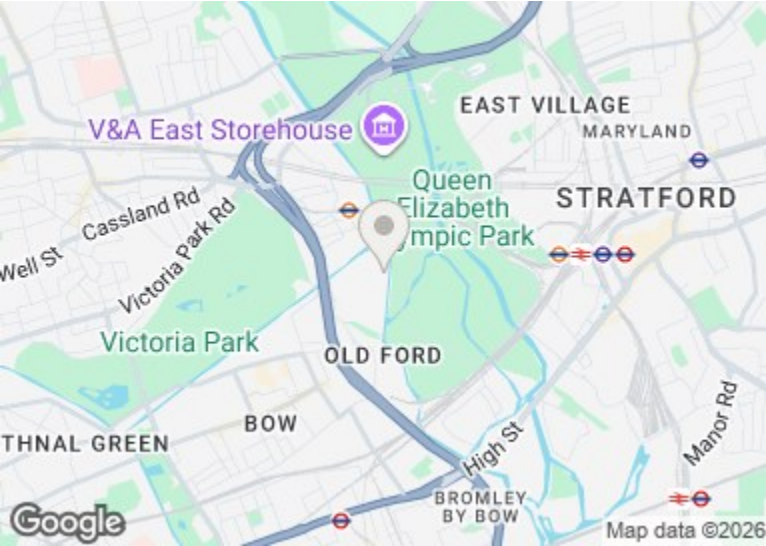
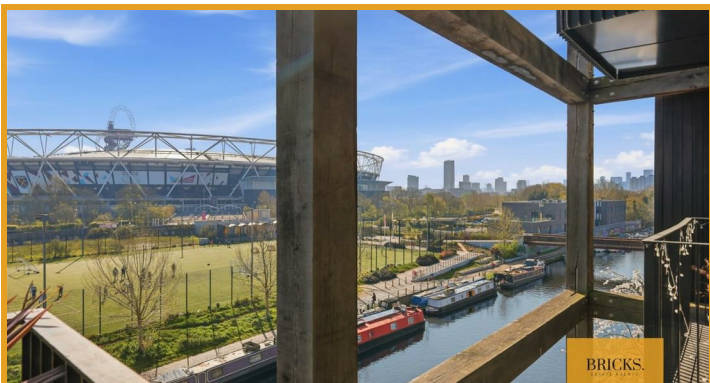
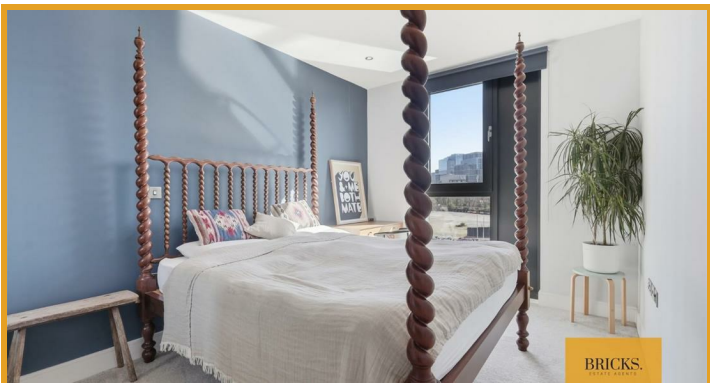
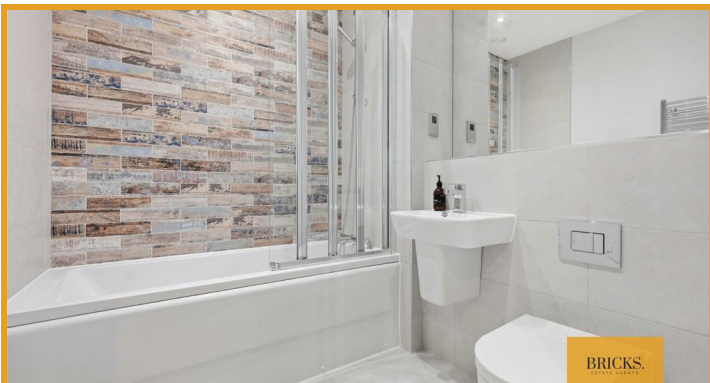
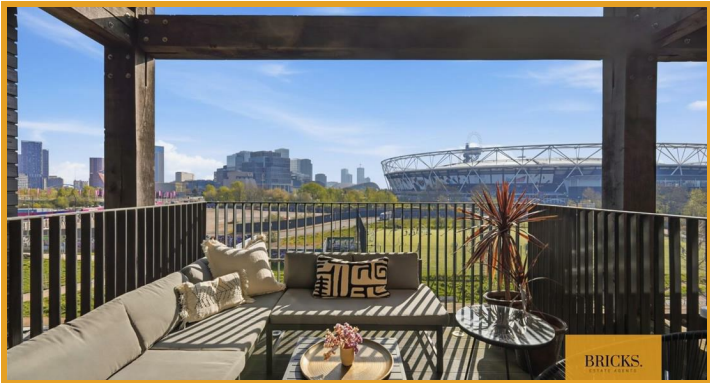
17'4" x 8'2" (5.30 x 2.50)

**Master Bedroom**

13'5" x 9'2" (4.10 x 2.80)

**En-Suite**

7'10" x 5'2" (2.41 x 1.60)



## Directions

**BRICKS.**  
ESTATE AGENTS