



# HIVE

FLAT 5 HOMELANDS HOUSE  
FERNDOWN  
BH22 9DA





## *Agent's introduction*

No Forward chain | Over 60s | Ground  
Floor with patio | Ferndown Town  
Centre | Home Manager | Residents  
Lounge | Guest suite | Laundry room  
| Access to communal Gardens.







HIVE







## *Property highlights*

- Well presented ground floor retirement apartment
- Living room with French door to private patio
- Kitchen
- Double bedroom
- Modern shower room
- No forward chain
- Residents lounge and Laundry room
- House Manager and security entry system
- Guest suite
- Ferndown town centre

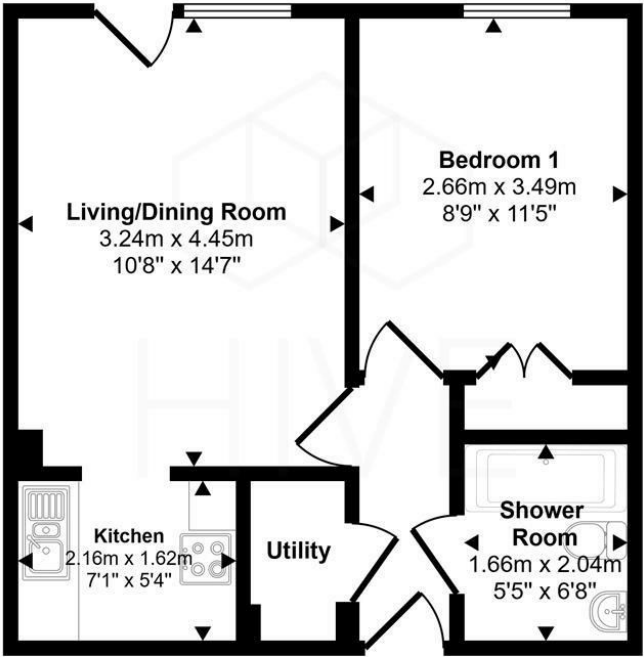


HIVE



Floor plan and EPC

Approx Gross Internal Area  
38 sq m / 408 sq ft



Floorplan

This floorplan is only for illustrative purposes and is not to scale. Measurements of rooms, doors, windows, and any items are approximate and no responsibility is taken for any error, omission or mis-statement. Icons of items such as bathroom suites are representations only and may not look like the real items. Made with Made Snappy 360.

| Energy Efficiency Rating                    |                            |           |
|---|----------------------------|-----------|
|   | Current                    | Potential |
| Very energy efficient - lower running costs |                            |           |
| (92 plus) <b>A</b>                          |                            |           |
| (81-91) <b>B</b>                            |                            |           |
| (69-80) <b>C</b>                            |                            |           |
| (55-68) <b>D</b>                            |                            |           |
| (39-54) <b>E</b>                            |                            |           |
| (21-38) <b>F</b>                            |                            |           |
| (1-20) <b>G</b>                             |                            |           |
| Not energy efficient - higher running costs |                            |           |
| England & Wales                             | EU Directive<br>2002/91/EC |           |





HIVE





HIVE & Partners Unit F1, Arena Business Centre 9 Nimrod Way, Ferndown, BH21 7UH  
01202 122 002 | [www.hiveandpartners.co.uk](http://www.hiveandpartners.co.uk) | [sales@hiveandpartners.co.uk](mailto:sales@hiveandpartners.co.uk)