

A photograph of a living room with blue walls and white crown molding. In the center is a white fireplace with a dark metal grate. Above the mantel is a large circular white tray with several small white objects. To the left of the fireplace is a grey sofa with red cushions and a lamp with a green shade. To the right is a red sofa and a light green ottoman. Large windows on the right wall offer a view of a residential street with trees and houses. The floor is made of light-colored wood.

Castles

ASKING PRICE

£1,500,000

Harvey Road

London, N8 9PA

Castles

PROPERTY SUMMARY

A unique, five-bedroom period family home occupying a prominent corner position and benefiting from three light-filled aspects. The property features two reception rooms and a spacious kitchen/diner opening onto a south-west facing rear garden. Additional accommodation includes a shower room, family bathroom and useful cellar storage.

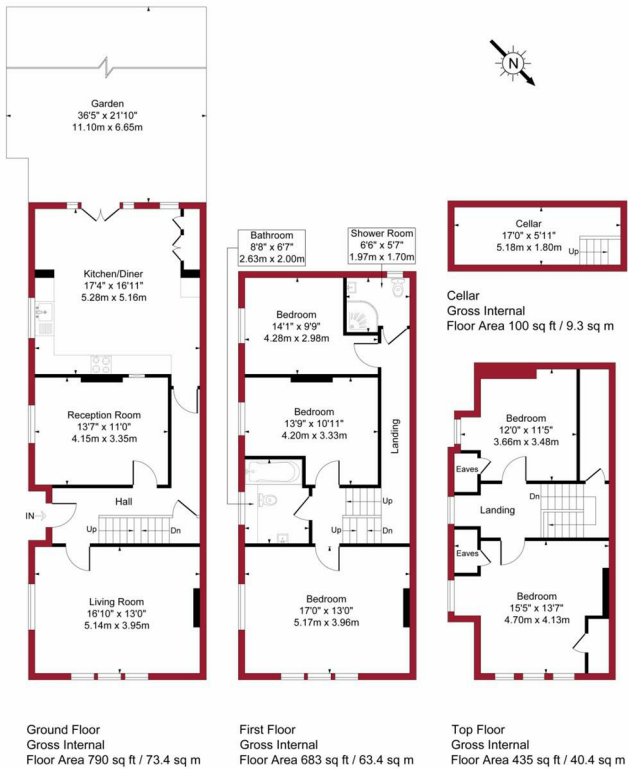
Ideally situated equidistant between Crouch End Broadway and Hornsey Station, with direct rail links to Finsbury Park Underground Station and Moorgate. This charming, character-filled home warrants early viewing.



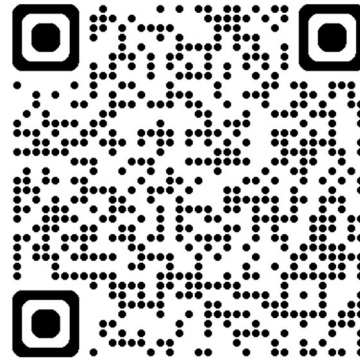


Harvey Road, London, N8

Approximate Gross Internal Area = 2008 sq ft / 186.5 sq m
(Including Cellar)



For a guide to the area please scan this code for more information



House - End Terrace

Freehold

Council: Haringey

Council Tax Band: G



Floor plan produced in accordance with RICS Property Measurement 2nd Edition. Although Pink Plan Ltd ensures the highest level of accuracy, measurements of doors, windows and rooms are approximate and no responsibility is taken for error, omission or misstatement. These plans are for representation purposes only and no guarantee is given on the total square footage of the property within this plan. The figure icon is for initial guidance only and should not be relied on as a basis of valuation.



Agents Note: Whilst every care has been taken to prepare these particulars, they are for guidance purposes only. All measurements are approximate and are for general guidance purposes only and whilst every care has been taken to ensure their accuracy, they should not be relied upon and potential buyers/tenants are advised to recheck the measurements



OFFICE ADDRESS

12 Topsfield Parade
Crouch End
London
N8 8PR

OFFICE DETAILS

020 8348 5515
crouchend@castles.london
<https://www.castles.london>

