



A stunning four double bedroom home located in the heart of Chigwell Village and offered "chain free". The property is only a short walk to Chigwell's central line, sought after schools, fine restaurants, coffee shops and local amenities.

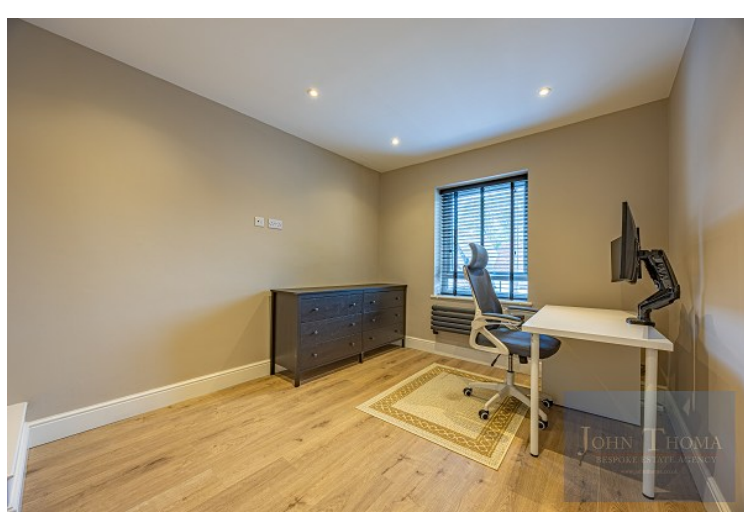
This beautifully presented home is arranged over two floors, over 1,650 square feet in size and was recently refurbished throughout.

High Road, Chigwell

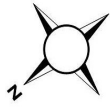


- ◆ THE PROPERTY IS ONLY A SHORT WALK TO CHIGWELL'S CENTRAL LINE, SOUGHT AFTER SCHOOLS AND LOCAL AMENITIES
- ◆ THIS BEAUTIFULLY PRESENTED HOME IS ARRANGED OVER TWO FLOORS AND WAS RECENTLY REFURBISHED THROUGHOUT
- ◆ A HUGE MODERN OPEN PLAN LOUNGE-DINING ROOM AND KITCHEN MEASURING 32' 4" x 19' 1" WITH BI-FOLDING DOORS
- ◆ A FITTED UTILITY ROOM, A SECOND RECEPTION ROOM AS A GYMNASIUM AND A GROUND FLOOR GUEST CLOAKROOM

- ◆ THE MASTER BEDROOM IS SPACIOUS MEASURING 17' 5" x 11' 6" WITH BESPOKE FITTED WARDROBES AND AN EN-SUITE
- ◆ THERE ARE THREE FURTHER WELL-PROPORTIONED BEDROOMS AND A MODERN FOUR PIECE FAMILY BATHROOM
- ◆ THE REAR PRIVATE GARDEN IS SOUTH FACING WITH A LAWN, A PAVED PATIO, PLANTS AND SHRUBS TO THE BORDERS
- ◆ TO THE FRONT OF THE PROPERTY THERE IS A DRIVEWAY AND A GARDEN WITH PLANTS, SHRUBS AND A LAWN

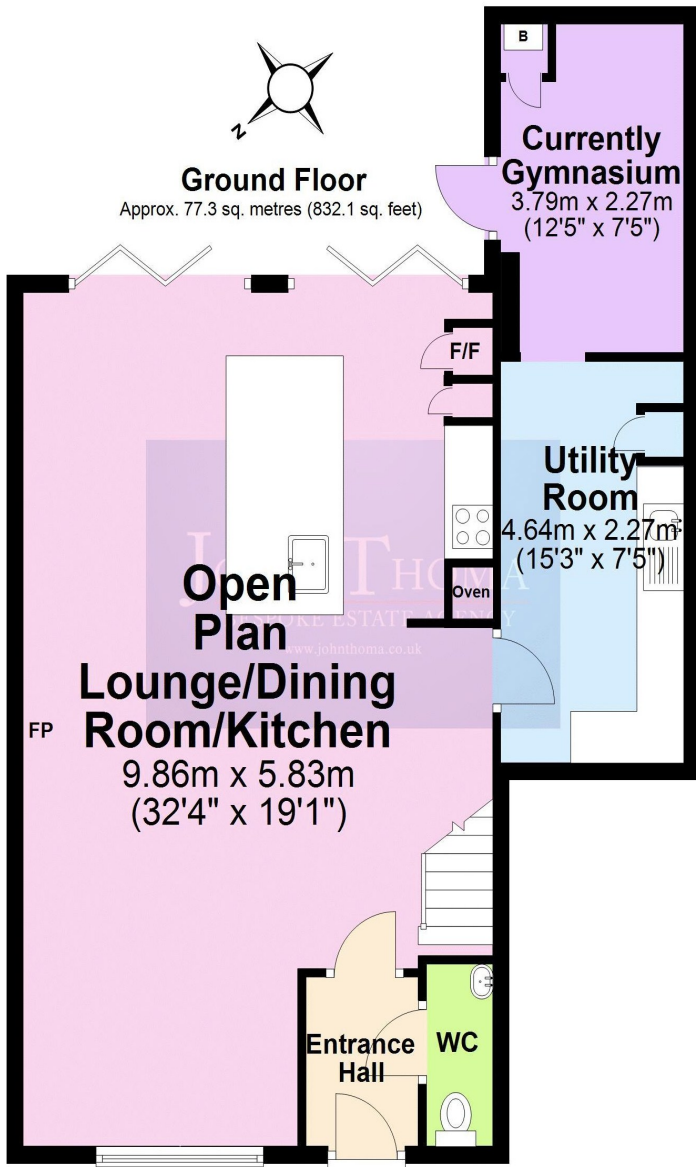


Agent Note: The information provided about this property does not constitute or form part of an offer or contract, nor may it be regarded as representations. All interested parties must verify accuracy and your solicitor must verify tenure/lease information, fixtures & fittings and, where the property has been extended/converted, planning/building regulation consents. All dimensions are approximate and quoted for guidance only as are floor plans which are not to scale and their accuracy cannot be confirmed. Reference to appliances and/or services does not imply that they are necessarily in working order or fit for the purpose.



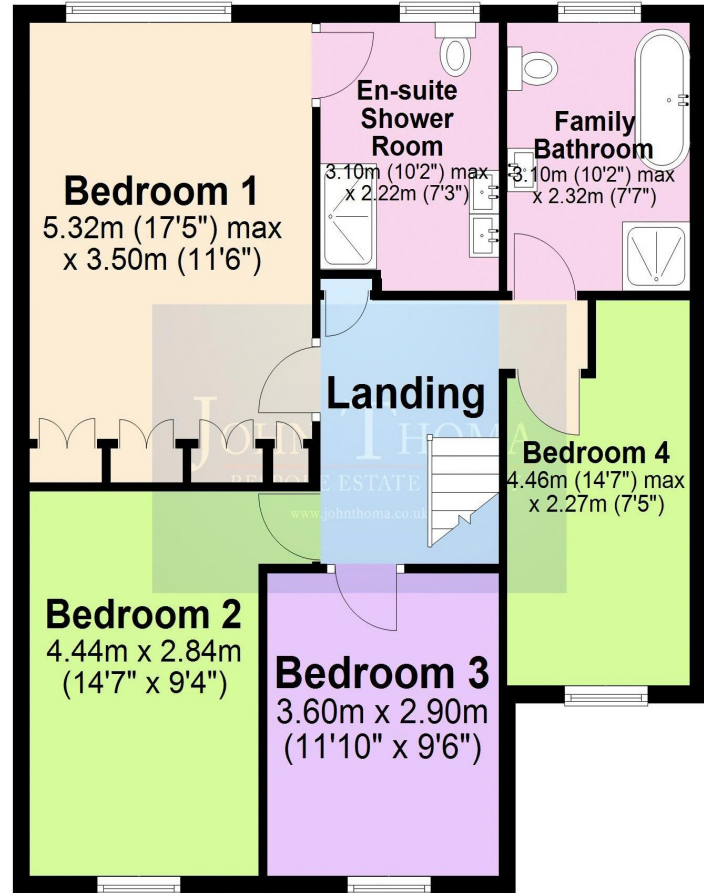
Ground Floor

Approx. 77.3 sq. metres (832.1 sq. feet)



First Floor

Approx. 76.0 sq. metres (818.3 sq. feet)



Total area: approx. 153.3 sq. metres (1650.4 sq. feet)

[John Thoma Bespoke Estate Agency, Chigwell Branch](#)

The Coach House 201 High Road Chigwell Essex IG7 5BJ

[020 8340 8833](tel:02083408833) Local call rate