

## Clerkenwell Road, EC1M

£4,500 Per calendar month

A rare and impressive two-bedroom warehouse conversion in the heart of Clerkenwell. Set on a high floor, this stunning apartment delivers exposed brickwork and stripped wooden floors.

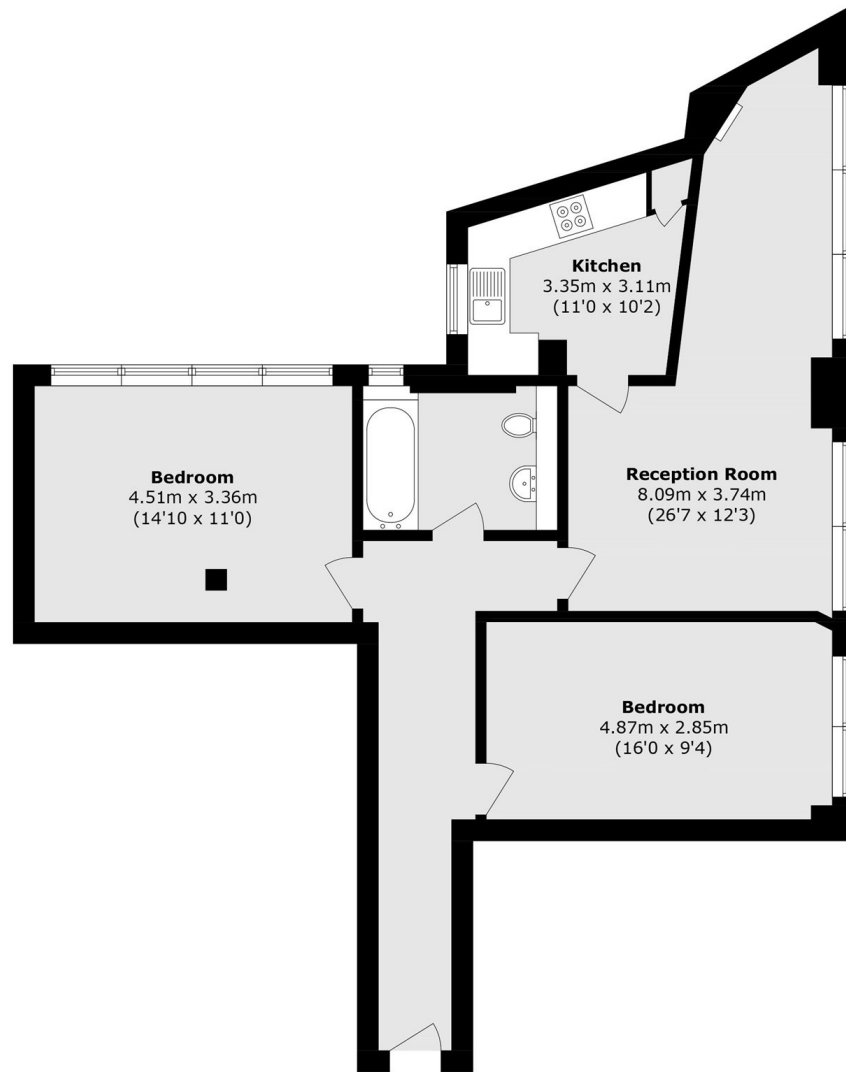
The spacious reception room features a dining area and large windows that flood the space with natural light. A separate kitchen, two spacious double bedrooms with high ceilings and exposed beams. The building benefits from a resident's roof terrace with views across Clerkenwell and the City.

Situated on the Clerkenwell road, opposite the famous Zetter Hotel with a plethora of local attraction nearby including Smithfield's Market, Clerkenwell Green, as well as being within a short walk of St. Pauls and the City. Farringdon underground and over ground station.

### Features

- Two Bedrooms
- Warehouse Conversion
- Wooden Floors
- Exposed Brickwork
- Residents Roof Terrace

Clerkenwell Road,  
London, EC1M



### Second Floor

Total area (approx.): 76.7 sq. m (825.5 sq. ft)