

Bryn Arian, Groesffordd Marli, Denbighshire, LL22 9DR

£475,000

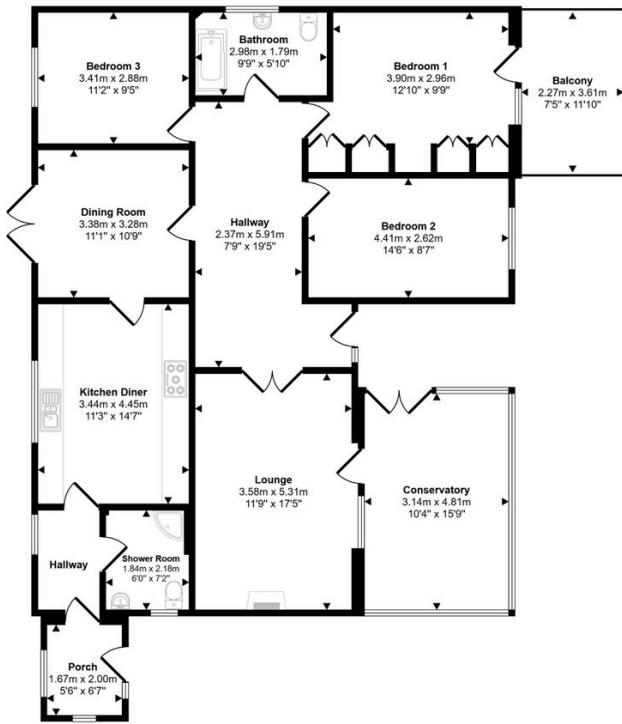


This splendid detached bungalow sits in an elevated position, enjoying panoramic views over open countryside and towards the coast. Available with no forward chain, this property offers space in abundance and has been extremely well maintained. Features include an Inglenook fireplace within the impressive lounge, a lovely conservatory, a large kitchen plus separate dining room, three bedrooms and a family bathroom. A sweeping "horseshoe" gravel driveway, a double garage with self contained annex below and extensive lawns complete the picture. Located within the rural area known as Groesffordd Marli, a village with its own primary school, chapel and community centre, yet is by no means isolated as the cathedral city of St Asaph is within four miles, together with the A55 Expressway.

Key Features

- Detached bungalow
- Beautiful and extensive views
- Rural position
- No forward chain
- Three bedrooms
- Self contained annex
- Double garage
- Freehold
- Council tax band - F
- EPC rating - D

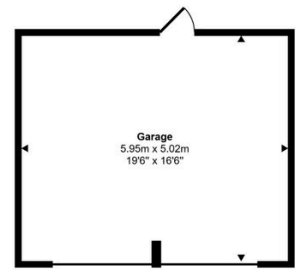
Approx Gross Internal Area
282 sq m / 2170 sq ft



Floorplan
Approx 137 sq m / 1480 sq ft



Annex
Approx 34 sq m / 369 sq ft



Garage
Approx 30 sq m / 321 sq ft

This floorplan is only for illustrative purposes and is not to scale. Measurements of rooms, doors, windows, and any items are approximate and no responsibility is taken for any error, omission or mis-statement. Icons of items such as bathroom suites are representations only and may not look like the real items. Made with Made Snappy 360.

CONSUMER PROTECTION REGULATIONS 2008 AND THE BUSINESS PROTECTION FROM MISLEADING MARKETING REGULATIONS 2008

These particulars, whilst believed to be accurate, are set out for guidance only and do not constitute any part of an offer or contract. Prospective purchasers or tenants should not rely on these particulars as statement or representation of fact, but must satisfy themselves by inspection or otherwise as to their accuracy. No person in the employment of PETER LARGE Estate Agents has the authority to make or give any representation or warranty in relation to the property. Room sizes are approximate and all comments are of the opinion of PETER LARGE Estate agents having carried out a walk through inspection. These sales particulars are prepared under the consumer regulations 2008 and are governed by the business from misleading marketing regulations 2008.