



Cobblers Cottage

59A Fore Street, Port Isaac

Guide Price: £350,000

JB ESTATES

EST.  1971

Cobblers Cottage

59A Fore Street, Port Isaac, PL29 3RE

Tucked away in a peaceful location, just moments from Port Isaac's historic harbour, Cobblers Cottage is an ideal coastal bolthole. This charming bungalow offers two-bedrooms, one shower room and an open plan living space enjoying cliff and sea views. Currently operating as a holiday let, this converted fish-cellar includes the rare benefit of one private parking space to the front. Cobblers Cottage makes for the perfect, low maintenance holiday bolthole in this popular Cornish location. EPC Band E

- Two double bedrooms and a shower room
- A fully fitted kitchen leading to an open plan dining/sitting room with a log burner and glimpses of the sea.
- Currently a successful holiday let.
- Private parking for one vehicle to the front of the property.
- In all approximately 617.6 sq. ft (57.4 sq. m)

Port Isaac Harbour 100 mtrs, Polzeath 6 miles, Rock 7 miles, Wadebridge 8.5 miles, Bodmin Parkway Station 16 miles, Newquay Airport 21 miles, Truro 33 miles, Exeter 67 miles

Viewings by appointment

Guide Price £350,000

FREEHOLD



OVERVIEW

Situated just moments from Port Isaac's charming harbour, Cobblers Cottage is a delightful seaside escape. This characterful bungalow offers two bedrooms, one shower room, and a bright open-plan living area with a cosy wood burner, that takes full advantage of the sea and coastal views. Operating successfully as a holiday let, the property comes with a private parking space, an uncommon feature in this harbourside village. The Southwest Coast Path runs past the property and offers miles of scenic walking and easy access to nearby Port Gaverne harbour.

THE ACCOMMODATION

The property is arranged over one floor and comprises: Open plan living accommodation with a log burner and views down to the sea | Fully equipped kitchen | Two double bedrooms (one with a rooflight) | Shower room.

LOCATION

Port Isaac is a popular holiday destination and residential village on the rugged North Cornwall coast, famed for its historic fishing harbour, quaint winding streets and scenic coastal walks. Loved by millions as Portwenn in ITV's Doc Martin and the birthplace of The Fisherman's Friends, Port Isaac has several good places to eat and drink, all within walking distance of the property. These include two of Nathan Outlaws eateries, where he holds 3 Michelin stars. Other notable restaurants and pubs include The Port Gaverne Hotel and Pilchards, The Mote, and The Golden Lion. Most everyday shopping requirements can be met in Port Isaac at the Co-Op but the market town of Wadebridge, with an inspiring collection of independent shops, is only about 8 miles distant.

OUTSIDE

This property has a single allocated parking place to the front, with space for a small patio dining set.

SERVICES

Mains water, electricity and drainage. Electric night storage heaters.



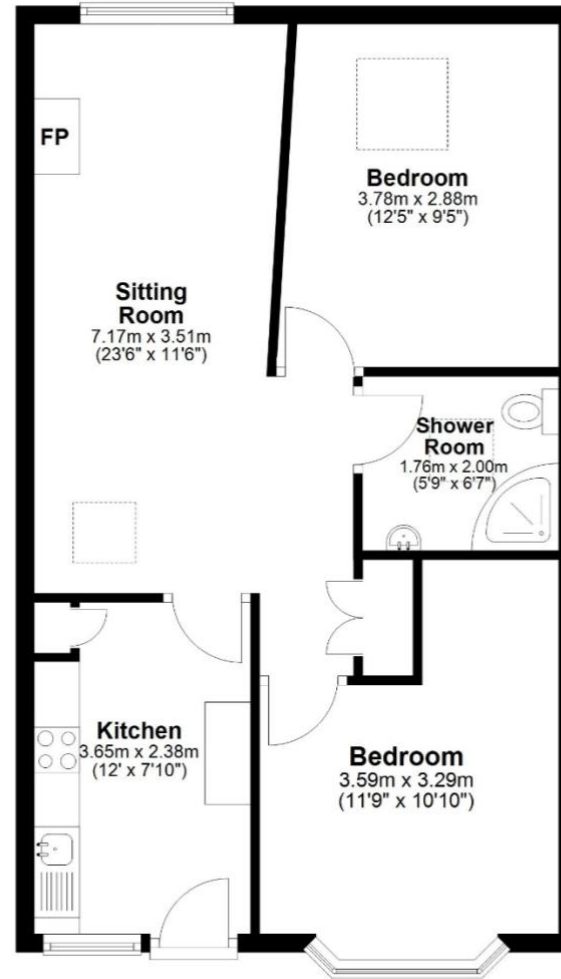


View from the sitting room



Ground Floor

Approx. 57.4 sq. metres (617.6 sq. feet)



Total area: approx. 57.4 sq. metres (617.6 sq. feet)

Whilst every attempt has been made to ensure the accuracy of this floorplan, measurements of doors, windows, rooms, and any other items are approximate, and no responsibility is taken for any error, omission, or mis statement. This plan is for illustrative purposes only and should be used as such by any prospective purchaser. The services, systems and appliances shown have not been tested and no guarantee as to their operability or efficiency can be given.

JB ESTATES

EST. 1971

Pavilion Building, Rock, Cornwall PL27 6JU
01208 862601
propertysales@johnbrayestates.co.uk
www.johnbrayestates.co.uk

IMPORTANT NOTICE John Bray Estates have prepared these details as a brief description of the property as they know it. These particulars do not form part of any offer or contract and must not be relied upon as statements or representations of fact. Any areas, measurements or distances are approximate. The text, photographs and plans are for guidance only and are not necessarily comprehensive. It cannot be assumed that the property has all necessary planning, building regulation, other consents or clear title and John Bray Estates will not have tested any services, equipment or facilities. No responsibility is taken for any travelling expenses incurred should the property prove to be inaccurately described or withdrawn. A buyer is advised to obtain verification on all matters from their solicitor.