

shepherds

A better home
moving experience



12 Clyde Terrace

Hertford, SG13 7JP

Price Guide £435,000



12 Clyde Terrace

Hertford, SG13 7JP

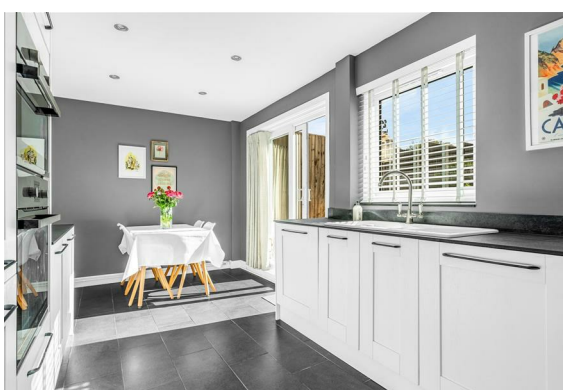
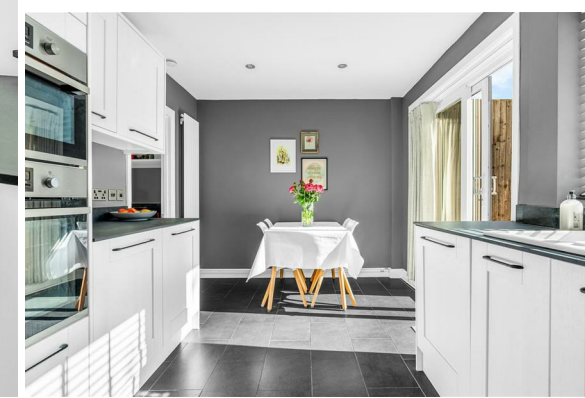
Positioned within easy reach of Hertford town centre and beautifully presented throughout, this three bedroom end of terrace home offers well-balanced living space, a landscaped garden and excellent parking.

The ground floor is well arranged, with a separate living room to the front providing a comfortable and private space. To the rear, a bright open plan kitchen/dining room forms the heart of the home, with direct access out onto a thoughtfully landscaped garden - ideal for both everyday living and entertaining.

Upstairs, the property offers three well-proportioned bedrooms, all comfortable in size, alongside a beautifully finished family bathroom.

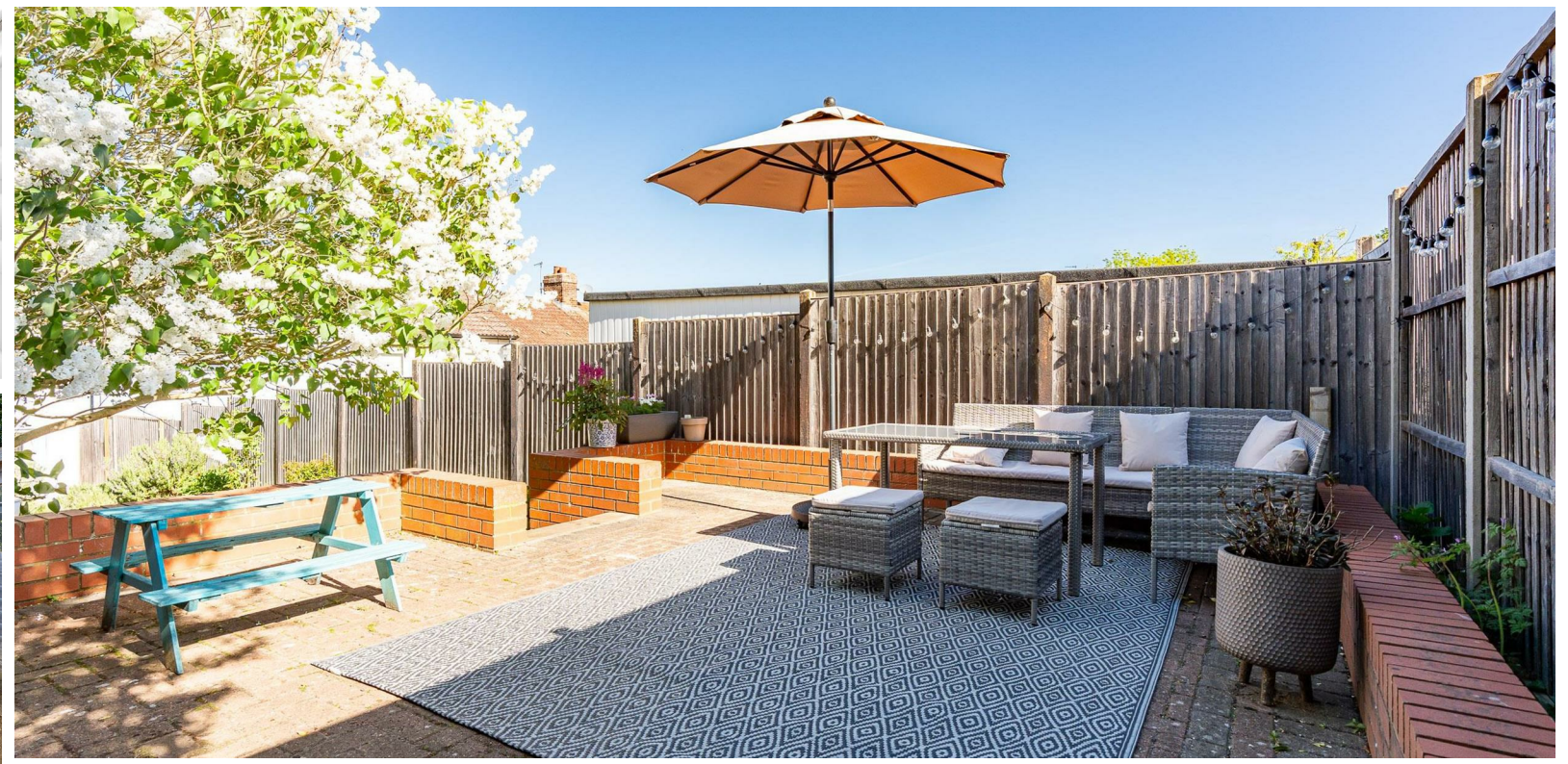
Externally, the garden has been carefully designed to create an attractive and low maintenance outdoor space. As an end of terrace, the property also benefits from gated side access, adding practicality. To the front, there is a driveway providing off-street parking for two vehicles.

The location is another key strength, being just a short walk from Hertford town centre, Hertford East station, and the open green spaces of Hartham Common and The Meads.

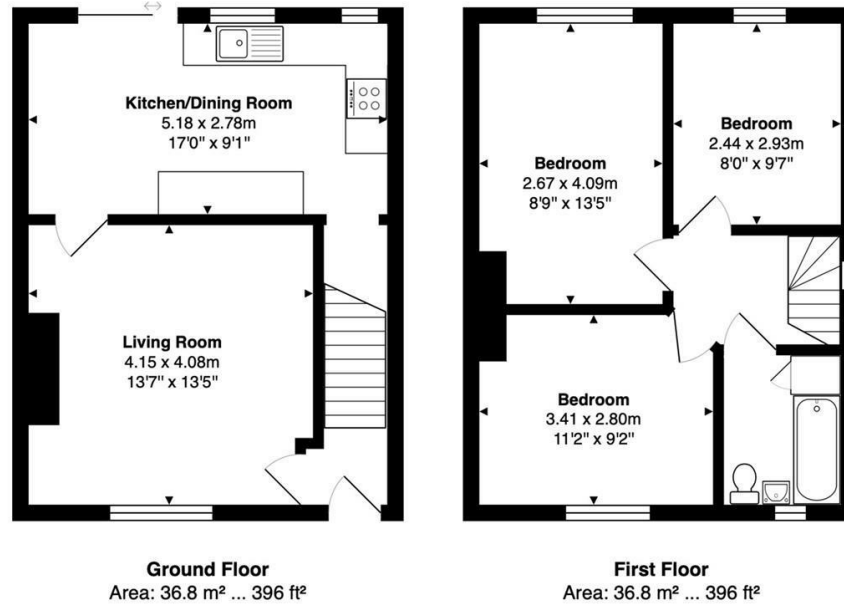




- End of terrace home
- Three well-proportioned bedrooms
- Beautifully presented throughout
- Open plan kitchen/dining room
- Separate living room
- Landscaped rear garden
- Gated side access
- Driveway for two vehicles
- Short walk to Hertford town centre
- Easy access to Hertford East & Hartham Common



Floor Plan



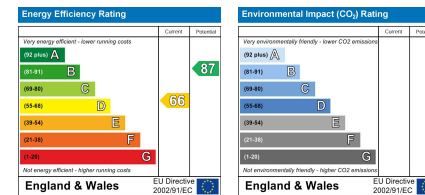
Total Area: 73.6 m² ... 792 ft²

FOR ILLUSTRATIVE PURPOSES ONLY; NOT TO SCALE
Whilst every attempt has been made to ensure the accuracy of the floor plan shown, all measurements, positioning, fixtures, features, fittings and any other data shown are an approximate interpretation for illustrative purposes only and are not to scale. No responsibility is taken for any error, omission, miss-statement or use of data shown.
Property marketing provided by www.matthewkyle.co.uk

Viewing

Please contact Shepherds of Hertford on 01992 551955 if you wish to arrange a viewing appointment for this property or require further information.

Energy Performance Graph



These particulars, whilst believed to be accurate are set out as a general outline only for guidance and do not constitute any part of an offer or contract. Intending purchasers should not rely on them as statements of representation of fact, but must satisfy themselves by inspection or otherwise as to their accuracy. No person in this firm's employment has the authority to make or give any representation or warranty in respect of the property.

Riverside House, 6 Millbridge, Hertford, SG14 1PY
Tel: 01992 551955 Email: enquiries@shepherdsfhertford.co.uk