



82A Bow Field, Hook, RG27 9SA

£1,400



82A Bow Field, Hook, RG27 9SA

£1,400

New to the market, this well presented modern two bedroom end of terrace house is located in a popular residential area of Hook in Hampshire.

The property benefits from a private entrance leading to a small hallway with under stair storage, long living / dining room with laminate flooring and French doors to the rear garden, modern kitchen with appliances and downstairs WC, two double bedrooms upstairs and a modern bathroom with bath and shower.

To the front of the property you have driveway parking for two vehicles, with side access to a large private rear garden with patio and stairs to a lower lawn area and storage shed.

Bow Field is just a ten minute walk from Hook town centre, the mainline railway station and a large Sainsburys supermarket.

Description



Situation

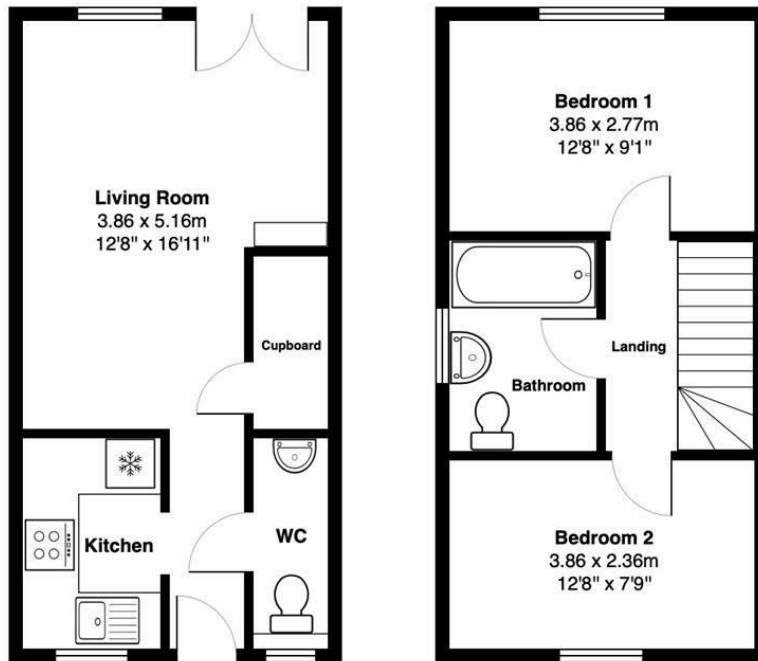


Unfurnished

Council Tax Band: C

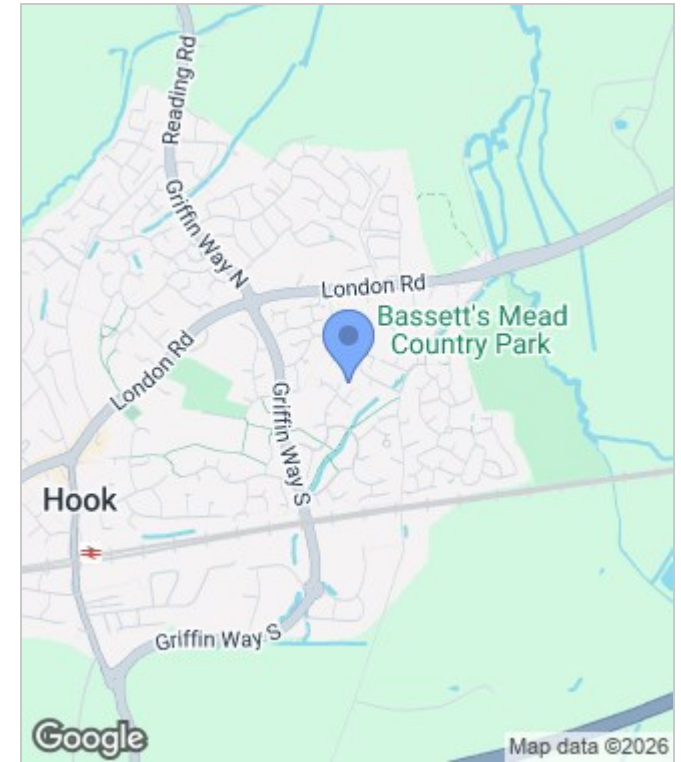
Available: 1st May 2026

Floor Plans

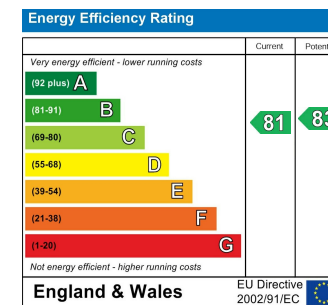


All measurements are approximate and for display purposes only

Area Map



Energy Performance Graph



These particulars, whilst believed to be accurate are set out as a general outline only for guidance and do not constitute any part of an offer or contract. Intending purchasers should not rely on them as statements of representation of fact, but must satisfy themselves by inspection or otherwise as to their accuracy. No person in this firm's employment has the authority to make or give any representation or warranty in respect of the property.