



Clarence Way

London, NW1

Fixed Price £1,250,000

A stunning house in the most charming of streets. This naturally bright property is presented in excellent condition. The ground floor is fully opened up, and everything leads out to the delightful South-facing garden. The upper floor boasts two double bedrooms, family bathroom, and a roof terrace complete with hot tub. There is ample storage and a downstairs shower room.

CHESTERTONS



Clarence Way

London, NW1

- Fantastic location
- Stylish interior
- South-facing garden
- Close to schools and transport
- Roof terrace



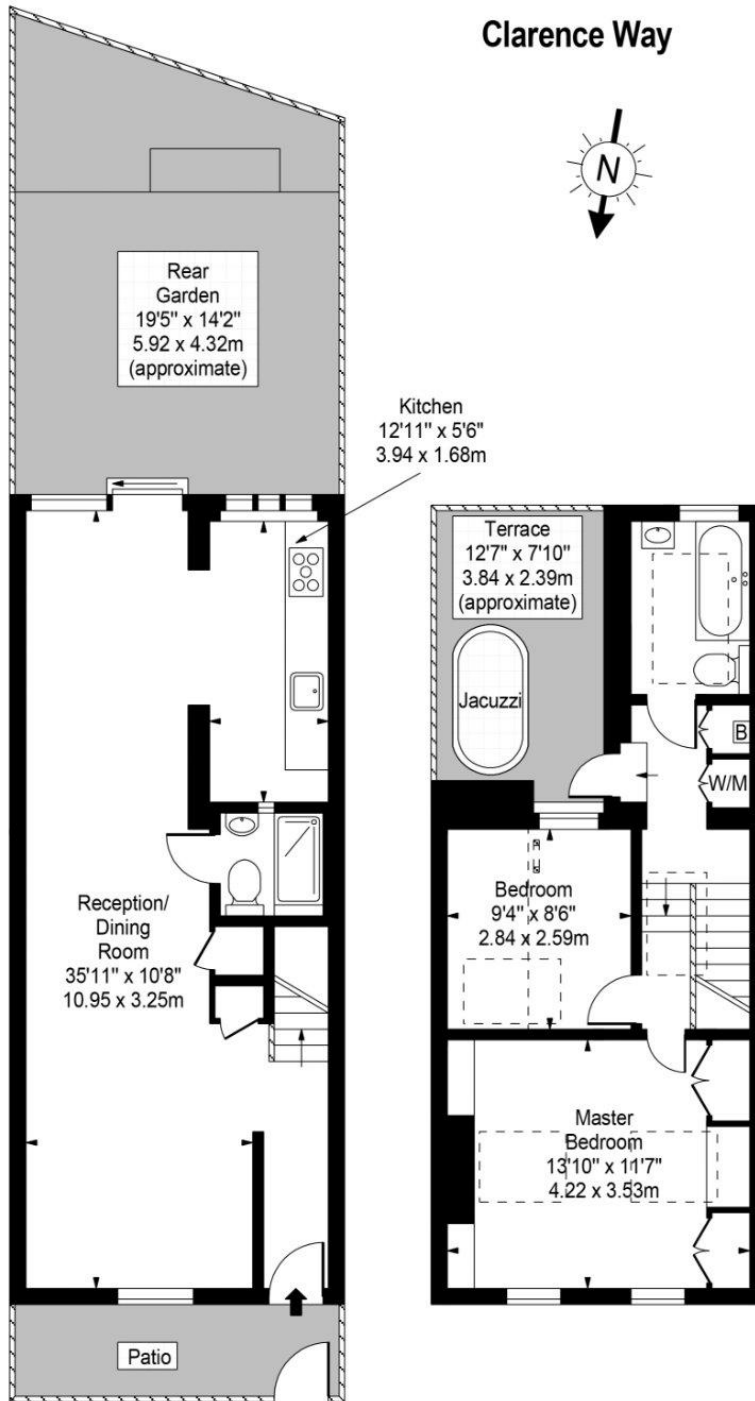
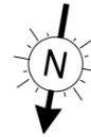
Clarence Way is a Cul-de-sac meaning it is virtually traffic free. It is perfectly located to take advantage of the fantastic local amenities. These include a vast array of shops and cafes and excellent transport links. Equidistant to both Chalk Farm and Camden underground stations. Kentish Town West overland station is nearby, as are the green open spaces of Primrose Hill.

Tenure: Freehold
Service Charge: £0
Ground Rent: £0
Local Authority: Camden
Council Tax Band: F

Chestertons Camden & Kentish Town Sales

99-101 Parkway
Camden
London
NW1 7PP
camden@chestertons.co.uk
020 7267 2053
chestertons.co.uk

Clarence Way



Ground Floor

Gross Internal Area - 514 Sq Ft - 46.75 Sq M

First Floor

Gross Internal Area - 391 Sq Ft - 36.32 Sq M

Approx Gross Internal Area 905 Sq Ft - 84.07 Sq M

For Illustration Purposes Only - Not To Scale

