



Let **UK** Home

2 Bedrooms

Flat

Located in London

£950,000



info@letukhome.co.uk

<https://www.letukhome.co.uk/>

01795 358 886



19 Glenthorne Road London

W6 0EF



Let UK Home are excited to offer this spacious two-bedroom apartment at Handley House, part of the Sovereign Court development, in the heart of Hammersmith, W6.

The apartment consists of two large double bedrooms(master with ensuite, a spacious open-plan kitchen & living area leading to a large private balcony, a modern family bathroom, and ample storage.

Residents will further benefit from a fully equipped state-of-the-art gym and fitness facility, residents' only meeting room, communal courtyard, concierge, and 24-hour security services.

Set amongst modern restaurants, bars, and independent cafés, together with world-class shopping, the iconic Hammersmith Bridge and the majestic River Thames are also nearby. Theatre, cinema, dance, and art venues are all on your doorstep, with the West End a short tube ride away.

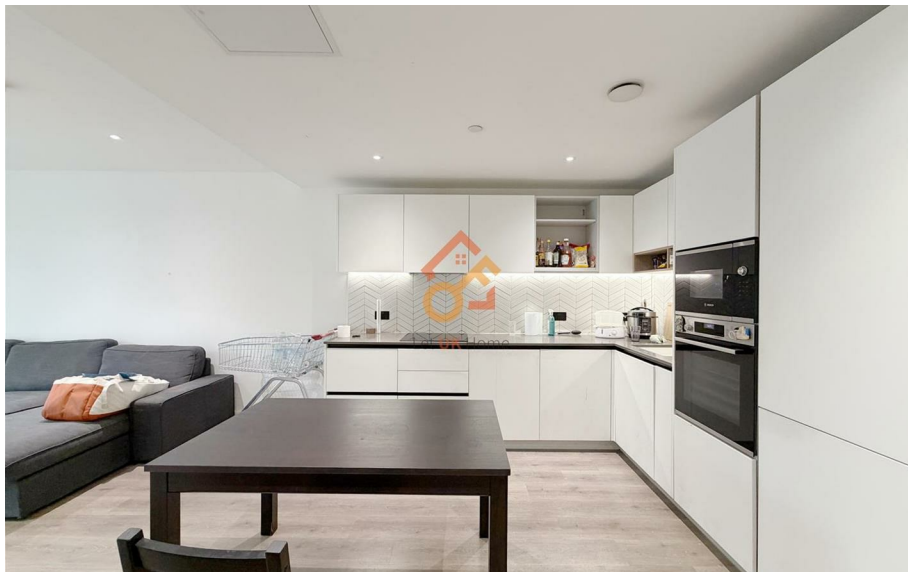
Handley House in Sovereign Court is only a short distance from Hammersmith stations, which is serviced by the Circle, District, Piccadilly and Hammersmith and City lines, and close to many of London's most fashionable locations, including Kensington, Fulham, and Chiswick.

Within walking distance to the public grammar girls' school Sacred Heart High School, and adjacent to the century-old top private girls' schools The Godolphin and Latymer School and St Paul's Girls' School. Also within walking distance are the co-educational Latymer Upper School and the top boys' school St Paul's

19 Glenthorne Road London

£950,000 Leasehold

- 1st Floor
- 24h Security
- CCTV
- Concierge Service
- The Gym
- EPC Rating: C





APARTMENT	2 BEDROOM	89.2 sq m	960 sq ft*
Total Internal		83.9 sq m	903 sq ft
Living/Dining/Kitchen		3.30m x 8.10m	10'10" x 26'7"
Bedroom 1		2.91m x 4.85m	9'7" x 15'11"
Bedroom 2		2.75m x 4.40m	9'0" x 14'5"
Balcony		5.3 sq m	57 sq ft



Let **UK** Home

3F 2 Eastbourne Terrace
 Paddington
 London
 W2 6LG

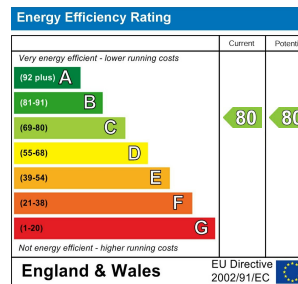
01795 358 886

info@letukhome.co.uk

Council Tax Band: F

Local Authority:

Agents Note: Whilst every care has been taken to prepare these particulars, they are for guidance purposes only. All measurements are approximate and are for general guidance purposes only and whilst every care has been taken to ensure their accuracy, they should not be relied upon and potential buyers/tenants are advised to recheck the measurements.



<https://www.letukhome.co.uk/>