



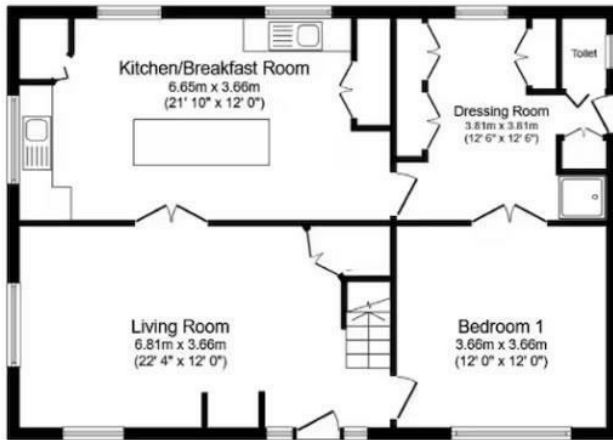
Main Road

Dibden, Southampton SO45 5TD

- LOVELY DETACHED COTTAGE
- 5 BEDROOMS - SLEEPS 12
- BEAUTIFUL SPACIOUS KITCHEN
- SPACIOUS, COZY SITTING ROOM
- TWO BATHROOMS
- LARGE PRIVATE GARDEN
- HOSPITABLE PATIO
- PARKING FOR 10 CARS W/GATES
- BREAKFAST/DINING ROOM - SEATS 12
- INDIVIDUAL ROOMS OR ENTIRE COTTAGE

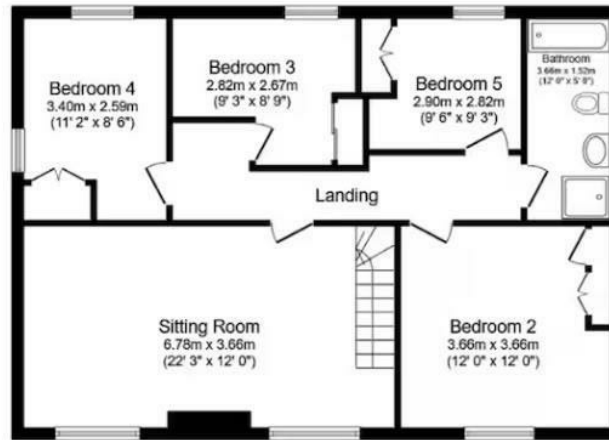
£725,000 Freehold

Local Authority **NFDC**
Council Tax Band **F**
EPC Rating **D**



Ground Floor

Floor area 78.8 m² (848 sq.ft.)



First Floor

Floor area 78.8 m² (848 sq.ft.)



Citrine Estates Office

7 High Street, Hythe, Southampton,
SO45 6AG

Contact

023 81980 023
christina@citrine-estates.co.uk
www.citrine-estates.co.uk

Agents Note: Whilst every care has been taken to prepare these particulars, they are for guidance purposes only. All measurements are approximate and for general guidance purposes only and whilst every care has been taken to ensure accuracy, they should not be relied upon and potential buyers/tenants are advised to recheck the measurements.