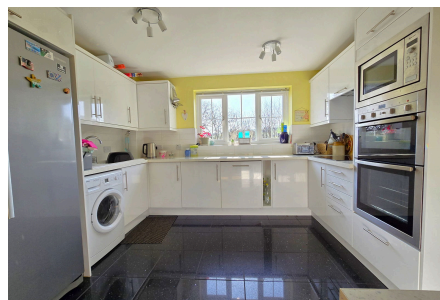


14 Gallacher Way, Latchbrook

Guide Price £420,000

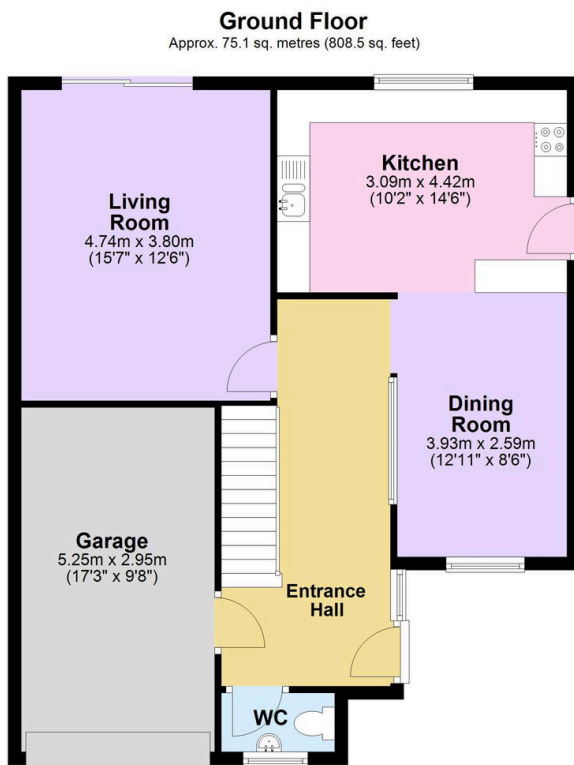
4 3 2



A welcoming and generous entrance hall sets the tone, leading to a convenient downstairs WC and a light-filled kitchen/diner. The kitchen is both stylish and practical, with delightful views over Latchbrook Farm. The living room is particularly impressive — a sun-drenched space with patio doors opening directly onto the rear patio, seamlessly connecting indoor and outdoor living. Steps lead down to the south-facing garden, designed for ease of maintenance and ideal for relaxing or entertaining. The garden also benefits from a large summer house, offering excellent flexibility as a home office. Upstairs, four double bedrooms, three of which benefit from built-in storage. The main bedroom enjoys a modern en-suite shower room with underfloor heating, while the family bathroom also features underfloor heating.

Key Features

- Freehold - Council Tax Band E - EPC D
- Peaceful cul-de-sac setting on the sought-after Latchbrook estate.
- Light-filled living room with patio doors
- Modern en-suite & bathroom with underfloor heating
- Close to beautiful walks & easy access to Burraton Primary School and local bus links.
- Spacious four double bedroom detached home
- Stylish kitchen/diner
- Low-maintenance south-facing garden with large, versatile summer house.
- Integral garage with electric door plus double driveway parking.
- Quote BH0675 to book your viewing today



Total area: approx. 134.2 sq. metres (1444.3 sq. feet)