



## Needleman Close, NW9

£2,200 Per calendar month

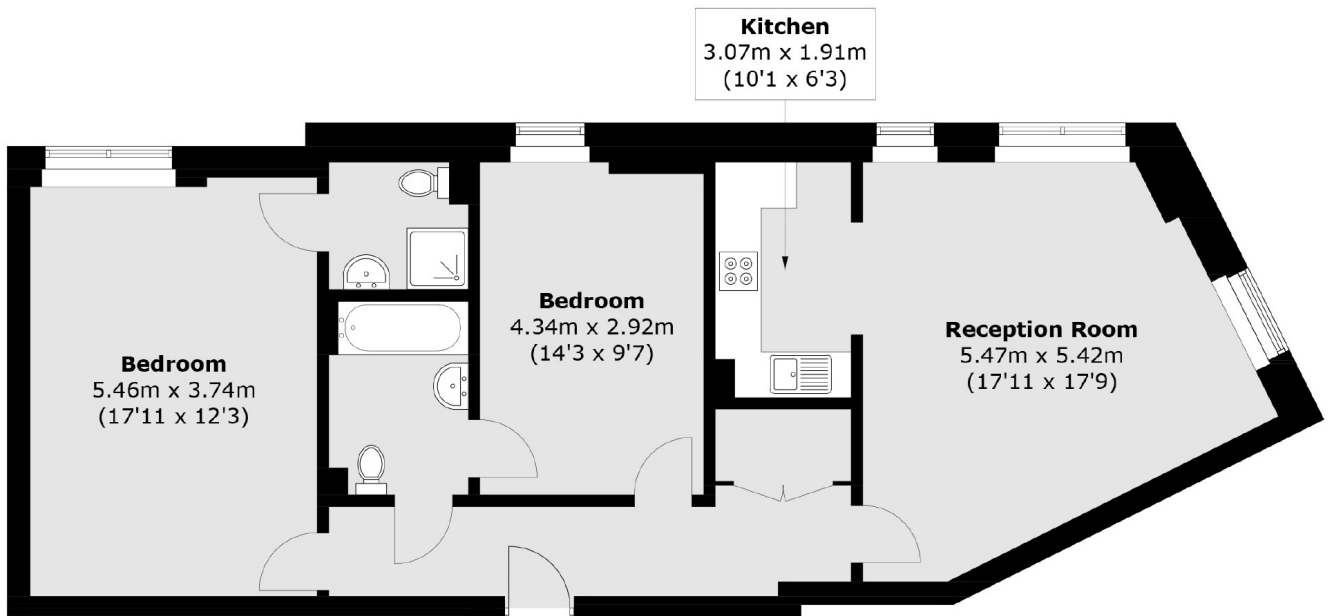
A spacious two bedroom ground floor flat in a modern new build apartment. The property boasts a large living room, two bathrooms, two double bedrooms and excellent storage.

The development is walking distance to Colindale station with excellent amenities nearby including a Sainsbury's and PureGym.

### Features

- Spacious Rooms
- Great Location
- Two Bedrooms
- Modern
- Storage
- Ground Floor

# Needleman Close, London, NW9



Total area (approx.): 82.4 sq. m (886.9 sq. ft)