



TURNPIN LANE, SE10

£2,000 per month

Duplex conversion flat
Own front door
Two double bedrooms
Separate fitted kitchen
Next to Greenwich market
Energy rating: d



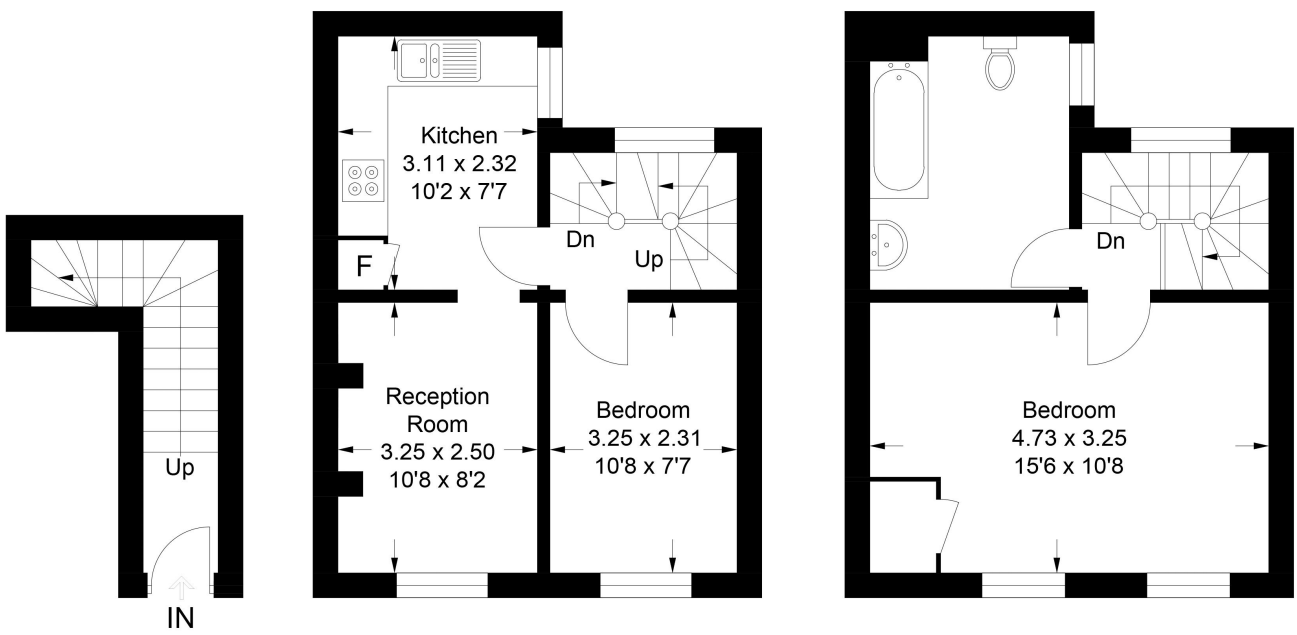
ABOUT THE PROPERTY

A well presented duplex conversion flat, occupying the first and second floor and situated just off Greenwich Market. The property features its own front door, for that sense of privacy. The interior comprises two double bedrooms, a modern bathroom suite with fitted shower, good size lounge diner and a separate fully fitted kitchen which includes main appliances (includes washing machine, fridge freezer and cooker with gas hob). Further benefits include a mixture of wood floors and fitted carpets, gas central heating and is offered unfurnished.

Cutty Sark DLR station is just a few minutes walk away, and nearest supermarkets include Waitrose, Marks & Spencer and Tesco express to name a few.



STEP INSIDE TURNPIN LANE



Ground Floor

First Floor

Second Floor



Approximate Gross Internal Area
 Ground Floor = 4.8 sq m / 52 sq ft
 First Floor = 27.6 sq m / 297 sq ft
 Second Floor = 27.6 sq m / 297 sq ft
 Total = 60 sq m / 646 sq ft

Greenwich
 020 8815 2230

Energy Rating: D We aim to make our particulars both accurate and reliable. However, they are not guaranteed; nor do they form part of an offer or contract. If you require clarification on any points then please contact us, especially if you're traveling some distance to view. Please note that appliances and heating systems have not been tested and therefore no warranties can be given as to their good working order

**MARSH &
 PARSONS**