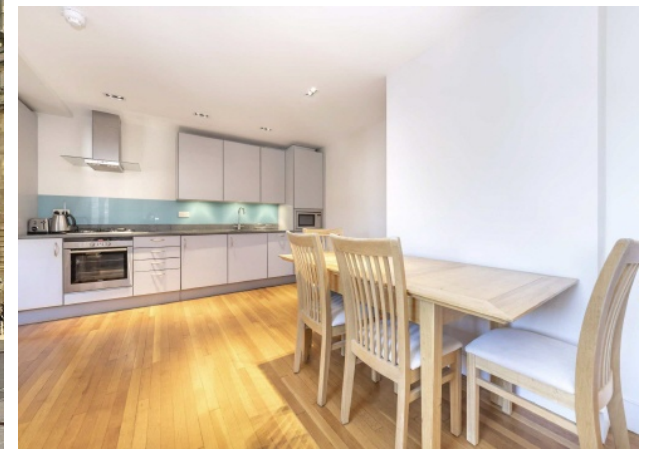


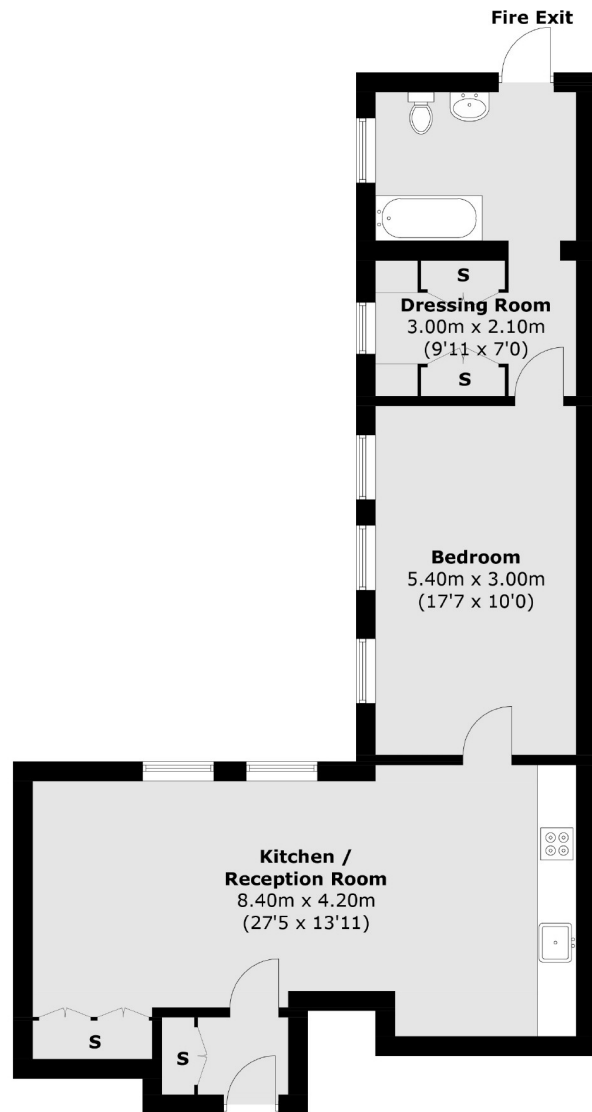


ALBEMARLE STREET

MAYFAIR W1S



A CONTEMPORARY APARTMENT SITUATED IN AN IMPRESSIVE GEORGIAN BUILDING IN THE HEART OF MAYFAIR CLOSE TO GREEN PARK.



Fourth Floor



A contemporary apartment situated in an impressive Georgian building in the heart of Mayfair close to Green Park. Albemarle Street is ideally located for Green Park tube station on the Piccadilly, Victoria and Jubilee lines. Piccadilly Circus and the amenities and attractions of the West End are close by.

FEATURES

- Spacious Double Bedroom
- Lutron Lighting
- Wooden Flooring
- Fully Furnished
- Great Storage
- Excellent Location

Price: £750 Per week



WETHERELL
MAYFAIR'S FINEST PROPERTIES

102 Mount Street • London • W1K 2TH
T: 020 7529 5588 E: rentals@wetherell.co.uk
wetherell.co.uk

We aim to make our particulars both accurate and reliable. However they are not guaranteed; nor do they form part of an offer or contract. If you require clarification on any points then please contact us, especially if you're traveling some distance to view. Please note that appliances and heating systems have not been tested and therefore no warranties can be given as to their working order. Energy Rating: D

NO ONE KNOWS MAYFAIR BETTER THAN WETHERELL