

martin-thornton.com
01484 508000



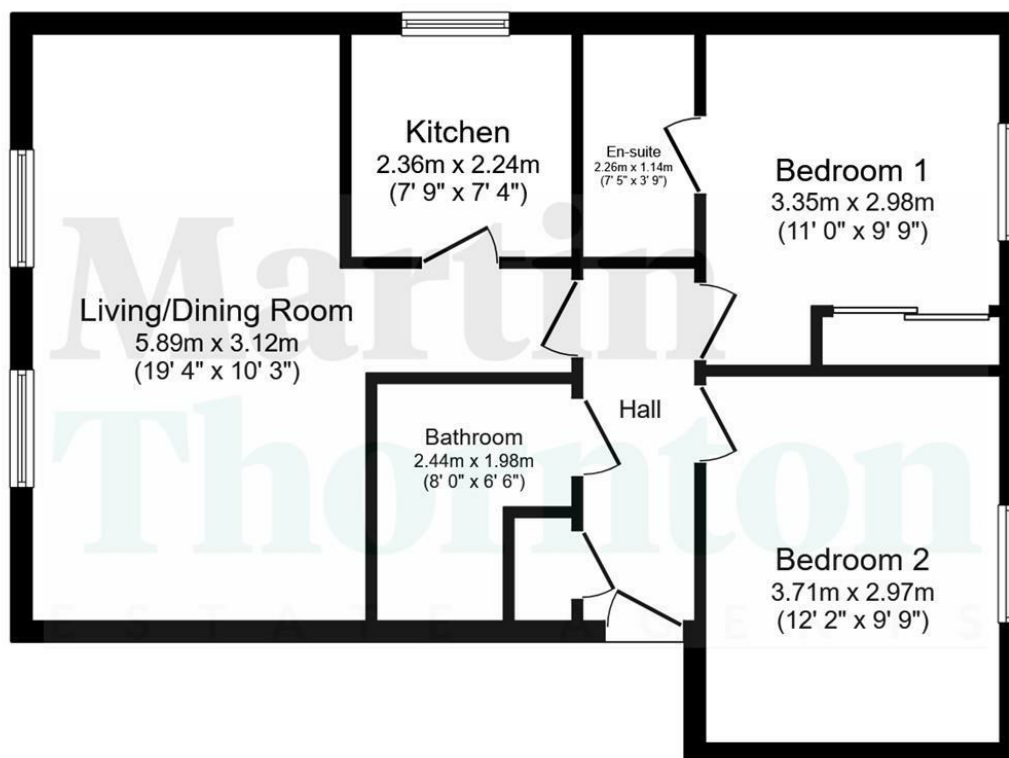
Plover Mills, Lindley Huddersfield,

Offers over £140,000

Located within walking distance of Lindley Village with its various bars and restaurants is this two double bedroom third floor apartment. The property may prove suitable for a professional couple looking to access the nearby M62 motorway networks, or first time buyers. The accommodation comprises a communal entrance with intercom system, entrance hallway with storage, kitchen, living diner, two double bedrooms, en suite shower room and bathroom. New carpets have been recently fitted. The property benefits from a gas-fired central heating system and uPVC double-glazing. Externally, there is an allocated parking space, visitor parking, a communal garden and a children's play area.

**Plover Mills, Lindley
Huddersfield,**

Floorplan



Floor Plan

Floor area 61.7 sq.m. (664 sq.ft.)

Total floor area: 61.7 sq.m. (664 sq.ft.)

This floor plan is for illustrative purposes only. It is not drawn to scale. Any measurements, floor areas (including any total floor area), openings and orientations are approximate. No details are guaranteed, they cannot be relied upon for any purpose and do not form any part of any agreement. No liability is taken for any error, omission or misstatement. A party must rely upon its own inspection(s). Powered by www.Propertybox.io

Plover Mills, Lindley Huddersfield,

Details

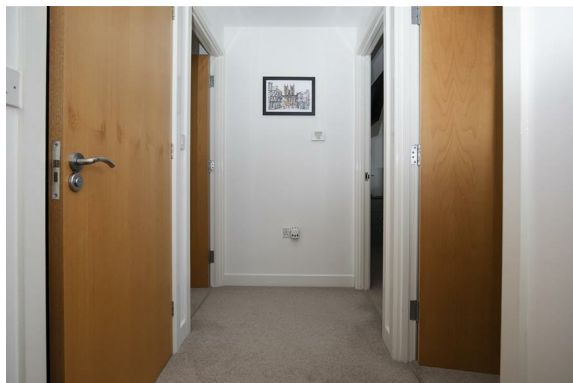


Communal Entrance

An intercom telephone system provides access to the communal entrance and steps lead up to the third floor, where the apartment can be found.

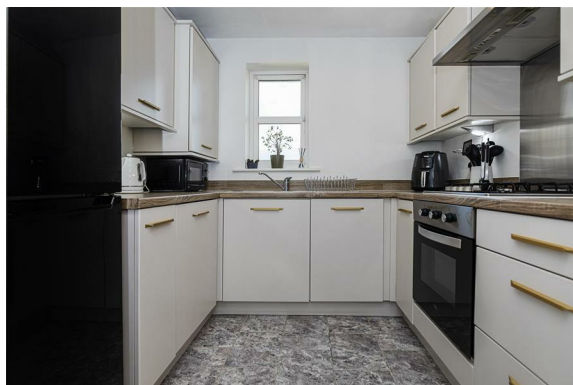
Entrance Hallway

A timber door opens into the entrance hallway, where there is a ceiling light point, a radiator, hanging hooks for coat storage and a telephone intercom system. There is a useful, shelved storage cupboard and a timber door leading to the following rooms:



Kitchen

The kitchen has a range of wall units, base cupboards, drawers, roll-edge worktops with matching upstands and a one-and-a-half bowl stainless steel sink unit. Integrated appliances include an oven and a four-ring gas hob with a canopy style filter hood, plus an integrated washer/dryer. There is space for a freestanding fridge freezer. This area is home to the Potterton Combi central heating boiler. It has a uPVC window to the rear elevation, ceiling downlighting, tiling to the floor and a doorway leading through to the living/diner.



Plover Mills, Lindley Huddersfield,

Details



Living Diner

This open-plan room has two uPVC double-glazed windows, allowing natural light from the rear elevation. There is plenty of space for furniture, along with two radiators and two ceiling light points.



Bedroom One

This double bedroom is positioned at the front of the property and has a uPVC double-glazed window, a ceiling light point and a radiator. It has fitted wardrobes with sliding doors, hanging rails and shelving. Being the master bedroom, it has the advantage of an en suite shower room.



Plover Mills, Lindley Huddersfield,

Details



En Suite Shower Room

The modern white suite comprises a shower cubicle with a glass panelled door, home to a mains fed shower, a pedestal wash hand basin with and a low-level WC. The room is fitted vinyl style flooring, appropriate tiling to the walls and a vanity storage cupboard with a mirror and shelving. There is ceiling downlighting, an extractor fan, a shaver point and a radiator.



Bedroom Two

This double bedroom has a uPVC double-glazed window, plenty of space for furniture, a ceiling light point and a radiator.



Plover Mills, Lindley Huddersfield,

Details



Bathroom

The white suite comprises a panelled bath with a mixer tap rising to a shower head, a pedestal wash hand basin and a low-level WC. The room has recently been fitted with new vinyl style flooring, appropriate tiling to the walls, a ceiling light point, an extractor fan and a radiator.



External Details

There is an allocated parking space, along with visitor parking, a communal garden and a children's play area.



Tenure

The vendor has informed us that this is a Leasehold property.

Plover Mills, Lindley Huddersfield, Directions

