

TO
LET

£1,050 PCM

Queens Road, Portsmouth, PO2 7NX



HIGHLIGHTS

- ❖ LUXURY APARTMENT
- ❖ OFF ROAD PARKING
- ❖ ONE DOUBLE BEDROOM
- ❖ FIRST FLOOR
- ❖ 16FT KITCHEN/LOUNGE/DINER
- ❖ GAS CENTRAL HEATING
- ❖ MODERN BATHROOM
- ❖ AVAILABLE EARLY SEPTEMBER
- ❖ CENTRAL LOCATION
- ❖ A MUST VIEW

***** ONE BED APARTMENT WITH PARKING *****

Bernard's Portsmouth are delighted to welcome to the rental market, these, beautifully designed and spacious apartments with off road parking, in the sought after and central location of North End.

The apartment comprises of large open plan living space incorporating a modern high gloss fitted kitchen, which is flooded with natural light.

The property's bedroom is double in size and is bright and airy. Completing the property is the modern three-piece bathroom, which acts as the perfect space to unwind.

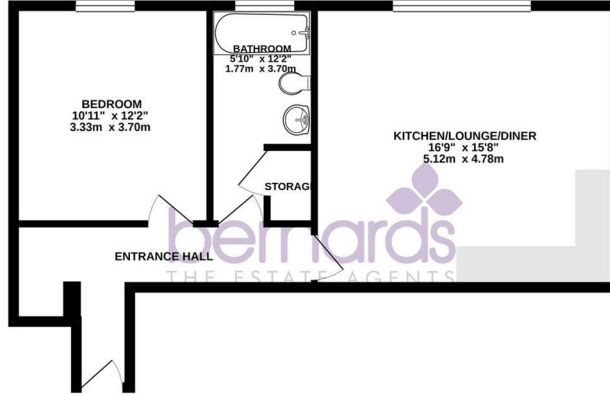
Further highlights include gas central heating, allocated parking and being newly recently built, it has been decorated to a contemporary standard with new electrics and double glazed windows

Offered unfurnished and available in September, we strongly recommend booking an early viewing to avoid disappointment

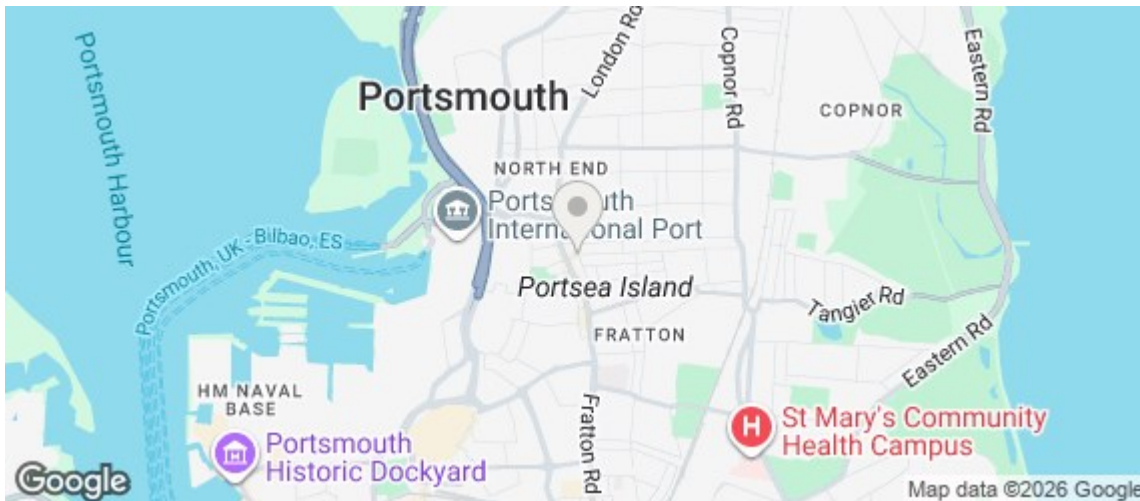




1ST FLOOR
547 sq.ft. (50.8 sq.m.) approx.



TOTAL FLOOR AREA: 547 sq.ft. (50.8 sq.m.) approx.
While every attempt has been made to ensure the accuracy of the floorplan contained herein, measurements of walls, windows, doors and any other items are approximate and the responsibility is taken for any minor deviation or error. This plan is for illustrative purposes only and should be used as such by any prospective purchaser. The services, systems and appliances shown have not been inspected and the accuracy of their location, condition or operation is not guaranteed.
 Made with Metaplex 02/20



Energy Efficiency Rating		
	Current	Potential
Very energy efficient - lower running costs		
(92 plus) A		
(81-91) B		
(69-80) C	80	80
(55-68) D		
(39-54) E		
(21-38) F		
(1-20) G		
Not energy efficient - higher running costs		
England & Wales EU Directive 2002/91/EC		

