



Benn Street, E9

£4,700 Per calendar month

A stunning three bedroom, three storey Victorian end of terrace with private garden. This double fronted house has a large open plan kitchen dining room, feature fireplace, sash windows, wooden floors and bespoke joinery throughout with off street parking.

Benn Street is a quiet residential street around the corner from Victoria Park. It is half a mile from Homerton Overground Station and Chatsworth Road market with its many shops, cafes and Sunday Market.

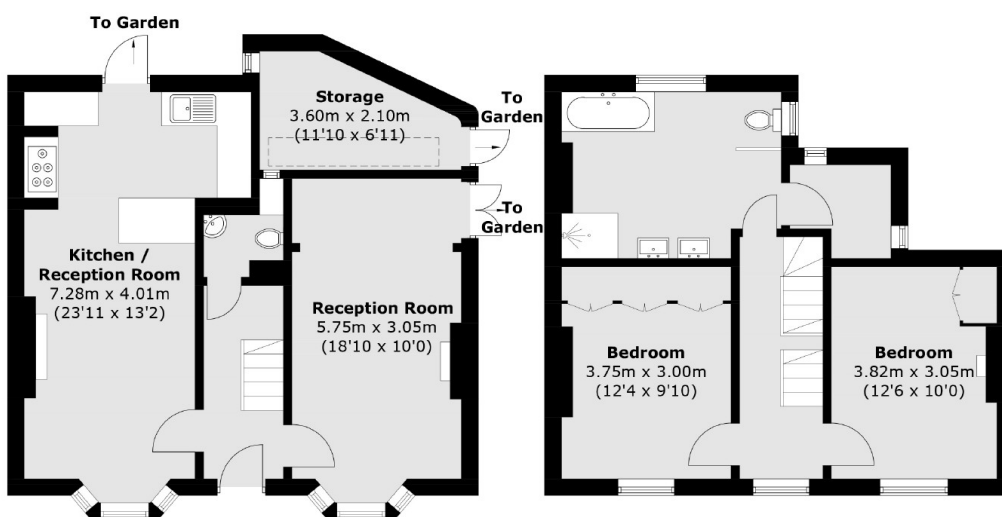
Features

- Three Double Bedrooms
- Two Bathrooms
- Victorian End Of Terrace
- Garden
- Loft Extension
- Victoria Park

Benn Street, London, E9



Second Floor



Ground Floor

First Floor

Total area (approx.): 129.2 sq. m (1,390.4 sq. ft)
(Excluding Eaves Storage)