

16 Moor Park, Abergele, LL22 7UA

£199,950

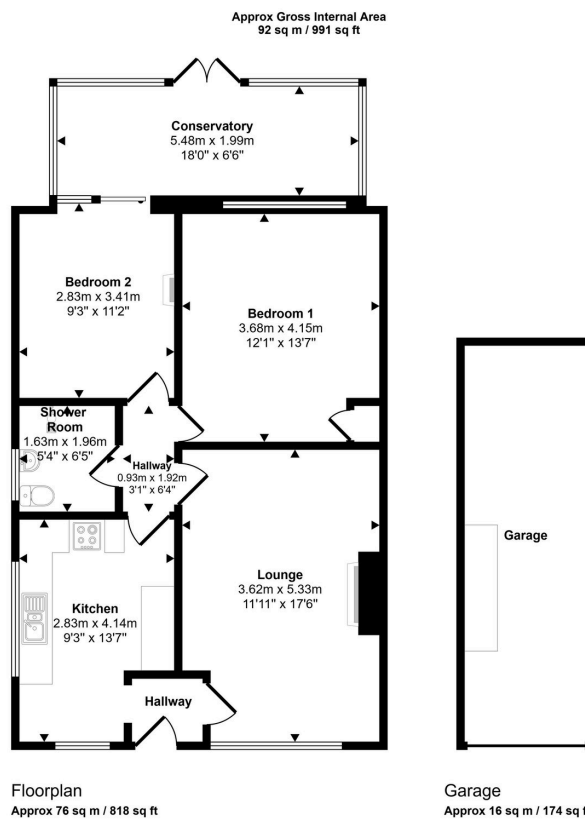
2 1 1



With no forward chain, this semi-detached bungalow comprises of Two bedrooms, spacious lounge, bright kitchen, wet room, conservatory and a garage. With a fully enclosed rear garden and driveway parking. This property is situated in a quiet cul de sac in the popular coastal town of Abergele close to all local amenities and within minutes walk to the high street.

Key Features

- No Forward Chain
- Semi-detached bungalow
- cul de sac location
- Two bedrooms
- Large conservatory
- Driveway perfect for off-street parking
- Single garage
- Close to the local town
- EPC - TBC
- Council Tax - C



This floorplan is only for illustrative purposes and is not to scale. Measurements of rooms, doors, windows, and any items are approximate and no responsibility is taken for any error, omission or mis-statement. Icons of items such as bathroom suites are representations only and may not look like the real items. Made with Made Snappy 360.