


## 6 Ffordd Las, Rhyl, Denbighshire, LL18 2DY

Offers In Region Of £150,000

 3  1  1

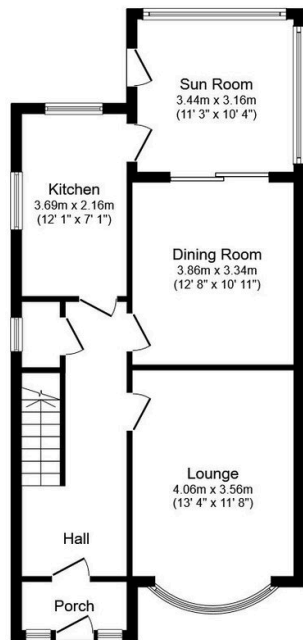


This three-bedroom semi-detached house offers an excellent opportunity for first-time buyers, families and investors. The property requires modernisation, providing scope for buyers to update and personalise to their own taste. The accommodation includes kitchen, lounge, dining room and sun room, creating a bright space that connects well with the outdoor areas. Two double bedrooms and one single bedroom, with shower room to first floor. Externally, the property benefits from parking and a lovely garden with a quaint Summerhouse. The house is well positioned for Rhyl's main town centre with it's shops and services, as well as supermarkets and everyday conveniences. Nearby schools serve the local community, making this a practical location for families. Rhyl railway station provides rail links along the North Wales coast and beyond.

# PETER LARGE

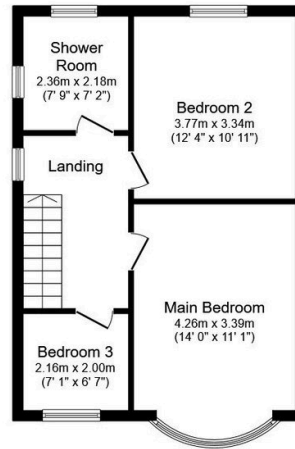
ESTATE AGENTS

- Three-bedroom semi-detached house
- Requires modernisation
- Off street parking
- Close to Rhyl town and schools
- Freehold / EPC - F / Council tax - B
- Ideal for variety of buyers
- Bright Sun Room
- Lovely Gardens
- Probate Sale
- Date - 28/05/2026



Ground Floor

Floor area 63.4 sq.m. (683 sq.ft.)



First Floor

Floor area 46.8 sq.m. (504 sq.ft.)

Total floor area: 110.2 sq.m. (1,187 sq.ft.)

This floor plan is for illustrative purposes only. It is not drawn to scale. Any measurements, floor areas (including any total floor area), openings and orientations are approximate. No details are guaranteed, they cannot be relied upon for any purpose and do not form any part of any agreement. No liability is taken for any error, omission or misstatement. A party must rely upon its own inspection(s). Powered by [www.Propertybox.io](http://www.Propertybox.io)

## CONSUMER PROTECTION REGULATIONS 2008 AND THE BUSINESS PROTECTION FROM MISLEADING MARKETING REGULATIONS 2008

These particulars, whilst believed to be accurate, are set out for guidance only and do not constitute any part of an offer or contract. Prospective purchasers or tenants should not rely on these particulars as statement or representation of fact, but must satisfy themselves by inspection or otherwise as to their accuracy. No person in the employment of PETER LARGE Estate Agents has the authority to make or give any representation or warranty in relation to the property. Room sizes are approximate and all comments are of the opinion of PETER LARGE Estate agents having carried out a walk through inspection. These sales particulars are prepared under the consumer regulations 2008 and are governed by the business from misleading marketing regulations 2008.