



£565,000

Sladebrook Road, Kidbrooke, SE3 8LT

Chattertons

EST 1893

A stunning house with 1304 square feet of space presented in show home condition. This property is perfect for a family and has been extended and refurbished to such a high standard. The accommodation includes a large dual aspect lounge, lovely kitchen diner with dramatic ceiling, 3 double bedrooms, 2 bathrooms and ground floor cloakroom. The house has such a great feeling of space and is finished in light neutral colours creating a clean contemporary scandinavian finish. To the rear is a beautiful garden and to the front is a driveway with space for 2 cars side by side. Located 0.9 miles to Kidbrooke mainline station which provides zone 3 access into London. Offered to the market chain free.



**Stunning semi detached house**  
**Show home condition**  
**Contemporary scandinavian finish**  
**1304 square feet of space**  
**3 double bedrooms**

**Entrance porch**

Window to side, solid wood flooring

**Entrance hall**

Solid wood flooring, under stairs storage cupboard, utility cupboard

**Dual aspect lounge 23' 6" x 12' 0" (7.16m x 3.65m)**

Double glazed window to the rear and double glazed window to the front, solid wood flooring 2 radiators, generous living and dining space

**Kitchen diner 16' 5" x 15' 6" (5.00m x 4.72m)**

Dramatic vaulted ceiling, double glazed window to the rear and double glazed door to side and rear, fitted wall and base units with granite work surface, sink unit with mixer taps and integrated dishwasher, double oven and hob, tiled floor, 2 designer radiators

**Cloakroom**

Low level wc, wash hand basin with mixer taps

**Bedroom 3 16' 5" x 9' 4" (5.00m x 2.84m)**

Double glazed window, radiator, wood flooring

**En suite**

Velux window, shower, low level wc, wash hand basin with vanity below and mixer taps, chrome heated towel rail, tiled walls and floor

**2 bathrooms**  
**Lovely kitchen with dramatic ceiling**  
**Dual aspect lounge**  
**Ground floor cloakroom**  
**Beautiful garden and driveway to the front**

**Stairs to the first floor**

Double glazed window to side

**Bedroom 1 18' 7" x 12' 11" (5.66m x 3.93m)**

2 double glazed windows, wardrobe, radiator, carpet

**Bedroom 2 12' 7" x 10' 2" (3.83m x 3.10m)**

Double glazed window, radiator, carpet, built in wardrobes

**Bathroom**

Double glazed window, radiator, carpet, built in wardrobes

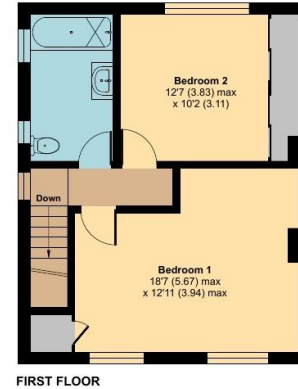
**Rear garden**

Laid to lawn with plants and flowers, pond, decked area, outside tap and lights

**Driveway**

With parking for 2 cars side by side





## Sladebrook Road, London, SE3

Approximate Area = 1304 sq ft / 121.1 sq m

For identification only - Not to scale



Floor plan produced in accordance with RICS Property Measurement 2nd Edition, Incorporating International Property Measurement Standards (IPMS2 Residential). © nichecom 2025. Produced for Chattertons Estate Agents Ltd. REF: 1331890

All dimensions are approximate and are quoted for guidance only, their accuracy cannot be confirmed. Reference to appliances and/or services does not imply they are necessarily in working order or fit for the purpose. Buyers are advised to obtain verification from their solicitors as to the freehold/leasehold status of the property, the position regarding any fixtures and fittings and where the property has been extended / converted as to Planning approval and Building Regulation compliance. These particulars do not constitute or form part of an offer or contract, nor may they be regarded as representations. All interested parties must themselves verify their accuracy. Where a room layout is included this is for general guidance only, it is not to scale and its accuracy cannot be confirmed. Ref Code:

**020 8859 4000**

405 Footscray Road  
New Eltham SE9 3UL

[sales.neweltham@chattertons.org.uk](mailto:sales.neweltham@chattertons.org.uk)

# Chattertons

EST 1893