



Park Road, TW3

£2,495 Per calendar month

Offering over 1,300 square feet of modern living space, this attractive three bedroom family home features two reception rooms, a contemporary kitchen, one bathroom, additional W/C, generous private garden, and bright, well proportioned interiors throughout.

Ideally situated on a sought-after road, moments from Hounslow Station, local bus routes, shops, highly rated schools, and convenient access to Whitton, Isleworth, St Margarets, Twickenham, and the A316.

Features

- Semi- Detached House
- Three Bedrooms
- Through Lounge
- Modern Bathroom
- Separate Kitchen
- Private Garden



Park Road, TW3

Beautifully presented and extending beyond 1,300 square feet, this modern three bedroom family home offers bright interiors, a entrance porch, and two spacious reception rooms, ideal for entertaining guests, evenings with family, or versatile living.

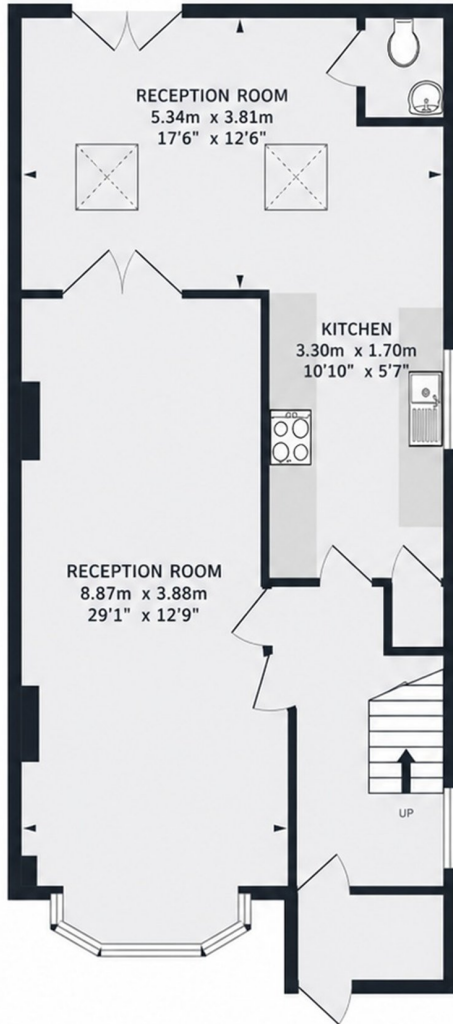
The contemporary kitchen features extensive cabinetry, integrated cooking appliances, and generous preparation space, flowing seamlessly into a bright dining area with skylight and garden access. Neutral décor, wood flooring, and large windows enhance the space.

Upstairs comprises three well proportioned bedrooms, including fitted wardrobes within the principal room, alongside a modern family bathroom and additional W/C. Outside, the private rear garden provides excellent space, complete with seating areas and shed



Park Road, Hounslow, TW3

GROUND FLOOR



1ST FLOOR

