



**BEAUCHAMP
ESTATES**

Lancaster Terrace

BAYSWATER





Exceptional penthouse with terrace, lift, parking, Hyde Park views

 5  3

Exterior

This exceptional top-floor penthouse in a portered block with a lift enjoys outstanding views across the Italian Gardens in Hyde Park. The property benefits from private allocated parking and one of the finest roof terraces in the area, offering a rare and expansive outdoor space. Positioned on the uppermost floor, the apartment is flooded with natural light throughout.

Highlights

- Exceptional views
- Roof Terrace
- Excellent location
- Lateral penthouse apartment





Interiors

The apartment is presented in need of modernisation, offering significant potential to create a superb lateral residence. Currently arranged as five bedrooms, the layout provides generous proportions and flexibility, ideal for reconfiguration into a high-quality, contemporary home.

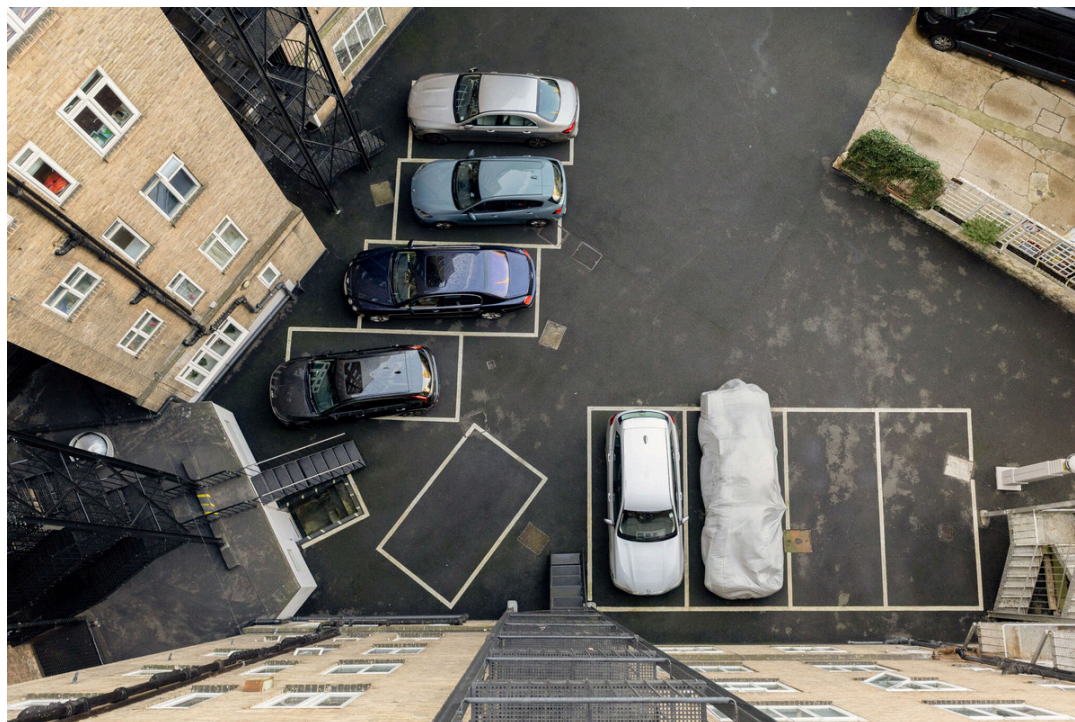


Features

- 24/7 Concierge
- Allocated Parking
- Balcony
- Lift

Location

Located in the increasingly sought-after and evolving neighbourhood of Bayswater, the property is moments from Hyde Park and its open green spaces. It is within close proximity to the Six Senses European flagship hotel and benefits from the ongoing regeneration of Queensway, which continues to attract significant investment and is fast becoming one of central London's most exciting growth locations.



Terms

Price: £3,500,000

Tenure: Leasehold, 94 years remaining

Ground Rent:

Service Charge: £19,800.00

Local Authority: Westminster

Council Tax: H

Energy Efficiency Rating		Environmental Impact (CO ₂) Rating	
Current	Potential	Current	Potential
<p>Energy Efficiency Rating</p> <p>Very energy efficient - lower running costs</p> <p>(92+) A</p> <p>(81-91) B</p> <p>(69-80) C</p> <p>(55-68) D</p> <p>(39-54) E</p> <p>(21-38) F</p> <p>(1-20) G</p> <p>Not energy efficient - higher running costs</p> <p>England, Scotland & Wales</p>			
70	77	<p>Environmental Impact (CO₂) Rating</p> <p>Very environmentally friendly - lower CO₂ emissions</p> <p>(92+) A</p> <p>(81-91) B</p> <p>(69-80) C</p> <p>(55-68) D</p> <p>(39-54) E</p> <p>(21-38) F</p> <p>(1-20) G</p> <p>Not environmentally friendly - higher CO₂ emissions</p> <p>England, Scotland & Wales</p>	
		66	74

Beauchamp Estates, their clients and any joint agents give notice that: 1. They are not authorised to make or give any representation or warranties in relation to the property either here or elsewhere, either on their own behalf or on behalf of their client or otherwise. They assume no responsibility for any statement that may be made in these particulars. These particulars do not form part of any offer or contract and must not be relied upon as statements or representations of fact. 2. Any Areas, measurements or distances are approximate. The text photographs and plans are for guidance only and are not necessarily comprehensive. It should not be assumed that the property has all necessary planning, building regulation or other consents and Beauchamp Estates have not tested any services, equipment or facilities. Purchasers must satisfy themselves by inspection or otherwise.

Approximate Floor Area = 226.6 sq m / 2439 sq ft (Excluding Parking Space)



Seventh Floor



This floor plan has been drawn in accordance with RICS Property Measurement 2nd edition. All measurements, including the floor area, are approximate and for illustrative purposes only. @fourwalls-group.com #102135



**BEAUCHAMP
ESTATES**

Beauchamp Estates - Mayfair

24 Curzon Street,
London, W1J 7TF

020 7499 7722

londoninformation@beauchampestates.com

www.beauchampestates.com