







21 Westmoor Road

Brimington • Chesterfield • S43 1PT

£425,000

This superb and beautifully extended three-double-bedroom detached bungalow offers spacious, modern ground-floor living in the heart of Brimington. The location provides excellent transport connections, with straightforward routes into Chesterfield town centre, the train station, and onward links to the M1. Regular bus services, close proximity to Chesterfield Royal Hospital, nearby parks and walking routes, and access to well-served local schools and amenities make this an ideal home for families and those seeking contemporary single-level living. The front door opens into the hallway, leading to the impressive extended open-plan kitchen, living, and dining space positioned at the rear of the property with underfloor heating. The kitchen features sleek gloss cabinetry, generous storage, integrated appliances, and a wine rack, along with a central island offering breakfast-bar seating. The dining area comfortably accommodates a family table and includes two side doors opening onto the garden. To the rear, bi-fold doors and a skylight flood the space with natural light. The living area continues the modern feel, complete with a stylish media-wall effect and panelled detailing. From here, a door leads into a separate utility room, providing valuable additional workspace and storage. Returning to the hallway, the first left leads to the main bedroom featuring a bay window, a spacious front-facing double with its own contemporary, three-piece en-suite, including a shower cubicle, sink, and WC. The second double bedroom is also positioned at the front, as well as having a modern three-piece shower room with shower cubicle, sink, and WC. The third double bedroom is located further along the hall, overlooking the side of the property. The hallway also provides access to a useful WC and additional built-in storage. Outside, the property boasts a large, level lawned rear garden, fully enclosed and private. A generous initial patio seating area leads onto the lawn, offering excellent outdoor space for families and entertaining. To the front, the property benefits from driveway parking for multiple vehicles.





- Three Double Bedroom Detached Bungalow
- Extended & Beautifully Presented Throughout
- Fully Modernised Open Plan Kitchen Living Space
- Integrated Appliances, Central Island w/ Breakfast Bar
- Media Wall Lounge & Practical Utility Room
- Three Double Sized Bedrooms
- Two Modern Shower Room Ensuites & WC
- Large Enclosed Rear Garden & Patio
- Off Street Driveway Parking
- Council Tax Band C/EPC Rating C





21 WESTMOOR ROAD

APPROXIMATE GROSS INTERNAL AREA = 127.2 SQ M / 1369.7 SQ FT

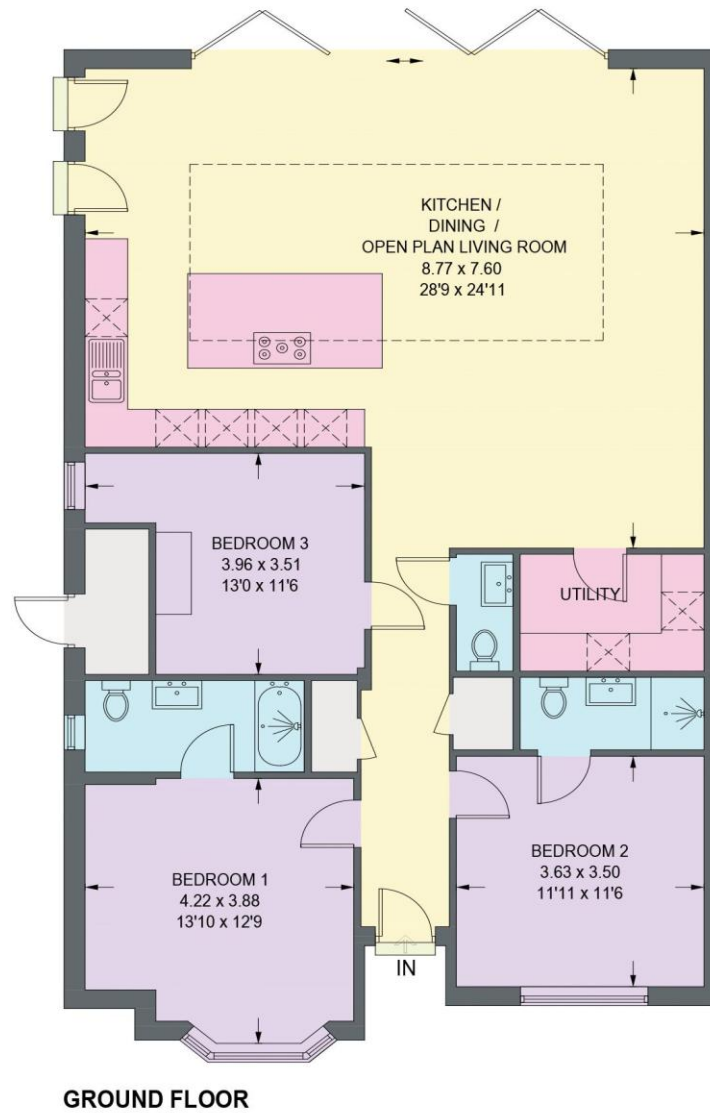


Illustration for identification purposes only, measurements are approximate, not to scale. (ID1289252)



haus

31 West Bars, Chesterfield, S40 1AG
chesterfield@haushomes.co.uk haushomes.co.uk

01246 380 535