



Brondesbury Park, NW6

£425,000

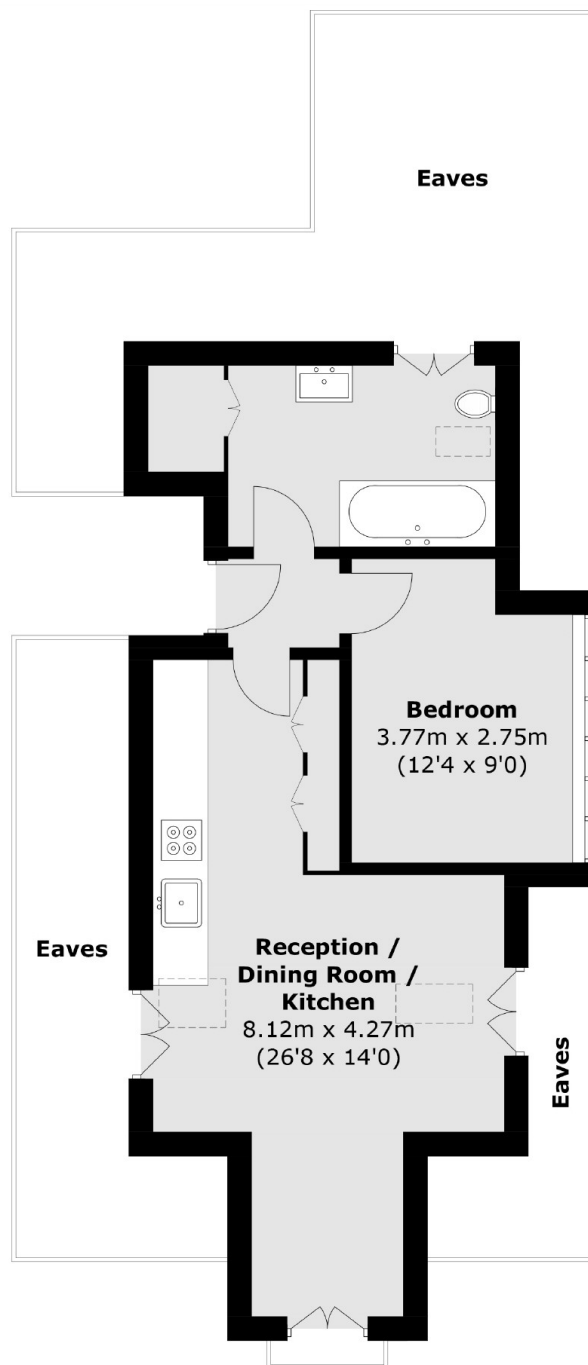
Part of a luxury boutique conversion, this is a bright one-bedroom flat with multiple skylights and an enormous storage area split into three eaves. The size of the flat is approximately 500sqf, which increases to 910sqf including all the eaves storage. The property is situated on the second (top) floor, with a south-facing communal garden.

Brondesbury Park is very well located between Willesden Green and Queens Park, with the choice of Willesden Green High Road, Salusbury Road and Kilburn High Road with the variety of shops, bars, restaurants and multiple transport links.

Features

- One Bedroom
- Second Floor Flat
- One Bathroom & Storage
- Open Plan Kitchen & Reception
- Communal Garden
- First Come First Serve Parking

Brondesbury Park, London, NW6



Total area (approx.): 46.6 sq. m (501.6 sq. ft)
(Excluding Eaves)

Dexters

Kensal Rise & Queen's Park
62 Chamberlayne Road
London
NW10 3JJ

Sales
020 8600 3100

Energy Rating: B. We aim to make our particulars both accurate and reliable. However they are not guaranteed; nor do they form part of an offer or contract. If you require clarification on any points then please contact us, especially if you're traveling some distance to view. Please note that appliances and heating systems have not been tested and therefore no warranties can be given as to their good working order.

 **RICS** | Regulated
Estate Agent
and Letting Agent

[dexters.co.uk](https://www.dexters.co.uk)