

Earith Road, Colne, Huntingdon, PE28 3NJ

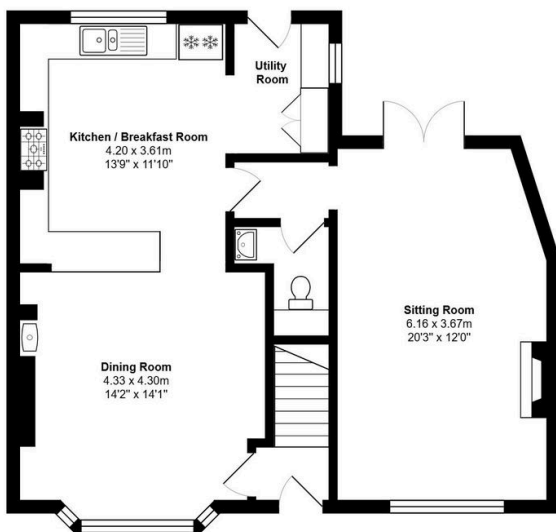
Offers Over £375,000

4 2 2

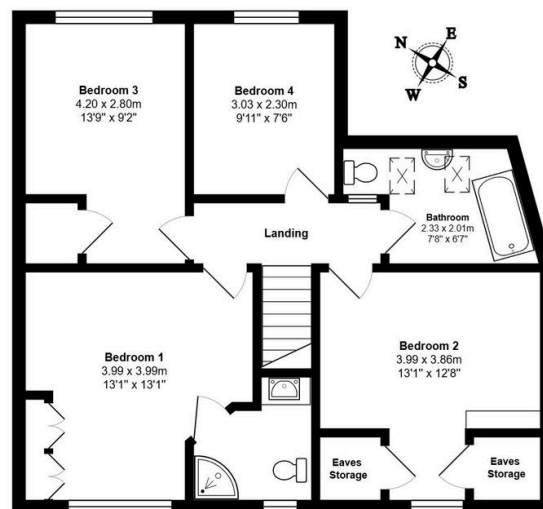


- 4 bedroom semi detached home with double-storey extension
- Useful utility room keeping practicality neatly tucked away
- Large, private rear garden beautifully maintained throughout
- Open paddock aspect to the side – lovely rural feel
- Virtual tour available upon request
- Stunning open-plan kitchen/breakfast room and dining room
- Generous sitting room with space for the whole family
- Off-road parking to the front of the property
- Substantial 1,464 sq ft of living accommodation
- EPC Rating D/69

**Ground Floor**  
Area: 69.1 m<sup>2</sup> ... 743 ft<sup>2</sup>



**First Floor**  
Area: 67.0 m<sup>2</sup> ... 721 ft<sup>2</sup>



Total Area: 136.0 m<sup>2</sup> ... 1464 ft<sup>2</sup>  
All measurements are approximate and for display purposes only

A beautifully extended four-bedroom semi that blends character features with a seriously impressive kitchen – and a garden that just keeps going!