



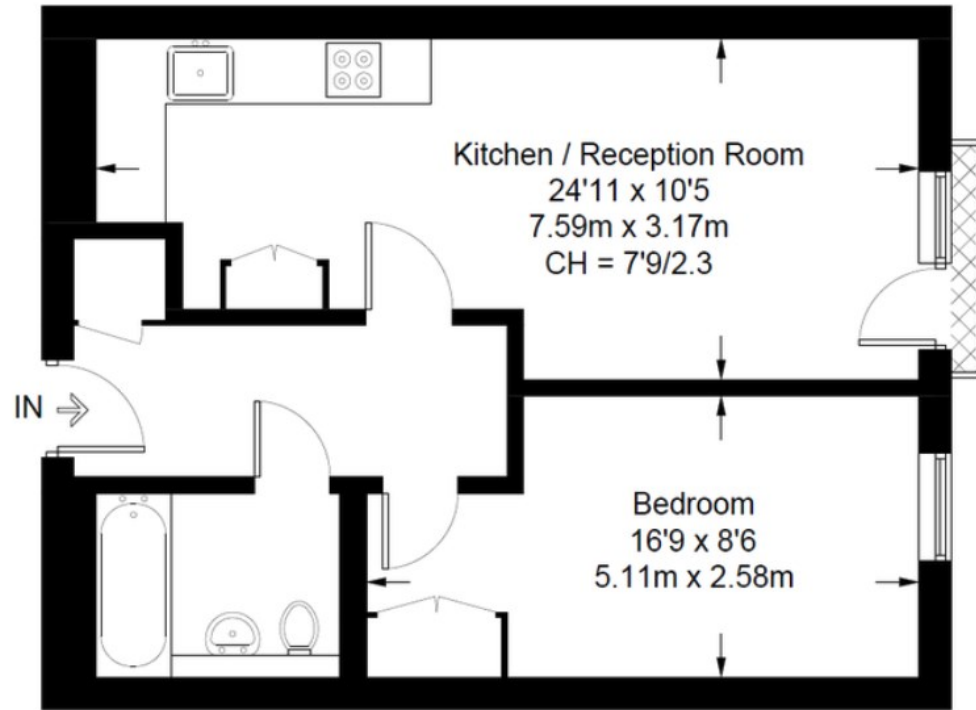
Wood House, Grosvenor Waterside, Gatliff Road SW1W 8DF

£450,000

- 1 bedroom
- 1 bathroom
- 1 reception room
- west facing
- moments away from Sloane Square and Victoria stations
- walking distance to Battersea Park

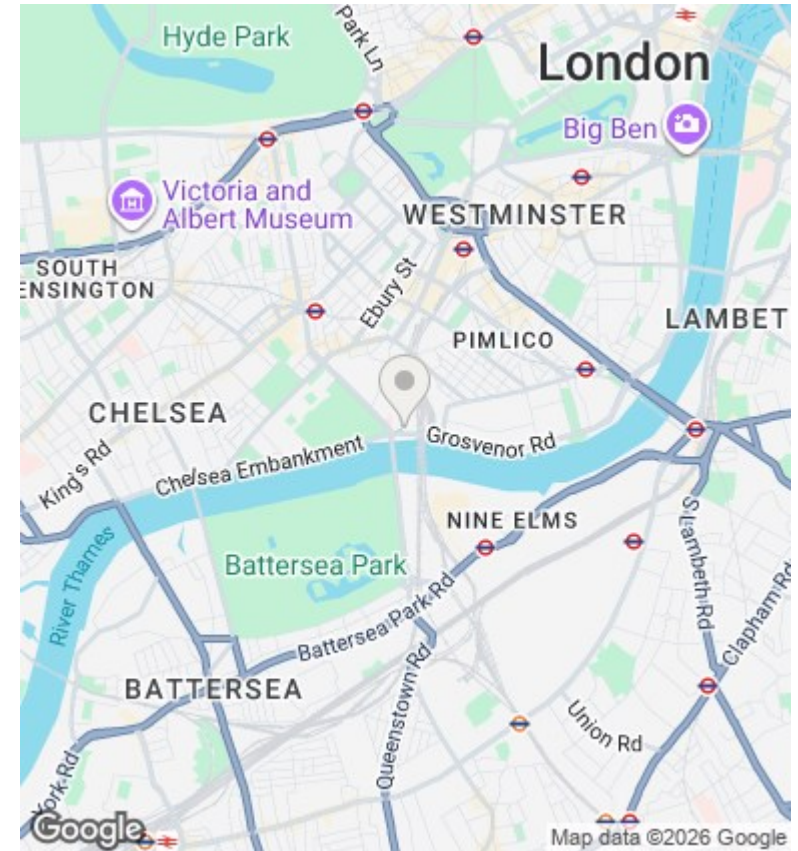
Woods House

Approximate Gross Internal Area = 498 sq ft / 46.3 sq m



Kitchen / Reception Room
24'11 x 10'5
7.59m x 3.17m
CH = 7'9/2.3

Bedroom
16'9 x 8'6
5.11m x 2.58m



Viewings

Viewings by arrangement only.
Call 02077225022 to make an appointment.

Council Tax Band

D

EPC Rating:

B

Energy Efficiency Rating		Current	Potential
<i>Very energy efficient - lower running costs</i>			
(92 plus) A			
(81-91) B		82	82
(69-80) C			
(55-68) D			
(39-54) E			
(21-38) F			
(1-20) G			
<i>Not energy efficient - higher running costs</i>			
England & Wales		EU Directive 2002/91/EC	