

## Helix Road, Brixton, SW2

2 bedroom flat - conversion for sale

**£625,000**

Share of Freehold

### Property Details

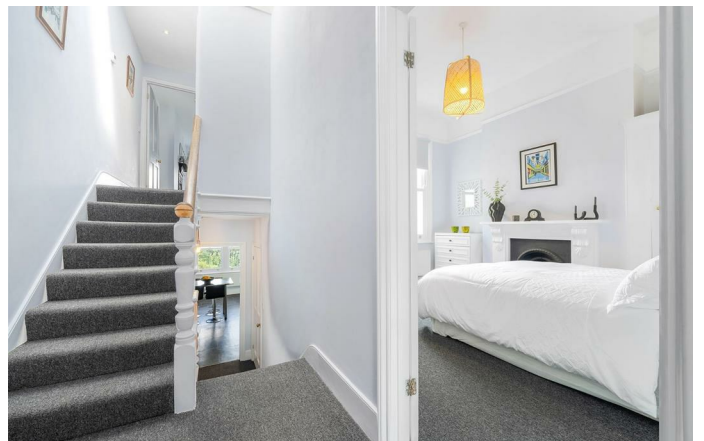
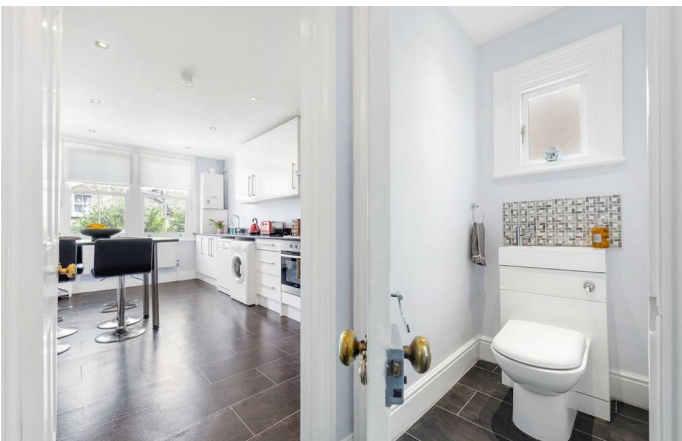
This charming and spacious two double bedroom split-level flat is set on a quiet, tree-lined street in the heart of Brixton. Occupying the upper floors of a handsome Victorian terrace, the property blends period character with modern living, boasting over 875 sq ft of well-designed space. The stylish kitchen overlooks leafy gardens and features ample storage, sleek cabinetry, and a breakfast bar. A bright reception room with a bay window, original fireplace, and high ceilings offers a welcoming space for relaxing or entertaining. Both bedrooms are generously sized doubles, including a tranquil principal bedroom with original fireplaces and built-in storage. A smart family bathroom and separate WC add convenience. The property also includes a demised loft with development potential (STPP). Ideally located within easy reach of central Brixton and the amenities of Brixton Hill, this home offers a peaceful retreat with vibrant local cafés, pubs, and green spaces close by.

### Features

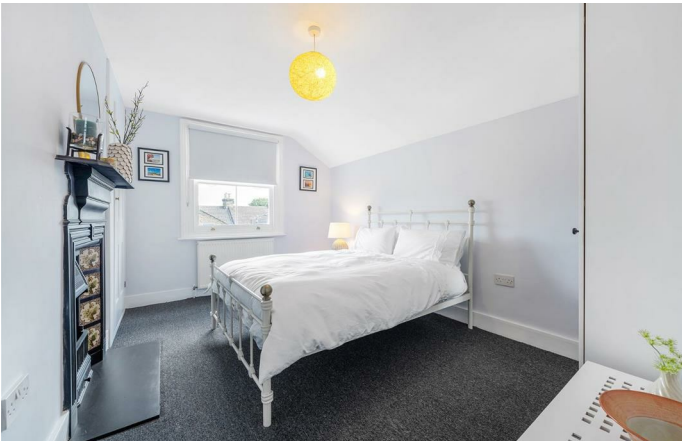
- Two double bedrooms
- Victorian conversion
- Demised loft with potential to extend in to (STPP)
- Bright and characterful
- Popular quiet residential street
- Local pubs, cafes and shops on the doorstep
- Brixton a ten-fifteen minute stroll
- Herne Hill a fifteen-minute walk
- Brockwell Park close by
- Share of freehold

Council tax band D

EPC rating C (70)







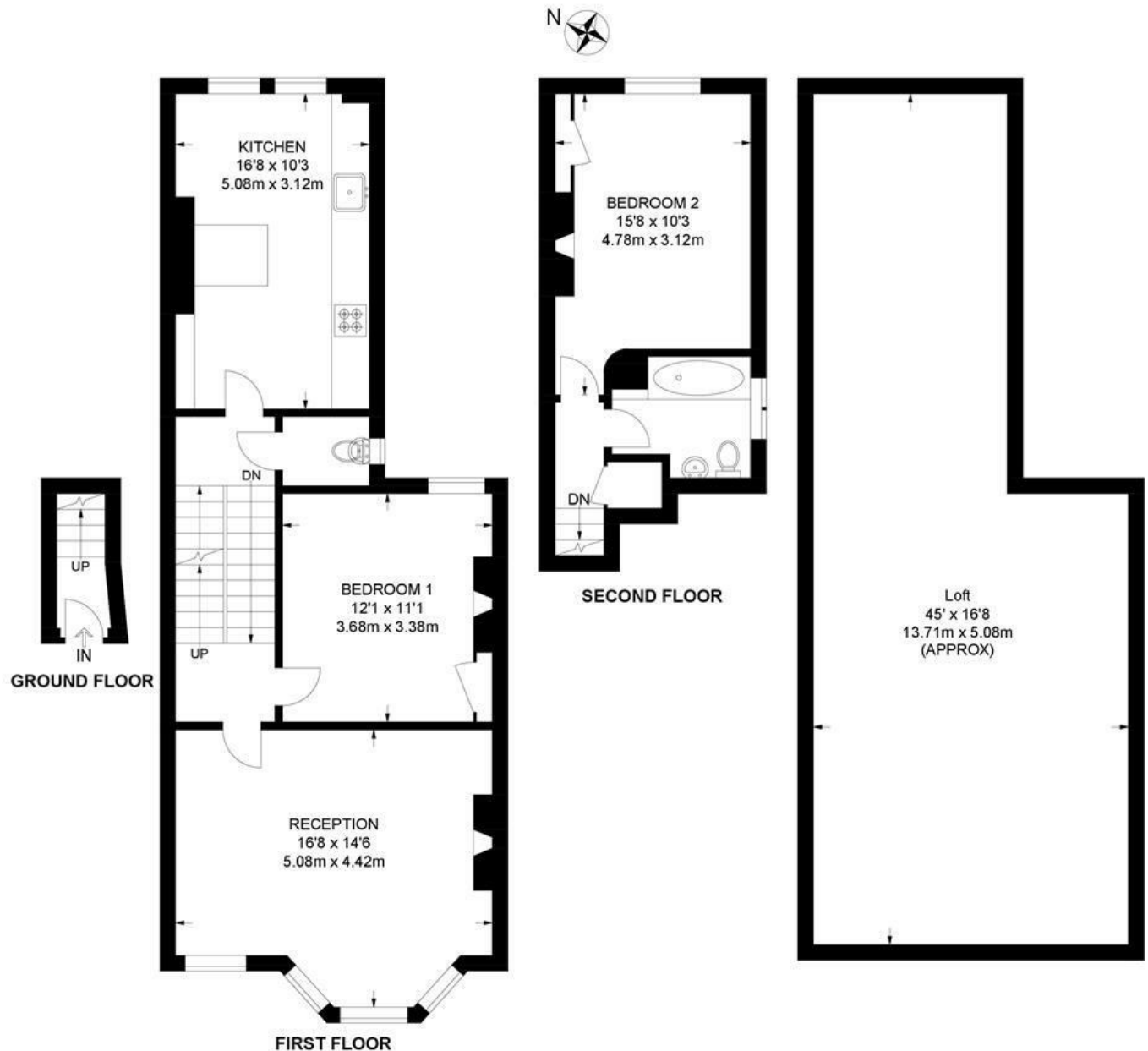
Helix Road, Brixton, SW2

## Helix Road, SW2

### 2 Bedroom Flat

APPROXIMATE GROSS INTERNAL AREA WITH LOFT APPROX: **1490 SQ FT / 138.4 SQ M**

APPROXIMATE GROSS INTERNAL AREA WITHOUT LOFT: **875 SQ FT / 81.3 SQ M**



While we try our very best, floor plans are produced as a guide only and we take no responsibility for the precise accuracy with which any property is represented.

Helix Road, Brixton, SW2

