



Price

£375,000

Leasehold

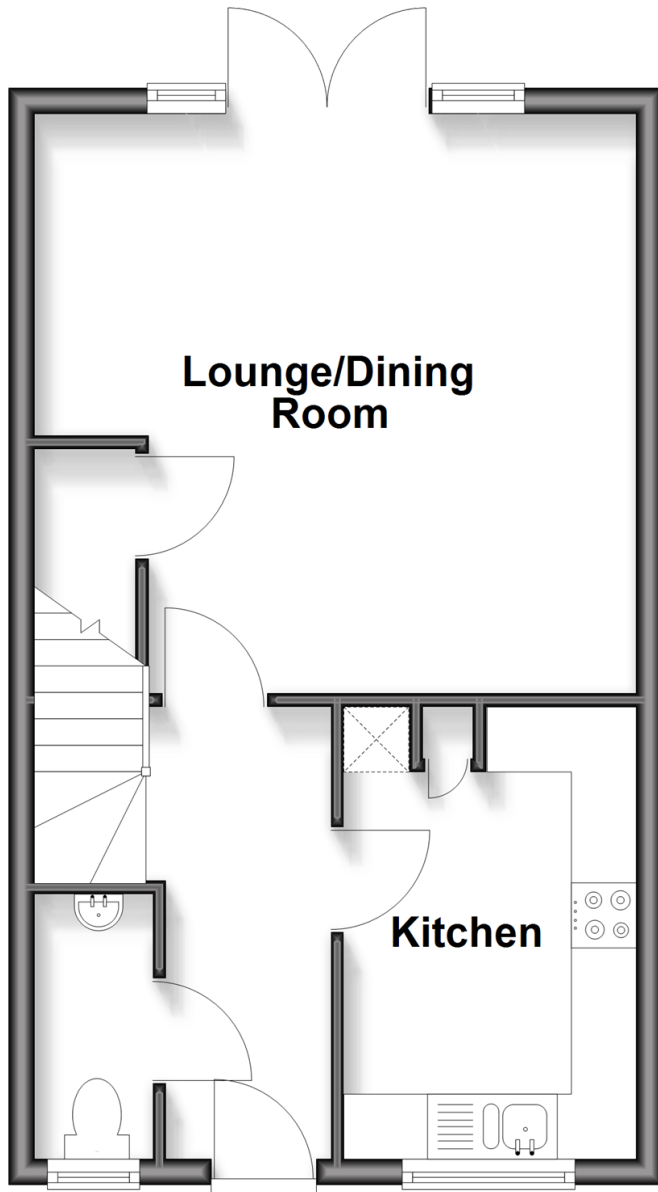
2x  1x  1x 

**Corden Place, Codmore
Hill, Pulborough, West
Sussex, RH20**

cubitt & west
Helping you move forwards

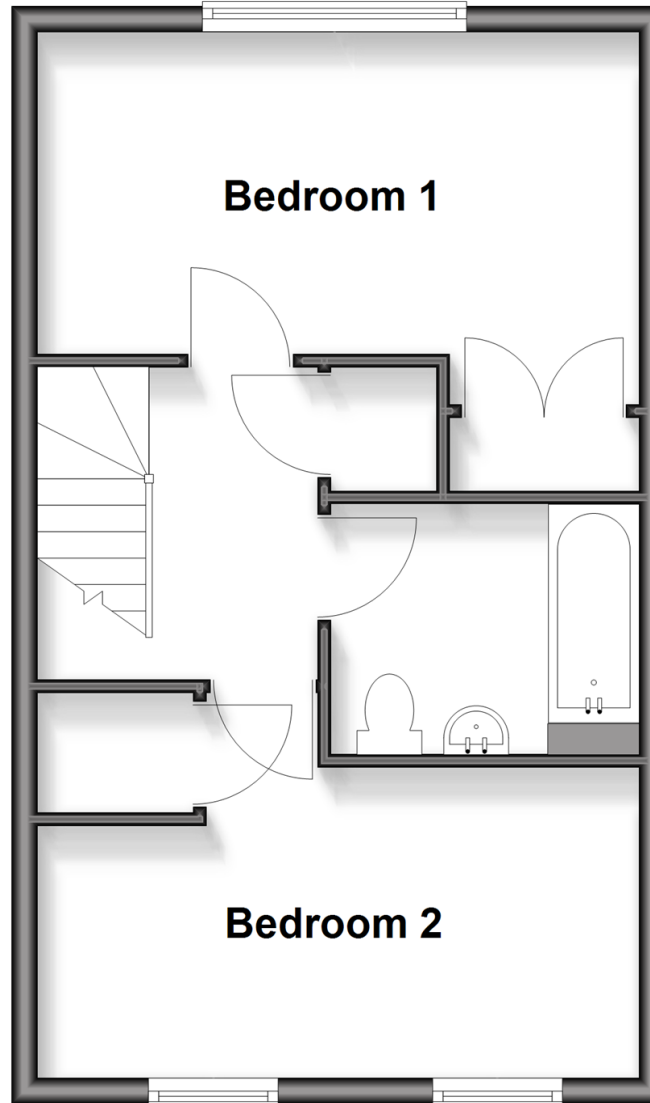
Ground Floor

Approx. 37.3 sq. metres (401.4 sq. feet)



First Floor

Approx. 37.3 sq. metres (401.4 sq. feet)



Accommodation

GROUND FLOOR

Entrance Hall

Cloakroom

Kitchen: 11'3 x 7'5 (3.43m x 2.26m)

Lounge/Dining Room: 15'3 maximum x 14'6 maximum (4.65m x 4.42m)

FIRST FLOOR

Landing

Bathroom

Bedroom 1: 15'9 x 7'8 up to fitted wardrobes (4.80m x 2.34m)

Bedroom 2: 15'4 into fitted wardrobes x 8'0 (4.68m x 2.44m)

OUTSIDE

2 Allocated Parking Spaces

Side Garden

Rear Garden



Main features

- There is the option to buy a 25% share of the property at £93,750, qualifying criteria applies
- If 100% share of the property is purchased, the property will become freehold upon completion
- An ideal first time home, with little DIY needed
- Part walled rear garden with handy side access
- Located on a small and desirable, popular estate
- Very useful allocated parking for 2 cars directly outside the front of the property



Nearest Schools

Primary School: St Mary's C of E Primary School 0.4 miles

Secondary School: The Weald School 4.1 miles



Transport Information

Train Stations:
Pulborough 0.7 miles
Billingshurst 4.1 miles



Address

Corden Place, Codmore Hill, Pulborough, West Sussex, RH20



Directions

For directions to this property please contact us.



cubitt&west
Helping you move forwards

Call Pulborough Branch 01798 875151 ■ cubittandwest.co.uk



21405957/20260227/CT/KF