



Princes Road, TW11

£1,199,950

A four bedroom Victorian Villa with a modern kitchen extension. This four bedroom property offers in excess of 1500 sq ft and is located in the sought after "Royal Roads" of Teddington.

Princes Road is perfect for schools, primary and secondary. Fulwell Station is on your doorstep and some great shops and restaurants.

Features

- Original Period Features
- South Facing Garden
- Four Double Bedrooms
- Large Kitchen Extension
- Excellent School Catchment
- Over 1,500 sq. ft



Princes Road, TW11

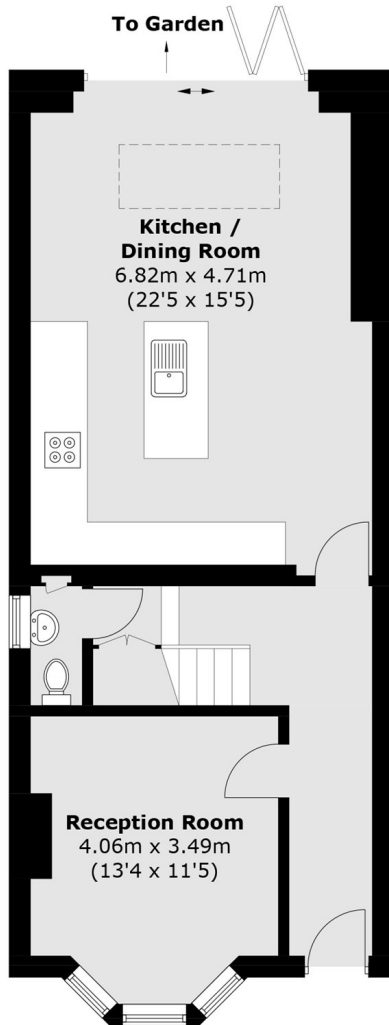
The welcoming hallway leads into a grand reception room, restored original flooring is throughout the house. The kitchen extension has a modern kitchen with a central island. The dining space and bi-fold doors open out onto the south facing garden.

On the half landing there is a large modern bathroom and two double bedrooms. There is a second bathroom on the top floor with two further double bedrooms.

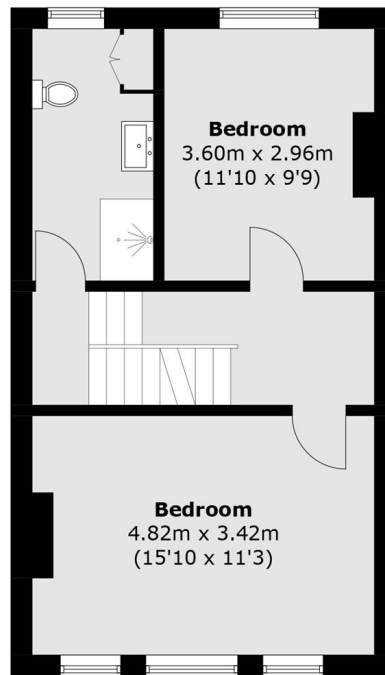
The bedrooms at the front of the property, on the first and top floors, have original arched windows making this Victorian Villa stand out on the street. There is a high demand for homes in this location.



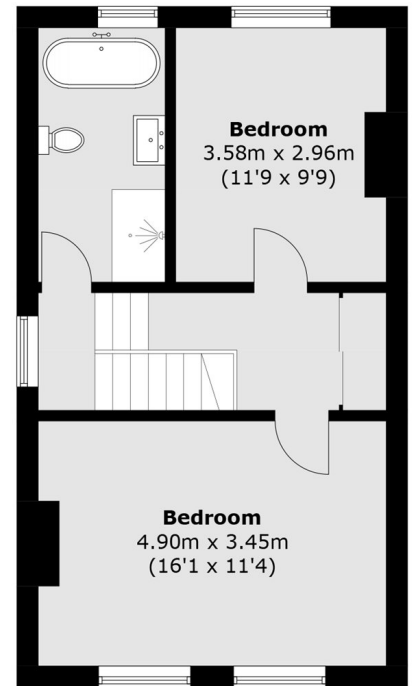
Princes Road, Teddington, TW11



Ground Floor



First Floor



Second Floor

Total area (approx.): 145.5 sq. m (1,566.2 sq. ft)