

Land - Building Plot

Price £450,000

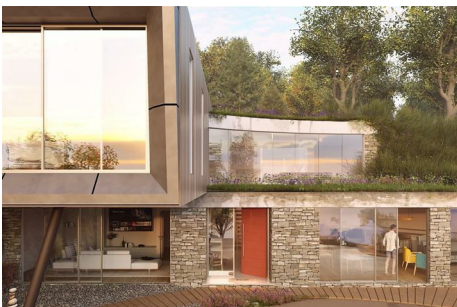
📍 Windy Lane, Little Eaton, Derby, DE21 5AJ



A rare and exciting opportunity to acquire an architect-designed building plot with planning permission for a truly striking, contemporary detached home of some 283 square metres, set in 2230 square metres with a further 5000 square metres of field and woodland to the rear.

This innovative and modern design presents a superior house concept, designed to work harmoniously with the natural contours of the sloping plot. The approved plans showcase bold architectural vision, with clean lines, expansive glazing and dynamic living spaces that maximise both light and panoramic countryside views.

Located in the superb sought after village of Little Eaton, the plot combines peaceful country living with excellent access to nearby Duffield, Belper and Derby, together with close links to major road networks. The location benefits from outstanding local schools, charming pubs and restaurants.



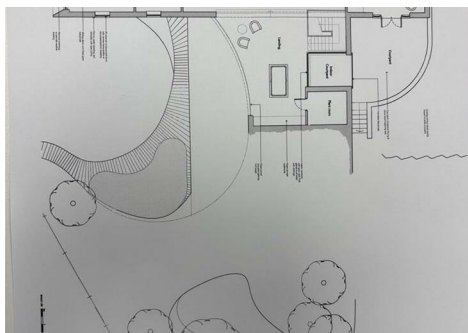
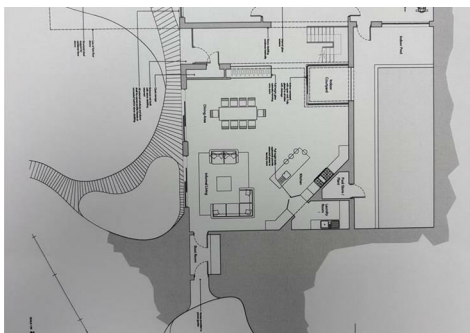
www.phillipsandco.co.uk | 01332 40 25 25

**Phillips
& Co.**
EST. 2012
MY PAD GROUP

Land - Building Plot

£450,000

 Windy Lane, Little Eaton, Derby, DE21 5AJ



You may download, store and use the material for your own personal use and research. You may not republish, retransmit, redistribute or otherwise make the material available to any party or make the same available on any website, online service or bulletin board of your own or of any other party or make the same available in hard copy or in any other media without the website owner's express prior written consent. The website owner's copyright must remain on all reproductions of material taken from this website.

Energy Efficiency Rating		Current	Potential
100 energy efficient - lower running costs			
92-100	A		
81-91	B		
69-80	C		
55-68	D		
44-54	E		
35-43	F		
1-34	G		
Not energy efficient - higher running costs			
England & Wales		EU Directive 2002/91/EC	

www.phillipsandco.co.uk | 01332 40 25 25

