



£310,000

Beavers Lodge, Carlton Road, Sidcup, DA14 6TU

Chattertons

EST 1893

A bright spacious purpose built second floor apartment, situated in a peaceful location with communal garden and within a few minutes walk of Sidcup High Street. There are open fields in either direction just a few minutes walk away.

The property is offered in very good decorative condition, the kitchen and bathroom are in excellent condition. The property benefits from gas fired central heating and double glazing. Garage en block with up and over door.



Spacious top floor apartment

Excellent condition

Peaceful and convenient location

Sought after area, close to high street and park

Two bedrooms

Entrance Hall

Entrance door, entry phone, storage cupboard, utility cupboard with plumbing for washing machine & shelving, access to loft

Living room 19' 3" x 12' 3" (5.86m x 3.73m)

Double glazed window to rear, radiator, door to kitchen

Kitchen 9' 4" x 7' 1" (2.84m x 2.16m)

Window to rear, range of base and wall cupboards with fitted work tops, inset sink, low level electric oven, electric hob, extractor fan, cupboard with gas fired boiler

Main bedroom 14' 11" x 8' 8" (4.54m x 2.64m)

Double glazed window to front, fitted wardrobes, radiator

Well fitted kitchen

Gas fired central heating

Double glazed windows

Garage en block

Second bedroom 9' 9" x 6' 11" (2.97m x 2.11m)

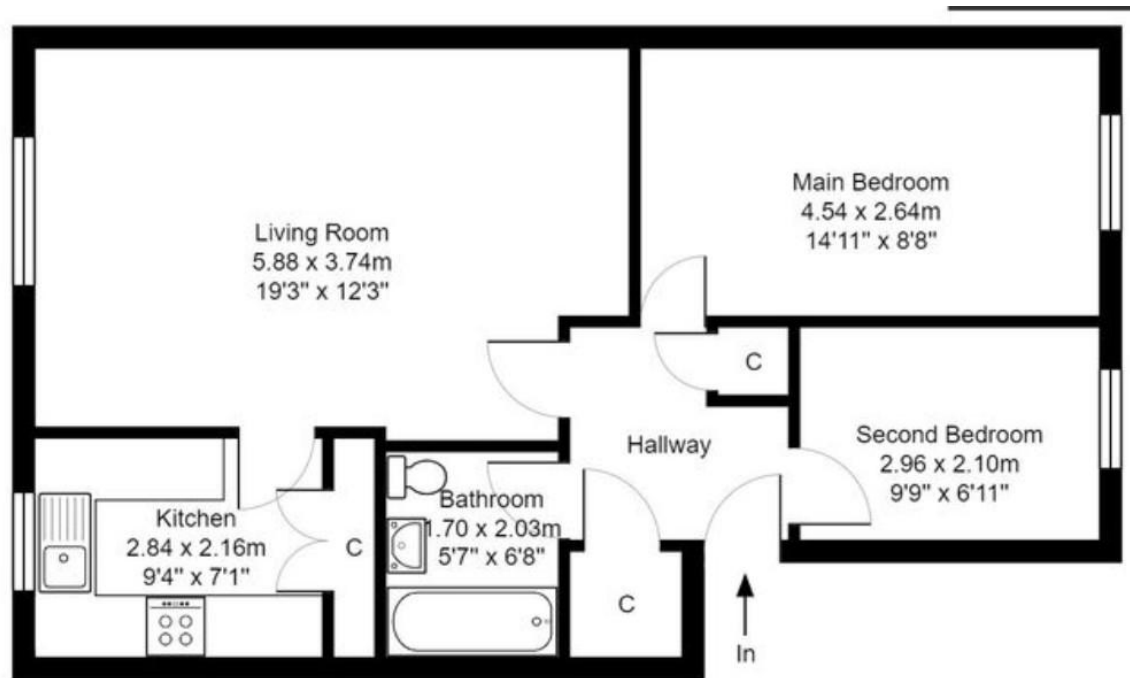
Double glazed window to front, radiator

Bathroom 5' 7" x 6' 8" (1.70m x 2.03m)

Tiled walls, panelled bath with mixer taps, shower & shower screen, vanity wash hand basin, mixer tap, close coupled wc suite

Garage en block





All dimensions are approximate and are quoted for guidance only, their accuracy cannot be confirmed. Reference to appliances and/or services does not imply they are necessarily in working order or fit for the purpose. Buyers are advised to obtain verification from their solicitors as to the freehold/leasehold status of the property, the position regarding any fixtures and fittings and where the property has been extended / converted as to Planning approval and Building Regulation compliance. These particulars do not constitute or form part of an offer or contract, nor may they be regarded as representations. All interested parties must themselves verify their accuracy. Where a room layout is included this is for general guidance only, it is not to scale and its accuracy cannot be confirmed. Ref Code:

020 8859 4000

405 Footscray Road
New Eltham SE9 3UL

sales.neweltham@chattertons.org.uk

Chattertons

EST 1893