



## Bridgewater Square, EC2Y

£775,000

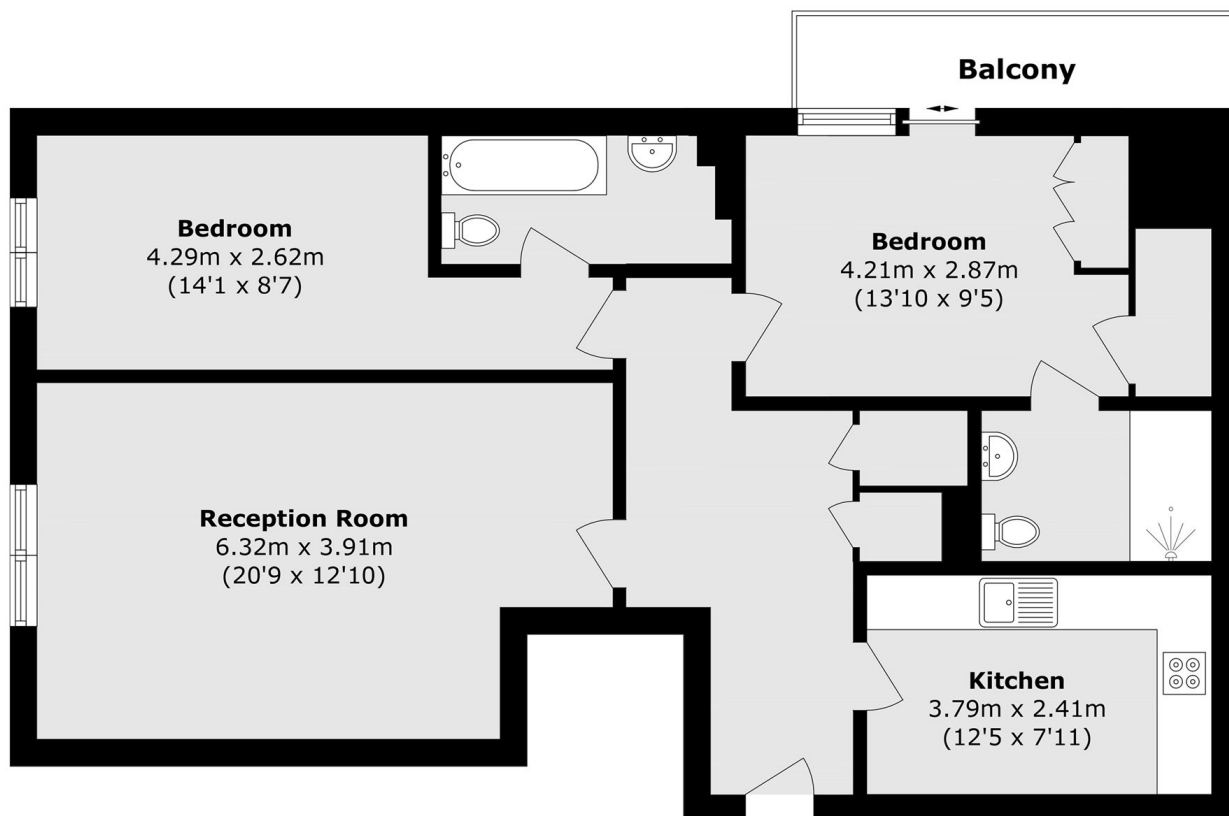
This large two double bedroom, two bathroom apartment is located in the Cobalt Building and has a separate kitchen to living room with integrated appliances. The property has an allocated parking space and sold chain free.

Cobalt Building has lift access and a secure entry system. The property is located a quarter mile from Barbican underground station, with easy access to large supermarkets and amenities on Whitecross Street and One New Change shopping centre by St Paul's.

### Features

- Two Double Bedrooms
- Two Bathrooms
- Private Terrace
- Allocated Parking Space
- Chain Free
- Day Time Porter

# Bridgewater Square, London, EC2Y



Total area (approx.): 85.5 sq. m (920.3 sq. ft)

Balcony area (approx.): 4.9 sq. m (52.7 sq. ft)