



## Long Lane, SE1 £475,000

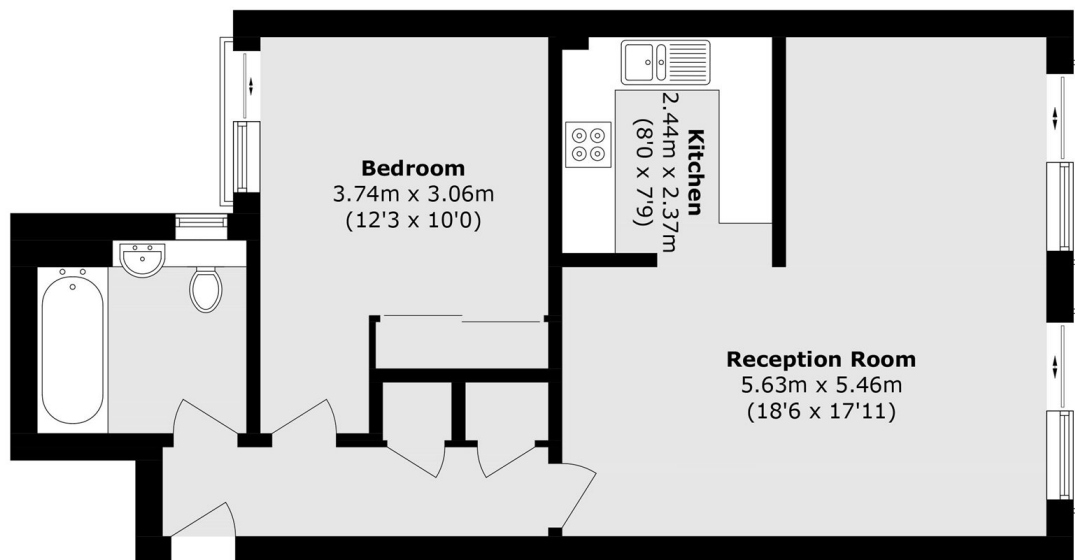
A highly attractive south-facing apartment, with a spacious open plan living room and fully fitted kitchen, with ample room for dining and a separate seating area, a generous double bedroom, a modern bathroom and plenty of built-in storage. Sold chain free.

The Printworks Apartments are set in the heart of SE1, moments away from London Bridge Station. Bermondsey Street, Borough Market and the Southbank are all on your doorstep, with numerous attractions, cafés, restaurants, galleries and other amenities nearby.

### Features

- South-Facing Aspect
- Open Plan Living Area
- Wooden Floors Throughout
- Secure Entry & Lift Access
- Chain Free Sale

Long Lane,  
London, SE1



### Fourth Floor

Total area (approx.): 56.6 sq. m (609.2 sq. ft)