



9 Dickinson Close, Bolton
£250,000

Miller Metcalfe
Every step of the way

9 Dickinson Close

Bolton, Bolton

Spacious Five Bedroom Property | Open Plan Living | Tons Of Space Including Utility & Dressing Room | No Chain Looking for a unique and spacious property with an abundance of space perfect for family living? This well-appointed property on Dickinson Close is available immediately with no onward chain. Take advantage of a stunning open plan lounge/living area in addition to a fitted kitchen, utility room and cloakroom on the ground floor. Upstairs, there's five bedrooms, a family bathroom suite with the master bedroom having the additional benefit of a walk-in-wardrobe. The amount of space on offer cannot be underestimated and we think this would make a smart purchase for a growing family who need the space. The house is well presented throughout and ready to move straight into and make your own. Dickinson Close is a quiet street located just off Halliwell Road. A number of amenities are nearby such as shops, schools, supermarkets and leisure facilities.

Council Tax band: A

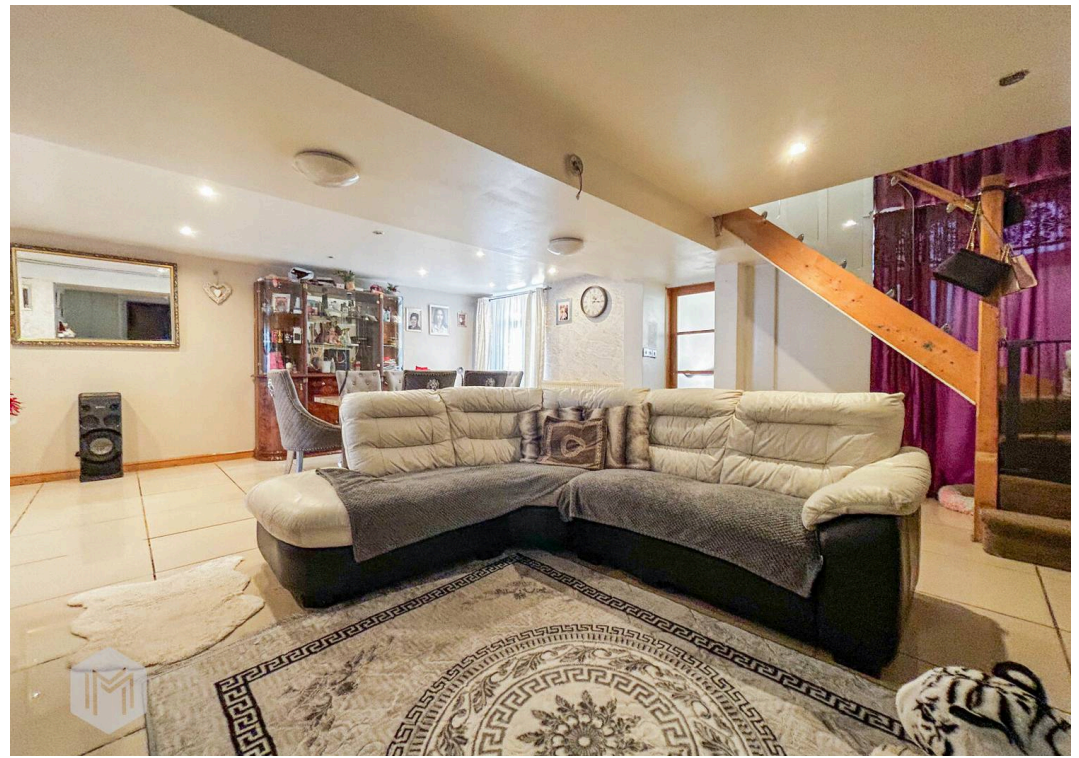
Tenure: Freehold

EPC Energy Efficiency Rating: C

EPC Environmental Impact Rating: D

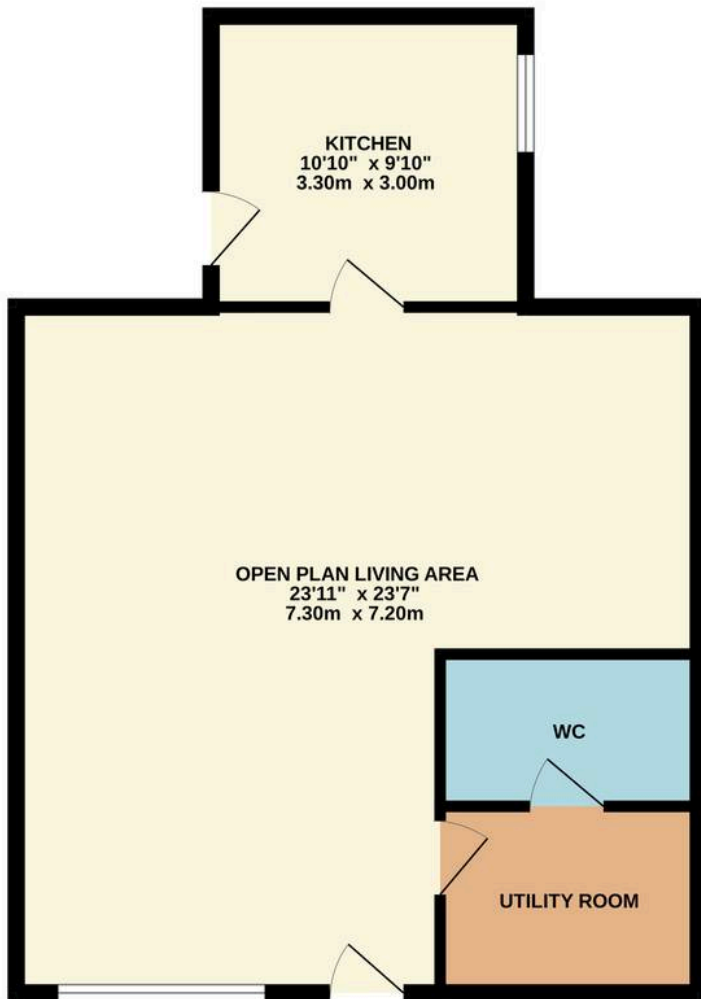




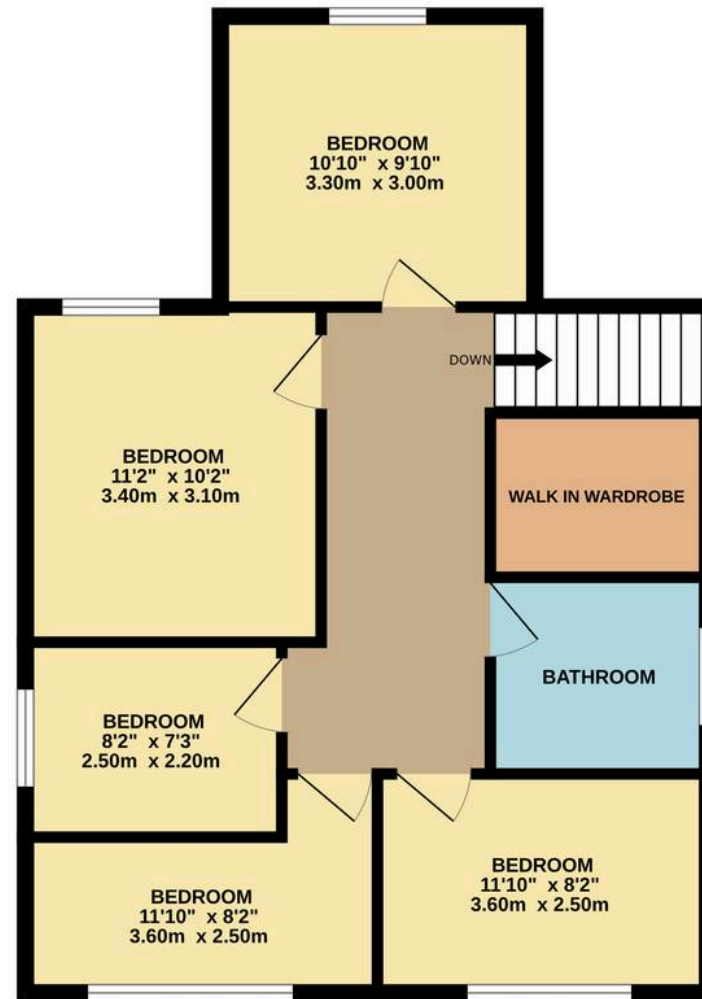




GROUND FLOOR
643 sq.ft. (59.7 sq.m.) approx.



1ST FLOOR
643 sq.ft. (59.7 sq.m.) approx.



TOTAL FLOOR AREA : 1285 sq.ft. (119.4 sq.m.) approx.

Whilst every attempt has been made to ensure the accuracy of the floorplan contained here, measurements of doors, windows, rooms and any other items are approximate and no responsibility is taken for any error, omission or mis-statement. This plan is for illustrative purposes only and should be used as such by any prospective purchaser. The services, systems and appliances shown have not been tested and no guarantee as to their operability or efficiency can be given.

Made with Metropix ©2026



Bolton

Miller Metcalfe, 2-10 Bradshawgate - BL1 1DG

01204 535353 • bolton@millermetcalfe.co.uk • millermetcalfe.co.uk/

Miller Metcalfe
Every step of the way