

Castles



ASKING PRICE

£550,000

Enfield Lock

Enfield, EN3 6JQ Leasehold

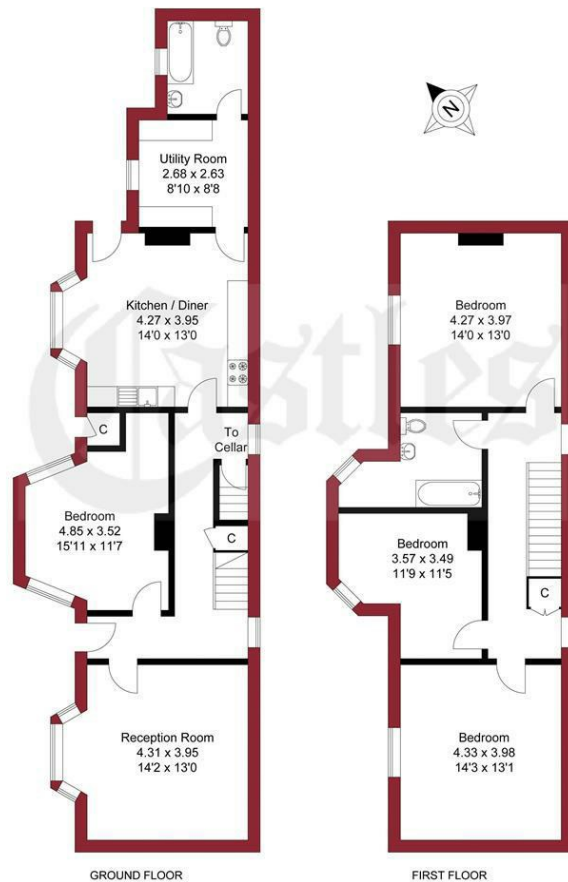
PROPERTY SUMMARY

A substantial 3 bedroom detached Victorian Lock Keeper's house located overlooking the lock on the River Lee in the conservation area offering spacious accommodation to include 2 separate reception rooms, kitchen diner, utility room, 2 bathrooms and a cellar. The property is situated in an idyllic setting overlooking the river whilst remaining close to local amenities. Viewing is highly recommended. Chain free sale.





APPROXIMATE GROSS INTERNAL AREA
141.46 sqm / 1522.66 sqft



THIS PLAN IS FOR ILLUSTRATION ONLY AND MAY NOT BE REPRESENTATIVE OF THE PROPERTY

For a guide to the area please scan this code for more information



House - Detached

Leasehold

Council: Enfield

Council Tax Band: E

Lease Remaining: From and including 8 January 2008 to and including 7 January 2258. 233 years remaining.

Agents Note: Whilst every care has been taken to prepare these particulars, they are for guidance purposes only. All measurements are approximate and are for general guidance purposes only and whilst every care has been taken to ensure their accuracy, they should not be relied upon and potential buyers/tenants are advised to recheck the measurements



OFFICE ADDRESS

243 - 245 Hertford Road
Enfield
London
EN3 5JJ

OFFICE DETAILS

0208 804 8000
enfield@castles.london
<https://www.castles.london>

Energy Efficiency Rating		Current	Potential
Very energy efficient - lower running costs			
(92-101) A	(81-91) B		
(69-80) C	(55-68) D		
(39-54) E	(21-38) F		
(1-10) G			
Not energy efficient - higher running costs			
England & Wales		EU Directive 2002/91/EC	