



Elizabeth Close

London, W9

Asking Price £1,950,000

Tucked away in a quiet gated close in the heart of Little Venice is this stylish and very well presented townhouse that benefits from off-street parking. The property boasts a contemporary finish over four floors.

Accommodation comprises: spacious eat in kitchen and separate reception room complete with west facing balcony, four double bedrooms, one with its own balcony, three bathrooms, guest cloakroom and large utility room.

Elizabeth Close is a gated development of beautiful houses in the heart of Little Venice. The property is less than 0.1 miles from Warwick Avenue underground station Bakerloo Line which provides access to Paddington Railway Station, Heathrow Express and West End. The picturesque Regents Canal, cafes and amenities of Clifton Road are also within 0.1 miles of the property.

CHESTERTONS



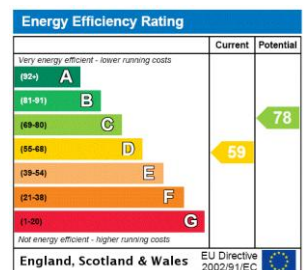
Elizabeth Close

London, W9

- A charming freehold house set within a gated mews.
- Spanning approximately 1850 square feet and benefitting from off street parking.
- Set within central Little Venice and set over 4 floors.



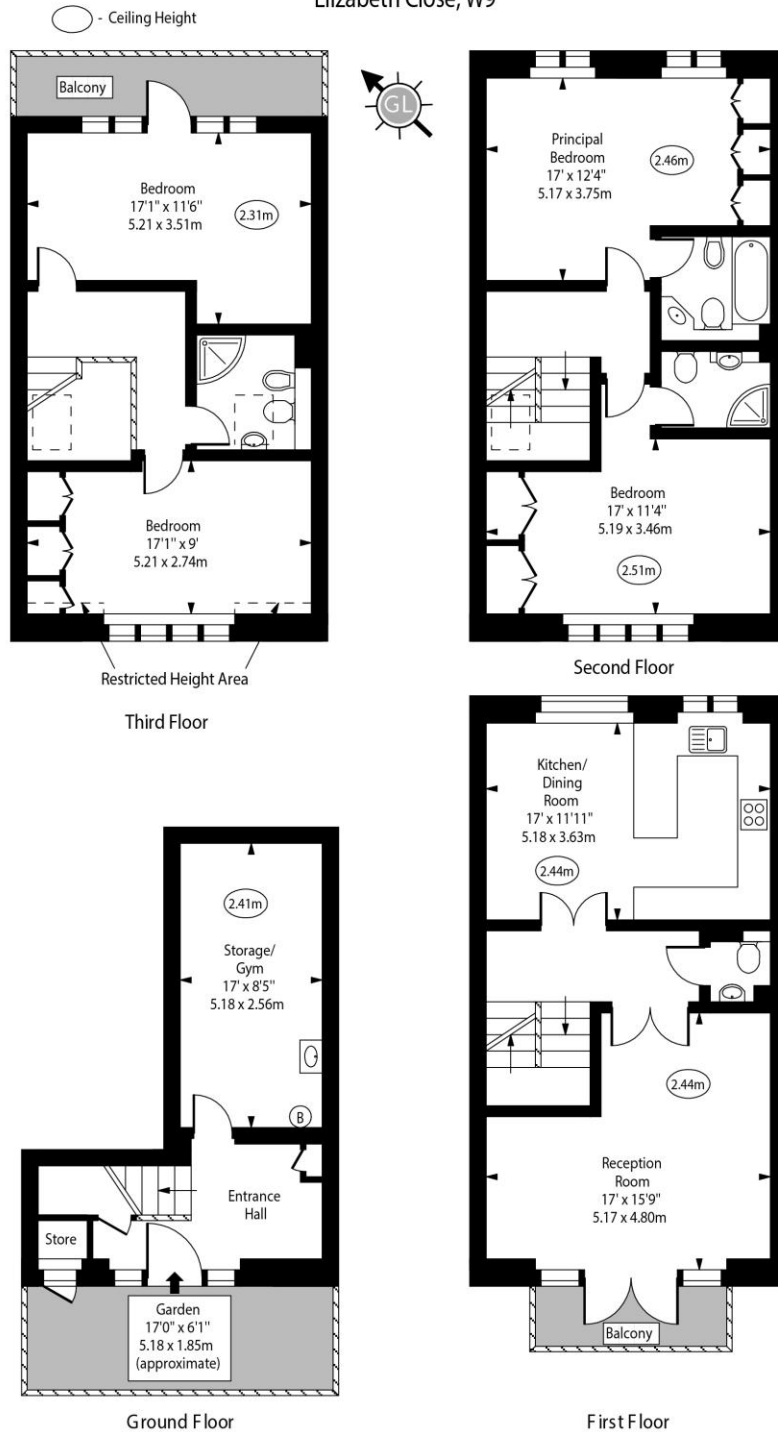
Tenure: Freehold
Service Charge: £1466
Ground Rent: £0
Local Authority: Westminster
Council Tax Band: H



Chestertons Little Venice Sales

26 Clifton Road
Maida Vale
London
W9 1SX
littlevenice@chestertons.co.uk
020 7286 4632
chestertons.co.uk

Elizabeth Close, W9



Approx Gross Internal Area 1854 Sq Ft - 172.24 Sq M
 Approx. Floor Area Including Restricted Heights 1860 Sq Ft - 172.79 Sq M
 (Excluding Store)

For Illustration Purposes Only - Not To Scale
 www.goldlens.co.uk
 Ref. No. 020335R