



Jack Taggart & Co

RESIDENTIAL SALES AND LETTINGS



GUIDE PRICE

£1,250,000

Shirley Drive

Brighton and Hove, BN3 6UE

PROPERTY SUMMARY

GUIDE PRICE £1,250,000 - £1,350,000

Jack Taggart & Co are delighted to present this substantial and beautifully modernised four bedroom semi-detached family home, occupying an elevated position within a highly desirable residential setting. Extending to approximately 2,609 sqft and arranged across over three floors, this impressive property offers exceptional family living space, contemporary interiors and a stunning mature rear garden.

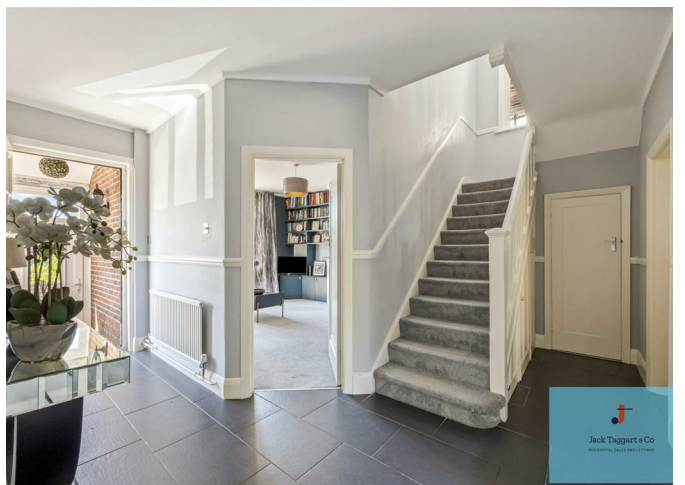
4



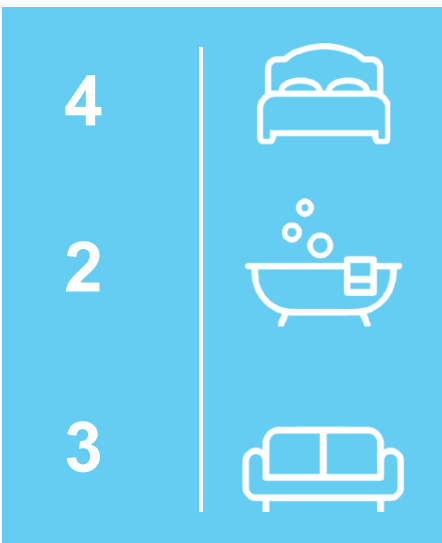
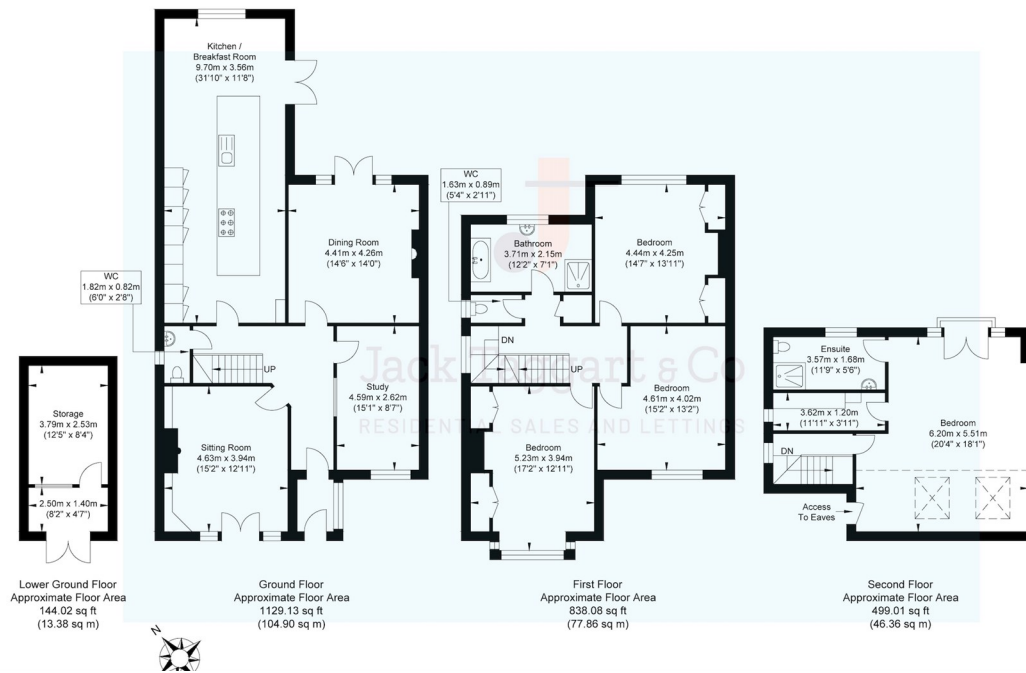
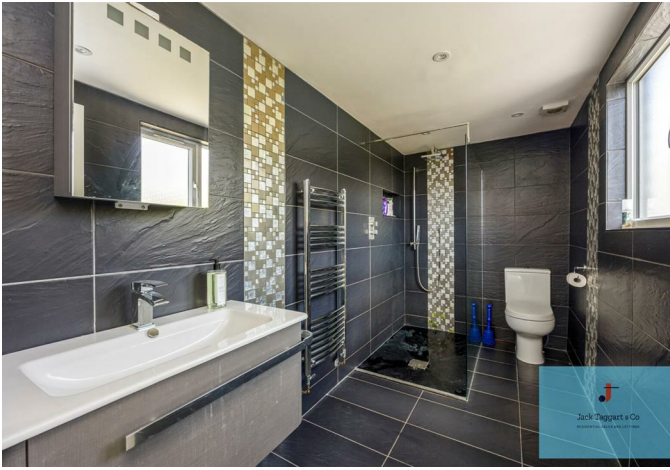
2



3







Energy Efficiency Rating		
	Current	Potential
Very energy efficient - lower running costs		
(92 plus) A		
(81-91) B		
(69-80) C		
(55-68) D		
(39-54) E		
(21-38) F		
(1-20) G		
Not energy efficient - higher running costs		
	69	78
England & Wales	EU Directive 2002/91/EC	

Agents Note: Whilst every care has been taken to prepare these particulars, they are for guidance purposes only. All measurements are approximate and are for general guidance purposes only and whilst every care has been taken to ensure their accuracy, they should not be relied upon and potential buyers/tenants are advised to recheck the measurements



OFFICE ADDRESS
55 Queen Victoria Avenue
BN3 6XA

OFFICE DETAILS
01273 974929
sales@jacktaggart.co.uk