



Let **UK** Home

2 Bedrooms

Flat

Located in London

£4,117 Per Month



info@letukhome.co.uk

<https://www.letukhome.co.uk/>

01795 358 886



6 Malthouse Road London

SW11 7BY



Let UK Home are excited to offer this 2-bedroom apartment in the heart of Denver Building part of the Lexington Gardens.

This property comprises a large bright open plan kitchen and living room leading to a large private balcony with great views, two double bedrooms with wardrobe (master en-suite), a large family sized bathroom and ample storage. A virtual viewing is provided.

The residents of this apartment will enjoy a concierge service, gym facilities, a private cinema, a private residents' gymnasium, a children's play area, and a storage room.

From the development, you can walk to Nine Elms station on the Northern Line. Taking the Northern Line will get you to major transport hubs like Waterloo. From the development, you can also reach Vauxhall station on the Victoria Line. You can walk to Battersea Park and Battersea Power Station, and reaching Chelsea just requires crossing the bridge.

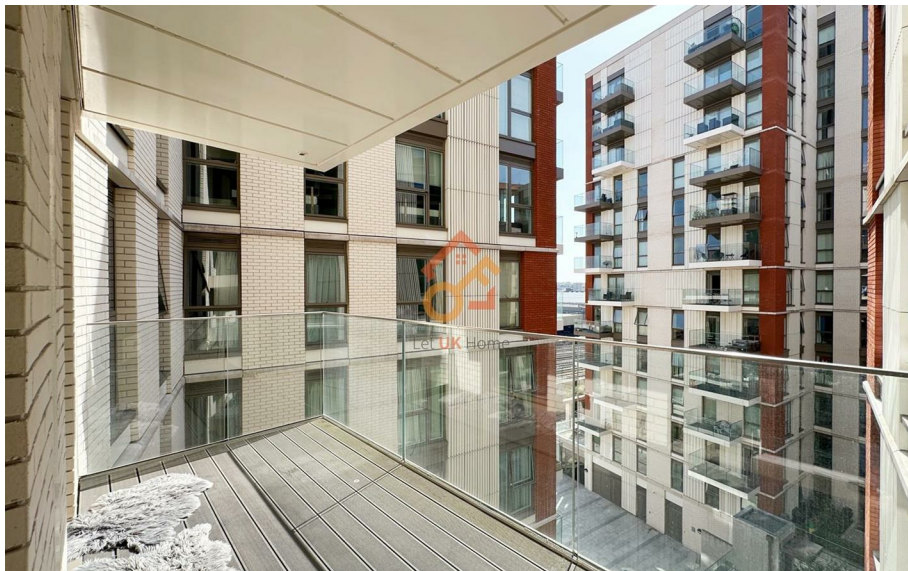
The area around Nine Elms has excellent educational resources. By bus or subway, you can quickly get to many London universities: LSE, King's College London (KCL), Imperial College (IC), University of Westminster, and more.

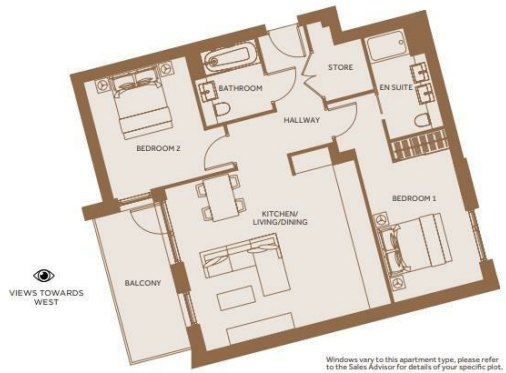
Centered around New Nine Elms Park, it is surrounded by a variety of top restaurants, ingenious cafes and luxury shopping malls. If the shopping center at Battersea Power Station, with more than 100 shops/restaurants/entertainment

6 Malthouse Road London

£4,117 Per Month

- 6th Floor
- 24h Security
- Cinema & Game Room
- Nine Elms
- EPC Rating: B
- Concierge Service
- The Gym
- Virtual Viewing Available
- Walkable to Tube





APARTMENT LG15		
Kitchen/Living/Dining	5.700m x 4.996m	18'8" x 16'5"
Bedroom 1	4.050m x 2.745m	13'3" x 9'0"
Bedroom 2	3.600m x 3.140m	11'10" x 10'4"



Let **UK** Home

3F 2 Eastbourne Terrace
 Paddington
 London
 W2 6LG

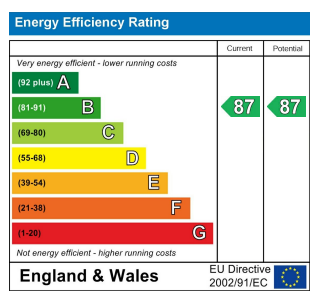
01795 358 886

info@letukhome.co.uk

Council Tax Band: F

Local Authority:

Agents Note: Whilst every care has been taken to prepare these particulars, they are for guidance purposes only. All measurements are approximate and are for general guidance purposes only and whilst every care has been taken to ensure their accuracy, they should not be relied upon and potential buyers/tenants are advised to recheck the measurements.



<https://www.letukhome.co.uk/>