



63 Palmeira Plaza Holland Road

Hove, BN3 1BA

Offers in excess of £575,000

A beautifully presented two bedroom, two bathroom second floor apartment, forming part of a contemporary development on Palmeira Plaza, Holland Road. Extending to approximately 794 sq ft, this stylish modern home offers a superb open plan living and kitchen space, private balcony, excellent natural light and a highly convenient central Hove location.



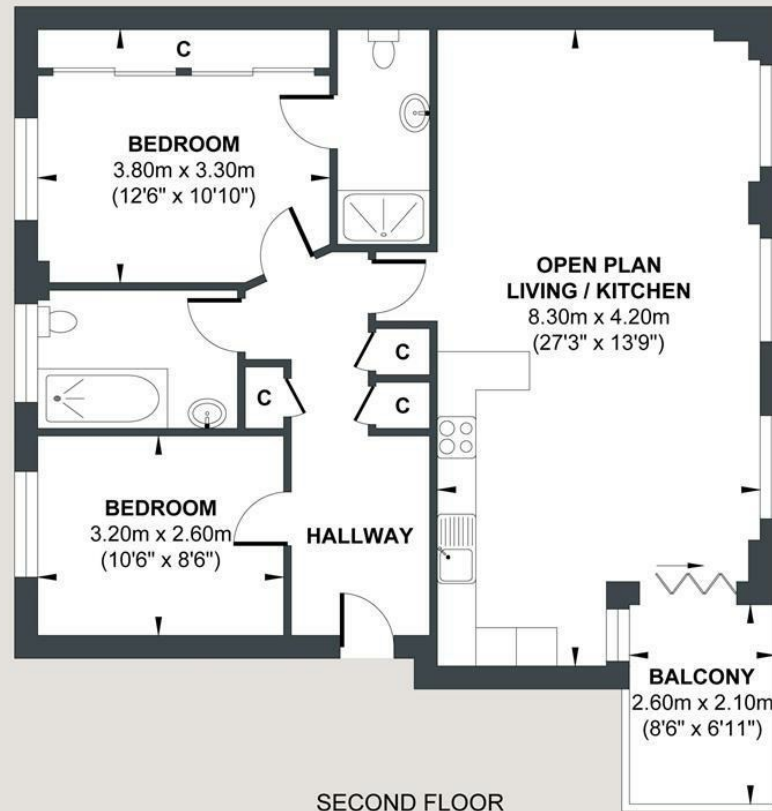
- x2 Bedrooms
- Second Floor
- High Standard Finish Throughout
- Central Hove Location
- Walking distance to the Seafront
- x2 Bathrooms
- Lift in Building
- West Facing Balcony
- Excellent Transport Links
- Chain Free

Energy Efficiency Rating		
	Current	Potential
Very energy efficient - lower running costs		
(92 plus) A		
(81-91) B		
(69-80) C		
(55-68) D		
(39-54) E		
(21-38) F		
(1-20) G		
Not energy efficient - higher running costs		
	83	83
England & Wales	EU Directive 2002/91/EC	



HOLLAND ROAD

Approx. Gross Internal Floor Area = 73.74 sq m / 793.73 sq ft
Illustration for identification purposes only, measurements are approximate, not to scale.



Approximate Floor Area
793.73 sq ft
(73.74 sq m)



Foster & Co and their clients give notice that:
These sales particulars do not constitute any part of an offer of contract and are for guidance for prospective purchases only and should be not relied upon as a statement of fact.
We are not to be held responsible for material information that has not been given to us by our client at the time of marketing.
All measurements are approximate

