



Guide Price
£425,000

Freehold

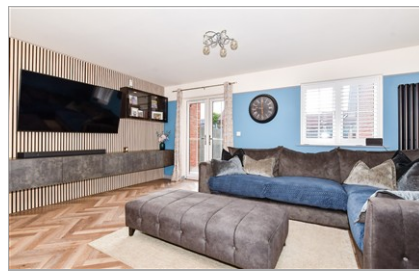
4x  2x  1x 

**Lasius Drive, Coxheath,
Maidstone, Kent, ME17**

OVER 60?

Secure this property
for up to **59% less!**

Wards
Helping you move forwards



Main features

- Beautifully presented, modern family house
- Ample parking with a resin driveway and a garage
- Remainder of NHBC warranty for peace of mind
- Spacious and enclosed rear garden, perfect for the summer months
- Popular village location, just a short walk to local shops, amenities and sought after Coxheath Primary School

Accommodation

GROUND FLOOR

Entrance Hall
Downstairs Cloakroom: 5'0 x 2'1 (1.53m x 0.64m)
Kitchen: 11'1 x 9'1 (3.38m x 2.77m)
Lounge/Diner: 17'1 x 16'0 (5.21m x 4.88m)

FIRST FLOOR

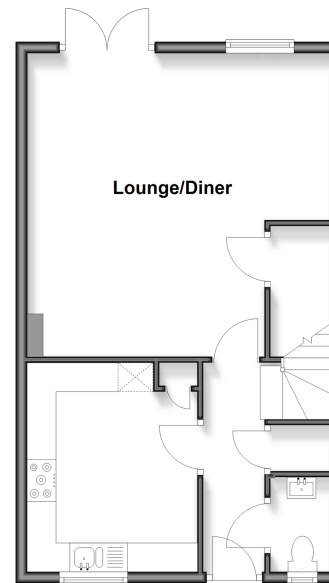
Landing
Bedroom 1: 10'1 x 10'1 (3.08m x 3.08m)
En Suite Shower Room: 7'0 x 5'1 (2.14m x 1.55m)
Bedroom 2: 10'1 x 8'0 (3.08m x 2.44m)
Bedroom 3: 9'1 x 6'1 (2.77m x 1.86m)
Bedroom 4: 8'0 x 6'1 (2.44m x 1.86m)
Bathroom: 7'1 x 6'1 (2.16m x 1.86m)

OUTSIDE

Garage and Driveway
Rear Garden
Shed

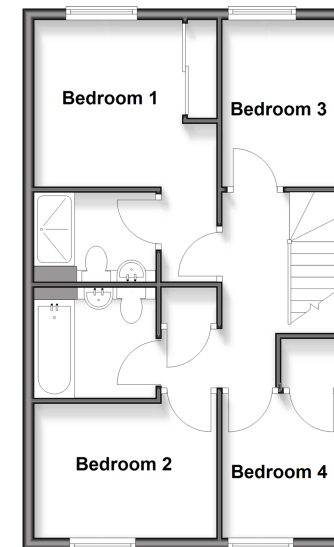
Ground Floor

Approx. 47.4 sq. metres (510.4 sq. feet)



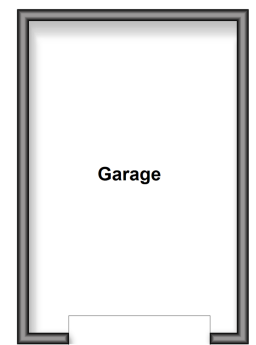
First Floor

Approx. 47.5 sq. metres (511.3 sq. feet)



Outbuilding

Approx. 19.5 sq. metres (210.2 sq. feet)



Call Loose - 01622 744067 ■ wardsofkent.co.uk

- Legal advice should be taken to verify fixtures/fittings, planning, alterations and/or lease details
- Through a Homewise Home For Life Plan people aged 60+ can secure this property for up to 50% less, by purchasing a Lifetime Lease.

- Appliances & services are untested, dimensions are approximate and floor plans are not to scale



13022135/20251008/LM/