



Fareham Road, Gosport PO13 0AB

welcome to

Fareham Road, Gosport

Four bedroom Victorian home set over three floors ** This home is a subtle blend of character and modern living ** Ideal for a growing family ** Re-fitted kitchen ** Sun Room leading onto private rear garden ** Mature grounds ** Four generous size bedrooms ** Shower room and bathroom **

Entrance Porch

Upvc double glazed double door, leading to front door, vaulted across the front of the home.

Entrance Hall

Front door, stairs to first floor with cupboard under, double glazed window to side aspect, radiator.

Sitting Room

13' 9" max x 12' 2" max (4.19m max x 3.71m max)
Upvc double glazed double door to front, feature fireplace, radiator.

Further Reception Room

16' 3" max x 8' max (4.95m max x 2.44m max)
Window to rear aspect, door to sun room.

Kitchen

12' 9" x 10' 6" (3.89m x 3.20m)
Upvc double glazed window to side aspect, matching range of eye and base level units with work surface over, one and a half bowl stainless steel sink drainer, space for American style fridge/freezer, space for cooker, plumbing for dishwasher.

Sun Room

18' 8" max x 7' 7" max (5.69m max x 2.31m max)
Upvc double glazed French door to garden, sky light, double glazed window to side aspect, radiator, tiled floor, cupboard enclosing plumbing for washing machine and tumble dryer.

Cloakroom

Wc, wash hand basin, radiator, tiled surrounds.

Landing One

Upvc double glazed window to side aspect, stairs to top floor.

Bedroom Two

11' max x 13' 9" max (3.35m max x 4.19m max)
Upvc double glazed window to front aspect, radiator, feature fireplace, built-in wardrobe.

Bedroom Three

12' 8" max x 10' 4" max (3.86m max x 3.15m max)
Upvc double glazed window to rear aspect, radiator, feature fireplace, built-in wardrobe.

Bedroom Four

8' max x 16' 4" max (2.44m max x 4.98m max)
Upvc double glazed window to rear, radiator, feature fireplace.

Family Shower Room

Upvc obscure double glazed window to front, heated towel rail, wc, wash hand basin with utility cupboard under, shower cubicle, tiled surrounds.

Landing Two

Upvc double glazed window to side aspect.

Master Bedroom

20' 2" max x 15' 1" max (6.15m max x 4.60m max)
Two sky lights, two radiators, eave storage, access to loft void, restricted head room to parts.

Re-Fitted Bathroom

Sky light, Jacuzzi style bath, shower cubicle, wc, wash hand basin, radiator, extractor fan, tiled surrounds.

Front Garden

Mature grounds, laid to lawn area, pathway leading to front door, shrub/hedging and flower borders.

Rear Garden



Patio extends to laid to lawn area, enclosed to perimeters, pedestrian side access.



view this property online fox-and-sons.co.uk/Property/GOS113571



welcome to

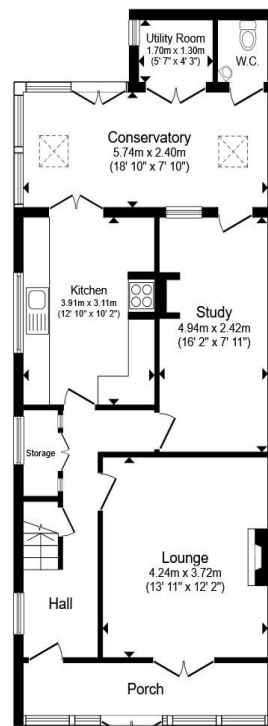
Fareham Road, Gosport

- Four bedroom Victorian home set over three floors
- This home is a subtle blend of character and modern living
- Ideal for a growing family
- Re-fitted kitchen
- Sun Room leading onto private rear garden

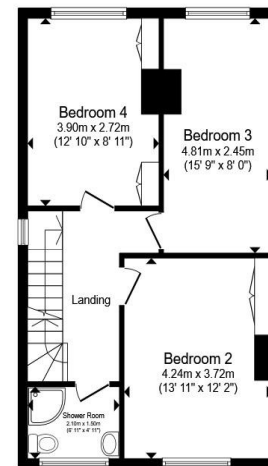
Tenure: Freehold EPC Rating: C

Council Tax Band: D

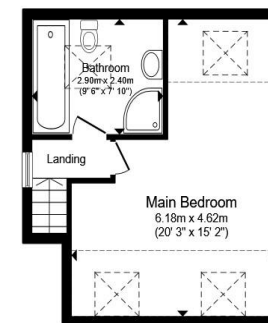
£375,000



Ground Floor



First Floor



Second Floor

Total floor area 156.2 m² (1,681 sq.ft.) approx

This floor plan is for illustrative purposes only. It is not drawn to scale. Any measurements, floor areas (including any total floor area), openings and orientation are approximate. No details are guaranteed, they cannot be relied upon for any purpose and they do not form part of any agreement. No liability is taken for any error, omission or misstatement. A party must rely upon its own inspection(s). Powered by www.propertybox.io



view this property online fox-and-sons.co.uk/Property/GOS113571



Property Ref:
GOS113571 - 0006

1. MONEY LAUNDERING REGULATIONS Intending purchasers will be asked to produce identification documentation at a later stage and we would ask for your co-operation in order that there is no delay in agreeing the sale. 2. These particulars do not constitute part or all of an offer or contract. 3. The measurements indicated are supplied for guidance only and as such must be considered incorrect. Potential buyers are advised to recheck measurements before committing to any expense. 4. We have not tested any apparatus, equipment, fixtures or services and it is in the buyers interest to check the working condition of any appliances. 5. Where an EPC, or a Home Report (Scotland only) is held for this property, it is available for inspection at the branch by appointment. If you require a printed version of a Home Report, you will need to pay a reasonable production charge reflecting printing and other costs. 6. We are not able to offer an opinion either written or verbal on the content of these reports and this must be obtained from your legal representative. 7. Whilst we take care in preparing these reports, a buyer should ensure that his/her legal representative confirms as soon as possible all matters relating to title including the extent and boundaries of the property and other important matters before exchange of contracts.

Fox & Sons is a trading name of Sequence (UK) Limited which is registered in England and Wales under company number 4268443, Registered Office is Cumbria House, 16-20 Hockliffe Street, Leighton Buzzard, Bedfordshire, LU7 1GN. VAT Registration Number is 500 2481 05.



023 9250 3733



Gosport@fox-and-sons.co.uk



10 High Street, GOSPORT, Hampshire, PO12 1BX



fox-and-sons.co.uk